

Technical Corner

7 March 2023

IHSG

Range: 6.765 – 6.845

---Indeks ditutup membentuk pola long black marubozu yang merupakan sinyal bearish continuation, stochastic netral dan MACD histogram divergence negatif.

Target pelemahan indeks pada level **6.765** kemudian 6.725 dengan *resist* di level 6.845 kemudian 6.885.

IHSG (6.807)

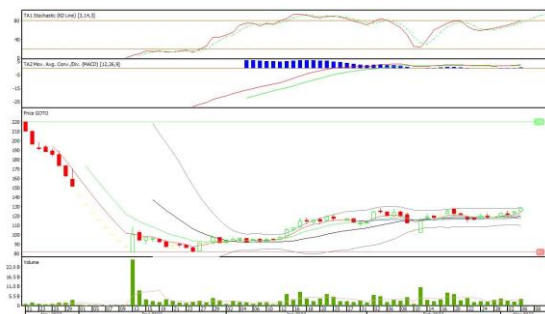


PT Go To Gojek Tokopedia, Tbk

Rekomendasi: Buy

---Harga ditutup di atas EMA5,10 dan membentuk pola long white marubozu yang merupakan sinyal bullish continuation, stochastic netral dan MACD histogram bullish crossover. **Target** kenaikan harga pada level **131** kemudian 134 dengan *support* di level 125 *cut loss* jika break 122.

GOTO (128)



Technical Corner

7 March 2023

PT H.M Sampoerna, Tbk

Rekomendasi: Buy

---Harga ditutup di atas EMA5,10 dan membentuk pola doji yang merupakan sinyal indecision, stochastic konsisten overbought dan MACD histogram convergence positif. **Target** kenaikan harga pada level **1.185** kemudian 1.200 dengan *support* di level 1.155 *cut loss* jika break 1.140.

HMSP (1.170)



PT Surya Citra Media, Tbk

Rekomendasi: Buy

---Harga ditutup membentuk pola long white marubozu yang merupakan sinyal bullish continuation, stochastic netral dan MACD histogram convergence negatif. **Target** kenaikan harga pada level **224** kemudian 230 dengan *support* di level 212 *cut loss* jika break 206.

SCMA (218)



Technical Corner

7 March 2023

PT Bank Syariah Indonesia, Tbk

Rekomendasi: Buy on Weakness

---Harga ditutup membentuk small bearish candle yang merupakan sinyal bearish continuation namun masih tertahan MA20, stochastic death cross dan MACD histogram divergence negatif.

Target harga beli pada level **1.545** dengan *resist* di level 1.595 kemudian 1.625.

BRIS (1.565)



PT INDO PREMIER SEKURITAS

Pacific Century Place 16th Floor SCBD Lot 10
 Jl. Jend. Sudirman Kav. 52-53
 Jakarta Selatan 12190 - Indonesia
 p +62 21 5088 7200

ANALYSTS CERTIFICATION

The views expressed in this research report accurately reflect the analyst's personal views about any and all of the subject securities or issuers; and no part of the research analyst's compensation was, is, or will be, directly or indirectly, related to the specific recommendations or views expressed in the report.

DISCLAIMERS

This research is based on information obtained from sources believed to be reliable, but we do not make any representation or warranty nor accept any responsibility or liability as to its accuracy, completeness or correctness. Opinions expressed are subject to change without notice. This document is prepared for general circulation. Any recommendations contained in this document does not have regard to the specific investment objectives, financial situation and the particular needs of any specific addressee. This document is not and should not be construed as an offer or a solicitation of an offer to purchase or subscribe or sell any securities. PT. Indo Premier Sekuritas or its affiliates may seek or will seek investment banking or other business relationships with the companies in this report.

Refer to Important disclosures on the last of this report