

Technical Corner

6 February 2023

IHSG

Range: 6.880 – 6.940

---Indeks ditutup membentuk pola small bearish candle namun masih di atas EMA5,10, stochastic golden cross dan MACD histogram convergence negatif.

Target kenaikan indeks pada level **6.940** kemudian 6.970 dengan *support* di level 6.880 kemudian 6.850.

IHSG (6.912)



PT Bank Central Asia, Tbk

Rekomendasi: Buy

---Harga ditutup di atas EMA5,10 dan membentuk pola white closing marubozu yang merupakan sinyal bullish continuation, stochastic golden cross dan MACD histogram divergence positif.

Target kenaikan harga pada level **8.800** kemudian 8.900 dengan *support* di level 8.600 *cut loss* jika break 8.500.

BBCA (8.700)



Technical Corner

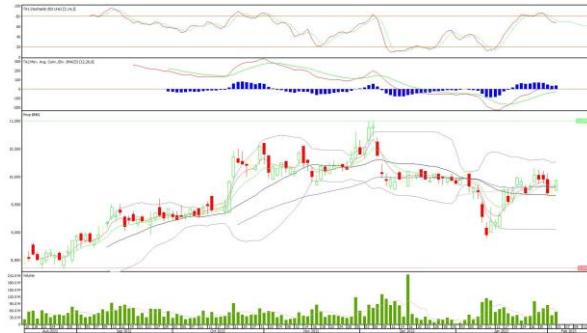
6 February 2023

PT Bank Mandiri, Tbk

Rekomendasi: Buy

---Harga ditutup di atas EMA5,10 dan membentuk pola white opening marubozu yang merupakan sinyal bullish continuation, stochastic netral dan MACD histogram divergence positif. **Target** kenaikan harga pada level **10.125** kemudian 10.225 dengan *support* di level 9.825 *cut loss* jika break 9.725.

BMRI (9.925)



PT Aneka Tambang, Tbk

Rekomendasi: Buy on Weakness

---Harga ditutup membentuk pola black opening marubozu yang merupakan sinyal bearish continuation namun masih di atas EMA10, stochastic death cross dan MACD histogram convergence positif. **Target** harga beli pada level **2.300** dengan *resist* di level 2.370 kemudian 2.390.

ANTM (2.330)



Technical Corner

6 February 2023

PT Bank Neo Commerce, Tbk

Rekomendasi: Buy on Weakness

---Harga ditutup membentuk pola black closing marubozu yang merupakan sinyal bearish continuation, stochastic netral dan MACD histogram divergence positif.

Target harga beli pada level **765** dengan *resist* di level 795 kemudian 815.

BBYB (775)



Premier ETF MSCI Indonesia Large Cap

Rekomendasi: Buy

---Harga ditutup di atas EMA5,10 dan membentuk pola white opening marubozu yang merupakan sinyal bullish continuation, stochastic golden cross dan MACD histogram divergence positif.

Target kenaikan harga pada level **281** kemudian 284 dengan *support* di level 275 *cut loss* jika break 272.

XIML (278)



Technical Corner

6 February 2023

Insight ETF FTSE LVF Index

Rekomendasi: Buy

---Harga ditutup di atas EMA5,10 dan membentuk pola white opening marubozu yang merupakan sinyal bullish continuation, stochastic golden cross dan MACD histogram divergence positif.

Target kenaikan harga pada level **130** kemudian 131 dengan *support* di level 128 *cut loss* jika break 127.

XILV (129)



Premier ETF FTSE Indonesia ESG

Rekomendasi: Buy

---Harga ditutup di atas EMA5,10 dan membentuk pola white opening marubozu yang merupakan sinyal bullish continuation, stochastic golden cross dan MACD histogram divergence positif.

Target kenaikan harga pada level **115** kemudian 116 dengan *support* di level 113 *cut loss* jika break 112.

XIFE (114)



Technical Corner

6 February 2023

PT INDO PREMIER SEKURITAS

Pacific Century Place 16th Floor SCBD Lot 10
Jl. Jend. Sudirman Kav. 52-53
Jakarta Selatan 12190 - Indonesia
p +62 21 5088 7200

ANALYSTS CERTIFICATION

The views expressed in this research report accurately reflect the analyst's personal views about any and all of the subject securities or issuers; and no part of the research analyst's compensation was, is, or will be, directly or indirectly, related to the specific recommendations or views expressed in the report.

DISCLAIMERS

This research is based on information obtained from sources believed to be reliable, but we do not make any representation or warranty nor accept any responsibility or liability as to its accuracy, completeness or correctness. Opinions expressed are subject to change without notice. This document is prepared for general circulation. Any recommendations contained in this document does not have regard to the specific investment objectives, financial situation and the particular needs of any specific addressee. This document is not and should not be construed as an offer or a solicitation of an offer to purchase or subscribe or sell any securities. PT. Indo Premier Sekuritas or its affiliates may seek or will seek investment banking or other business relationships with the companies in this report.

Refer to Important disclosures on the last of this report