

Technical Corner

21 October 2022

IHSG

Range: 6.935 – 7.025

---Indeks ditutup di atas EMA5,10 dan membentuk pola white opening marubozu yang merupakan sinyal bullish continuation, stochastic netral dan MACD histogram convergence negatif. **Target** kenaikan indeks pada level **7.025** kemudian 7.060 dengan *support* di level 6.935 kemudian 6.890.

IHSG (6.981)



PT Vale Indonesia, Tbk

Rekomendasi: Buy

---Harga ditutup di atas EMA5,10 dan membentuk pola white closing marubozu yang merupakan sinyal bullish continuation, stochastic golden cross dan MACD histogram convergence negatif. **Target** kenaikan harga pada level **4.050** kemudian 4.100 dengan *support* di level 3.950 *cut loss* jika break 3.900.

ADRO (4.000)



Technical Corner

21 October 2022

PT Bank Negara Indonesia, Tbk

Rekomendasi: Buy

---Harga ditutup di atas EMA5,10 dan membentuk pola white opening marubozu yang merupakan sinyal bullish continuation, stochastic netral dan MACD histogram convergence negatif. **Target** kenaikan harga pada level **9.100** kemudian 9.200 dengan *support* di level 8.900 *cut loss* jika break 8.800.

BBNI (9.000)



PT Perusahaan Gas Negara, Tbk

Rekomendasi: Buy

---Harga ditutup di atas EMA5,10 dan membentuk pola small bullish candle, stochastic memasuki zona netral dan MACD histogram convergence negatif. **Target** kenaikan harga pada level **1.860** kemudian 1.885 dengan *support* di level 1.810 *cut loss* jika break 1.785.

PGAS (1.835)



Technical Corner

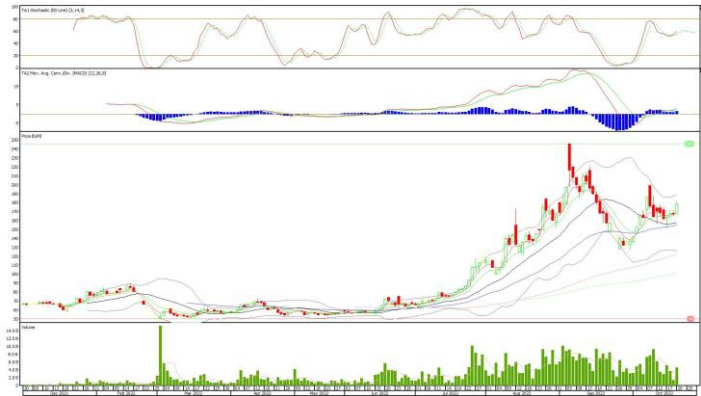
21 October 2022

PT Bumi Resources, Tbk

Rekomendasi: Buy

---Harga ditutup membentuk pola doji yang merupakan sinyal indecision, stochastic memasuki zona netral dan MACD histogram divergence negatif. **Target** kenaikan harga pada level **182** kemudian 186 dengan *support* di level 174 *cut loss* jika break 170.

BUMI (178)



Premier ETF FTSE Indonesia ESG

Rekomendasi: Buy

---Harga ditutup di atas EMA5,10 dan membentuk pola long white marubozu yang merupakan sinyal bullish continuation, stochastic netral dan MACD histogram convergence negatif. **Target** kenaikan harga pada level **118** kemudian 119 dengan *support* di level 116 *cut loss* jika break 115.

XIFE (117)



Technical Corner

21 October 2022

Premier ETF SMinfra18

Rekomendasi: Buy

---Harga ditutup di atas EMA5,10 dan membentuk pola long white marubozu yang merupakan sinyal bullish continuation, stochastic netral dan MACD histogram convergence negatif. **Target** kenaikan harga pada level **374** kemudian 379 dengan *support* di level 364 *cut loss* jika break 359.

XISI (369)



ETF MNC36 Likuid

Rekomendasi: Buy

---Harga ditutup di atas EMA5,10 dan membentuk pola white closing marubozu yang merupakan sinyal bullish continuation, stochastic netral dan MACD histogram convergence negatif. **Target** kenaikan harga pada level **504** kemudian 508 dengan *support* di level 496 *cut loss* jika break 492.

XMTS (500)



Technical Corner

21 October 2022

PT INDO PREMIER SEKURITAS

Pacific Century Place 16th Floor SCBD Lot 10
Jl. Jend. Sudirman Kav. 52-53
Jakarta Selatan 12190 - Indonesia
p +62 21 5088 7200

ANALYSTS CERTIFICATION

The views expressed in this research report accurately reflect the analyst's personal views about any and all of the subject securities or issuers; and no part of the research analyst's compensation was, is, or will be, directly or indirectly, related to the specific recommendations or views expressed in the report.

DISCLAIMERS

This research is based on information obtained from sources believed to be reliable, but we do not make any representation or warranty nor accept any responsibility or liability as to its accuracy, completeness or correctness. Opinions expressed are subject to change without notice. This document is prepared for general circulation. Any recommendations contained in this document does not have regard to the specific investment objectives, financial situation and the particular needs of any specific addressee. This document is not and should not be construed as an offer or a solicitation of an offer to purchase or subscribe or sell any securities. PT. Indo Premier Sekuritas or its affiliates may seek or will seek investment banking or other business relationships with the companies in this report.

Refer to Important disclosures on the last of this report