

Technical Corner

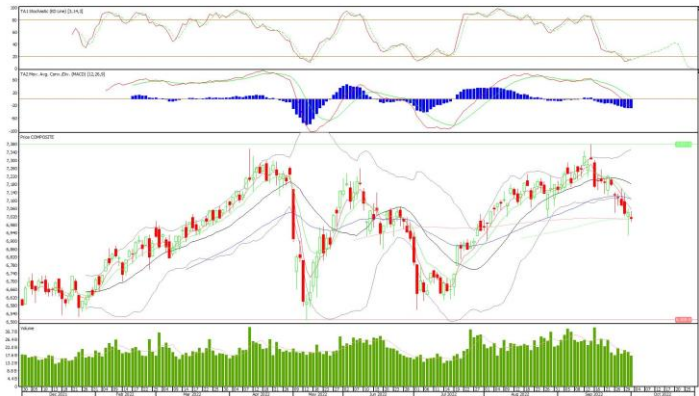
4 October 2022

IHSG

Range: 6.980 – 7.040

---Indeks ditutup membentuk pola small bearish candle, stochastic golden cross dan MACD histogram convergence negatif. **Target** kenaikan indeks pada level **7.040** kemudian 7.070 dengan *support* di level 6.980 kemudian 6.950.

IHSG (7.010)



PT Adaro Minerals Indonesia, Tbk

Rekomendasi: Buy

---Harga ditutup di atas EMA5,10 dan membentuk pola small bullish candle, stochastic netral dan MACD bullish crossover. **Target** kenaikan harga pada level **1.855** kemudian 1.885 dengan *support* di level 1.795 *cut loss* jika break 1.765.

ADMR (1.825)



Technical Corner

4 October 2022

PT Bank Rakyat Indonesia, Tbk

Rekomendasi: Buy

---Harga ditutup di atas EMA5,10 dan membentuk pola long white marubozu yang merupakan sinyal bullish continuation, stochastic netral dan MACD histogram convergence negatif. **Target** kenaikan harga pada level **4.570** kemudian 4.610 dengan *support* di level 4.490 *cut loss* jika break 4.450.

BBRI (4.530)

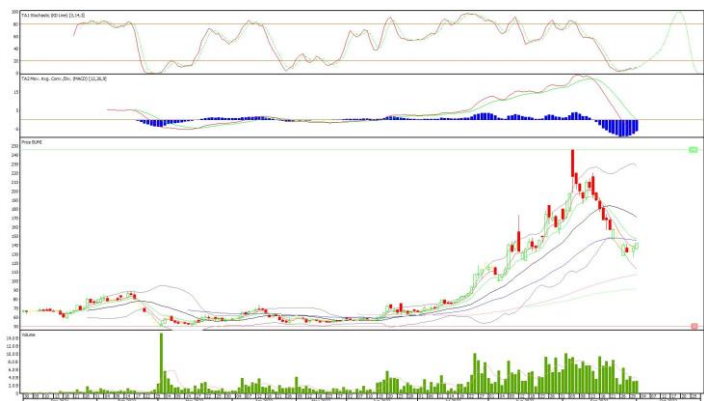


PT Bumi Resources, Tbk

Rekomendasi: Buy

---Harga ditutup di atas EMA5 dan membentuk pola white closing marubozu yang merupakan sinyal bullish continuation, stochastic oversold dan MACD histogram convergence negatif. **Target** kenaikan harga pada level **145** kemudian 148 dengan *support* di level 139 *cut loss* jika break 136.

BUMI (142)



Technical Corner

4 October 2022

PT Aneka Tambang, Tbk

Rekomendasi: Buy on Weakness

---Harga ditutup membentuk pola small bearish candle, stochastic netral dan MACD histogram divergence negatif.
Target harga beli pada level **1.870** dengan *resist* di level 1.920 kemudian 1.940.

ANTM (1.890)



Premier ETF LQ-45

Rekomendasi: Buy on Weakness

---Harga ditutup membentuk pola small bearish candle, stochastic golden cross dan MACD histogram divergence negatif.
Target harga beli pada level **1.093** dengan *resist* di level 1.108 kemudian 1.118.

R-LQ45X (1.098)



Technical Corner

4 October 2022

Premier ETF IDX 30

Rekomendasi: Buy on Weakness

---Harga ditutup membentuk pola small bearish candle, stochastic netral dan MACD histogram divergence positif. **Target** harga beli pada level **577** dengan *resist* di level 585 kemudian 590.

XIIT (580)



Pinnacle Enhanced Liquid ETF

Rekomendasi: Buy on Weakness

---Harga ditutup membentuk pola long black marubozu yang merupakan sinyal bearish continuation, stochastic golden cros dan MACD histogram divergence negatif. **Target** harga beli pada level **520** dengan *resist* di level 527 kemudian 531.

XPLQ (523)



Technical Corner

4 October 2022

PT INDO PREMIER SEKURITAS

Pacific Century Place 16th Floor SCBD Lot 10
Jl. Jend. Sudirman Kav. 52-53
Jakarta Selatan 12190 - Indonesia
p +62 21 5088 7200

ANALYSTS CERTIFICATION

The views expressed in this research report accurately reflect the analyst's personal views about any and all of the subject securities or issuers; and no part of the research analyst's compensation was, is, or will be, directly or indirectly, related to the specific recommendations or views expressed in the report.

DISCLAIMERS

This research is based on information obtained from sources believed to be reliable, but we do not make any representation or warranty nor accept any responsibility or liability as to its accuracy, completeness or correctness. Opinions expressed are subject to change without notice. This document is prepared for general circulation. Any recommendations contained in this document does not have regard to the specific investment objectives, financial situation and the particular needs of any specific addressee. This document is not and should not be construed as an offer or a solicitation of an offer to purchase or subscribe or sell any securities. PT. Indo Premier Sekuritas or its affiliates may seek or will seek investment banking or other business relationships with the companies in this report.

Refer to Important disclosures on the last of this report