

# Technical Corner

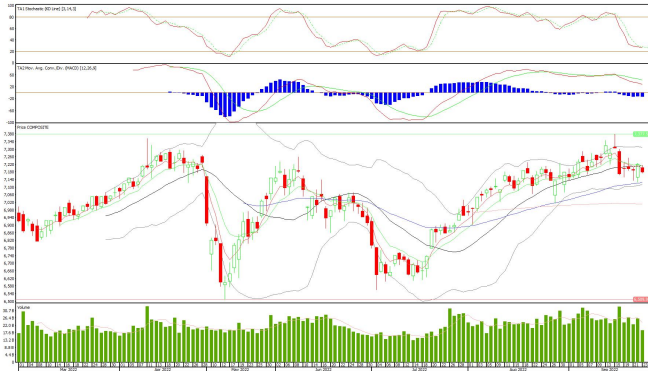
26 September 2022

## IHSG

**Range: 7.150 – 7.210**

---Indeks ditutup membentuk pola small bearish candle, stochastic netral dan MACD histogram divergence negatif.  
**Target** pelemahan indeks pada level **7.150** kemudian 7.120 dengan *resist* di level 7.210 kemudian 7.240.

## IHSG (7.179)



## PT Bank Syariah Indonesia, Tbk

**Rekomendasi: Buy**

---Harga ditutup di atas EMA5,10 dan membentuk pola long white marubozu yang merupakan sinyal bullish continuation, stochastic golden cross dan MACD histogram divergence positif.  
**Target** kenaikan harga pada level **1.610** kemudian 1.645 dengan *support* di level 1.540 *cut loss* jika break 1.505.

## BRIS (1.575)



# Technical Corner

26 September 2022

## PT Indosat, Tbk

**Rekomendasi: Buy**

---Harga ditutup di atas EMA5,10 dan membentuk pola long white marubozu yang merupakan sinyal bullish continuation, stochastic golden cross dan MACD histogram convergence negatif.

**Target** kenaikan harga pada level **7.450** kemudian 7.550 dengan *support* di level 7.250 *cut loss* jika break 7.150.

## ISAT (7.350)



## PT Perusahaan Gas Negara, Tbk

**Rekomendasi: Buy on Weakness**

---Harga ditutup membentuk pola long black marubozu yang merupakan sinyal bearish continuation, stochastic netral and MACD histogram divergence negatif.

**Target** harga beli pada level **1.765** dengan *resist* di level 1.820 kemudian 1.860.

## PGAS (1.780)



# Technical Corner

26 September 2022

## PT Telkom Indonesia, Tbk

**Rekomendasi: Buy on Weakness**

---Harga ditutup membentuk pola small bearish candle, stochastic oversold dan MACD histogram divergence negatif. **Target** harga beli pada level **4.350** dengan *resist* di level 4.450 kemudian 4.510.

## TLKM (4.380)

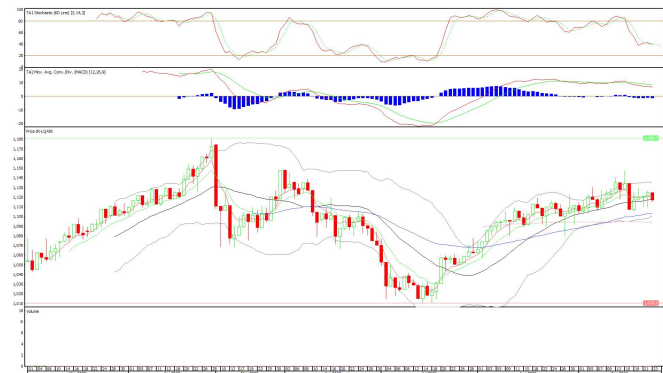


## Premier ETF LQ-45

**Rekomendasi: Buy on Weakness**

---Harga ditutup membentuk pola black opening marubozu yang merupakan sinyal bearish continuation, stochastic death cross dan MACD histogram divergence negatif. **Target** harga beli pada level **1.110** dengan *resist* di level 1.125 kemudian 1.133.

## R-LQ45X (1.117)



# Technical Corner

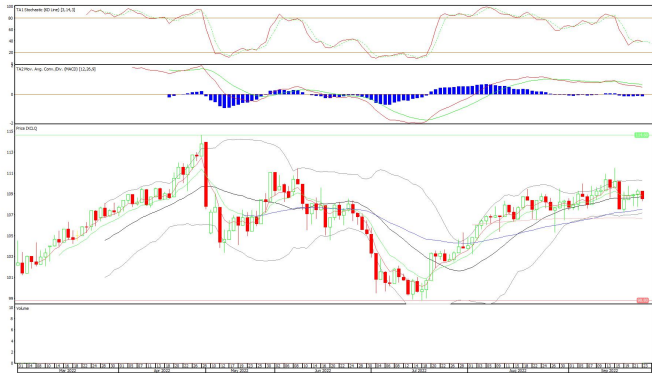
26 September 2022

## Cipta ETF Index LQ45

**Rekomendasi: Buy on Weakness**

---Harga ditutup membentuk pola black opening marubozu yang merupakan sinyal bearish continuation, stochastic death cross dan MACD histogram divergence negatif. **Target** harga beli pada level **108** dengan *resist* di level 110 kemudian 111.

## XCLQ (109)

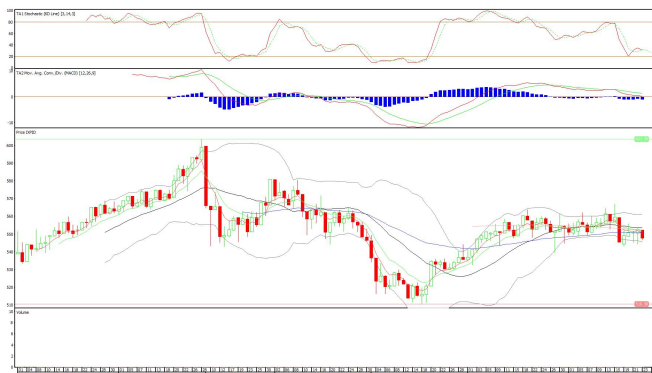


## Pinnacle IDX30 ETF

**Rekomendasi: Buy on Weakness**

---Harga ditutup membentuk pola black opening marubozu yang merupakan sinyal bearish continuation, stochastic death cross dan MACD histogram divergence negatif. **Target** harga beli pada level **545** dengan *resist* di level 553 kemudian 558.

## XPID (548)



# Technical Corner

26 September 2022

## **PT INDO PREMIER SEKURITAS**

Pacific Century Place 16th Floor SCBD Lot 10

Jl. Jend. Sudirman Kav. 52-53

Jakarta Selatan 12190 - Indonesia

p +62 21 5088 7200

### **ANALYSTS CERTIFICATION**

The views expressed in this research report accurately reflect the analyst's personal views about any and all of the subject securities or issuers; and no part of the research analyst's compensation was, is, or will be, directly or indirectly, related to the specific recommendations or views expressed in the report.

### **DISCLAIMERS**

This research is based on information obtained from sources believed to be reliable, but we do not make any representation or warranty nor accept any responsibility or liability as to its accuracy, completeness or correctness. Opinions expressed are subject to change without notice. This document is prepared for general circulation. Any recommendations contained in this document does not have regard to the specific investment objectives, financial situation and the particular needs of any specific addressee. This document is not and should not be construed as an offer or a solicitation of an offer to purchase or subscribe or sell any securities. PT. Indo Premier Sekuritas or its affiliates may seek or will seek investment banking or other business relationships with the companies in this report.

**Refer to Important disclosures on the last of this report**