

Technical Corner

20 January 2021

IHSG

Range: 6.240 – 6.400

---Indeks ditutup di bawah EMA5 dan membentuk pola long black marubozu yang merupakan sinyal bearish continuation, stochastic overbought dan MACD histogram convergence positif. **Target** pelemahan indeks pada level 6.240 kemudian 6.160 dengan *resist* di level 6.400 dan 6.480.

IHSG (6.322)



PT AKR Corporindo, Tbk

Rekomendasi: Buy

---Harga tertahan EMA50 dan membentuk pola long white marubozu yang merupakan sinyal bullish continuation, stochastic netral dan MACD histogram convergence negatif. **Target** kenaikan harga pada level 3.320 kemudian 3.380 dengan *support* di level 3.200, *cut loss* jika *break* 3.140.

AKRA (3.260)



Technical Corner

20 January 2021

PT XL Axiata, Tbk

Rekomendasi: Buy

--- Harga ditutup di atas EMA5 dan membentuk pola long white marubozu yang merupakan sinyal bullish continuation, stochastic oversold dan MACD histogram convergence negatif. **Target** kenaikan harga pada level **2.750** kemudian 2.870 dengan *support* di level 2.510, *cut loss* jika *break* 2.390.

EXCL (2.630)



PT Indah Kiat Pulp & Paper, Tbk

Rekomendasi: Buy

---Harga ditutup di atas EMA10 dan membentuk pola long white marubozu yang merupakan sinyal bullish continuation, stochastic netral dan MACD histogram convergence positif. **Target** kenaikan harga pada level **13.150** kemudian 13.525 dengan *support* di level 12.400, *cut loss* jika *break* 12.025.

INKP (12.775)



Technical Corner

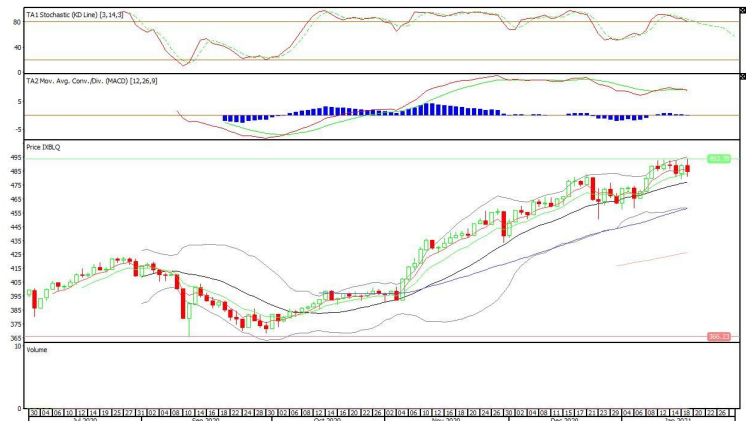
20 January 2021

Batavia Smart Liquid ETF

Rekomendasi: Sell

--- Harga ditutup di bawah EMA5 dan membentuk pola long black marubozu yang merupakan sinyal bearish continuation, stochastic overbought dan MACD histogram divergence negatif. **Target** pelemahan harga pada level **479** kemudian 474 dengan *resist* di level 489, kemudian 494.

XBLQ (484)

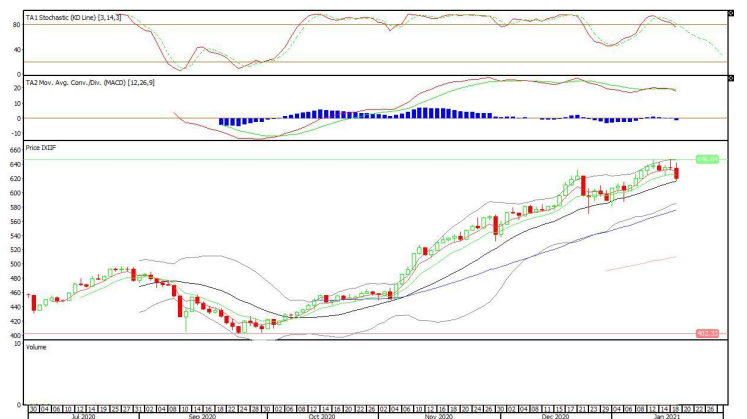


XIIF (620)

Premier ETF Indonesia Financial

Rekomendasi: Sell

--- Harga ditutup di bawah EMA5,10 dan membentuk pola long black marubozu yang merupakan sinyal bearish continuation, stochastic memasuki zona netral dan MACD histogram divergence negatif. **Target** pelemahan harga pada level **606** kemudian 592 dengan *resist* di level 634, kemudian 648.



Technical Corner

20 January 2021

XPES (417)

Pinnacle Enhanced Sharia ETF

Rekomendasi: Sell

--- Harga ditutup di bawah EMA5,10 dan membentuk pola long black marubozu yang merupakan sinyal bearish continuation, stochastic memasuki zona netral dan MACD divergence negatif. **Target** pelemahan harga pada level **411** kemudian 405 dengan *resist* di level 423, kemudian 429.



PT INDO PREMIER SEKURITAS
 Pacific Century Place 16th Floor SCBD Lot 10
 Jl. Jend. Sudirman Kav. 52-53
 Jakarta Selatan 12190 - Indonesia
 p +62 21 5088 7200

ANALYSTS CERTIFICATION

The views expressed in this research report accurately reflect the analyst's personal views about any and all of the subject securities or issuers; and no part of the research analyst's compensation was, is, or will be, directly or indirectly, related to the specific recommendations or views expressed in the report.

DISCLAIMERS

This research is based on information obtained from sources believed to be reliable, but we do not make any representation or warranty nor accept any responsibility or liability as to its accuracy, completeness or correctness. Opinions expressed are subject to change without notice. This document is prepared for general circulation. Any recommendations contained in this document does not have regard to the specific investment objectives, financial situation and the particular needs of any specific addressee. This document is not and should not be construed as an offer or a solicitation of an offer to purchase or subscribe or sell any securities. PT. Indo Premier Sekuritas or its affiliates may seek or will seek investment banking or other business relationships with the companies in this report.

Refer to Important disclosures on the last of this report