

Technical Corner

18 January 2021

IHSG

Range: 6.295 – 6.455

---Indeks ditutup di bawah EMA5 dan membentuk pola long black marubozu yang merupakan sinyal bearish continuation, stochastic overbought dan MACD histogram convergence positif. **Target** pelemahan indeks pada level **6.295** kemudian 6.215 dengan *resist* di level 6.455 dan 6.535.

IHSG (6.373)



PT Ramayana Lestari Sentosa, Tbk

Rekomendasi: Buy

---Harga ditutup di atas EMA5,10 dan membentuk pola long white marubozu yang merupakan sinyal continuation, stochastic netral dan MACD histogram convergence negatif. **Target** kenaikan harga pada level **850** kemudian 875 dengan *support* di level 800, *cut loss* jika *break* 775.

RALS (825)



Technical Corner

18 January 2021

PT Waskita Beton Precast, Tbk

Rekomendasi: Buy

--- Harga ditutup di atas EMA5,10 dan membentuk pola long white marubozu yang merupakan sinyal bullish continuation, stochastic konsisten overbought dan MACD histogram divergence positif. **Target** kenaikan harga pada level **336** kemudian 348 dengan *support* di level 312, *cut loss* jika *break* 300.

WSBP (324)



PT Wijaya Karya Beton, Tbk

Rekomendasi: Buy

---Harga ditutup di atas EMA5,10 dan membentuk pola long white marubozu yang merupakan sinyal bullish continuation, stochastic di zona netral dan MACD histogram convergence negatif. **Target** kenaikan harga pada level **444** kemudian 460 dengan *support* di level 412, *cut loss* jika *break* 398.

WTON (428)



Technical Corner

18 January 2021

Premier ETF LQ-45

Rekomendasi: Sell

--- Harga ditutup di bawah EMA5 dan membentuk pola bearish engulfing yang merupakan sinyal bearish reversal, stochastic overbought dan MACD histogram convergence positif. **Target** pelemahan harga pada level **1.015** kemudian 1.000 dengan *resist* di level 1.045, kemudian 1.060.

R-LQ45X (1.030)



Premier ETF Indonesia Consumer

Rekomendasi: Sell

--- Harga ditutup membentuk pola long black marubozu yang merupakan sinyal bearish continuation, stochastic netral dan MACD histogram convergence positif. **Target** pelemahan harga pada level **1.052** kemudian 1.040 dengan *resist* di level 1.076, kemudian 1.088.

XIIC (1.064)



Technical Corner

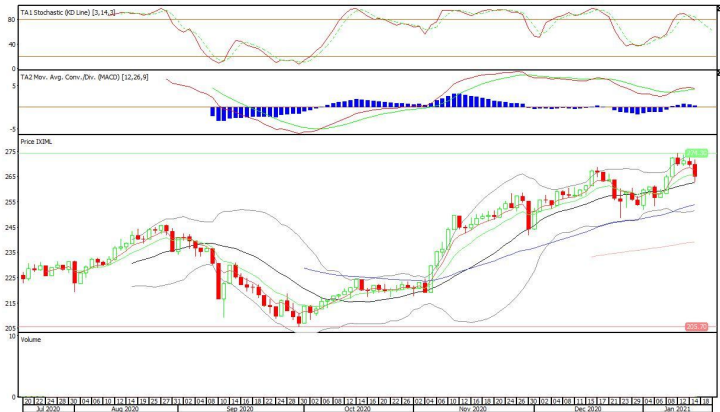
18 January 2021

Premier ETF MSCI Indonesia Large Cap

Rekomendasi: Sell

--- Harga ditutup dibawah EMA5,10 membentuk pola long black marubozu yang merupakan sinyal bearish continuation, stochastic netral dan MACD convergence positif. **Target** pelemahan harga pada level **260** kemudian 255 dengan *resist* di level 270, kemudian 275.

XIML (265)



PT INDO PREMIER SEKURITAS

Pacific Century Place 16th Floor SCBD Lot 10
 Jl. Jend. Sudirman Kav. 52-53
 Jakarta Selatan 12190 - Indonesia
 p +62 21 5088 7200

ANALYSTS CERTIFICATION

The views expressed in this research report accurately reflect the analyst's personal views about any and all of the subject securities or issuers; and no part of the research analyst's compensation was, is, or will be, directly or indirectly, related to the specific recommendations or views expressed in the report.

DISCLAIMERS

This research is based on information obtained from sources believed to be reliable, but we do not make any representation or warranty nor accept any responsibility or liability as to its accuracy, completeness or correctness. Opinions expressed are subject to change without notice. This document is prepared for general circulation. Any recommendations contained in this document does not have regard to the specific investment objectives, financial situation and the particular needs of any specific addressee. This document is not and should not be construed as an offer or a solicitation of an offer to purchase or subscribe or sell any securities. PT. Indo Premier Sekuritas or its affiliates may seek or will seek investment banking or other business relationships with the companies in this report.

Refer to Important disclosures on the last of this report