

# Technical Corner

20 November 2020

## IHSG

**Range: 5.545 – 5.645**

---Indeks ditutup di atas EMA5,10 dan membentuk pola white opening marubozu yang merupakan sinyal bullish continuation, stochastic overbought dan MACD histogram convergence positif. **Target** kenaikan indeks pada level **5.645** kemudian 5.695 dengan *support* di level 5.545 dan 5.495.

## IHSG (5.594)



## PT Bank Negara Indonesia, Tbk

**Rekomendasi: Buy**

---Harga ditutup di atas EMA5,10 dan membentuk pola long white marubozu yang merupakan sinyal bullish continuation, stochastic overbought dan MACD histogram convergence positif. **Target** kenaikan harga pada level **5.850** kemudian 5.950 dengan *support* di level 5.650 *cut loss* jika *break* 5.550.

## BBNI (5.750)



# Technical Corner

20 November 2020

## PT WIKA Bangunan Gedung, Tbk

**Rekomendasi: Buy**

--- Harga ditutup di atas EMA5,10 dan membentuk pola long white marubozu yang merupakan sinyal bullish continuation, stochastic netral dan MACD histogram divergence positif. **Target** kenaikan harga pada level **206** kemudian 210 dengan *support* di level 198 *cut loss* jika *break* 194.

## WEGE (202)



## WIKY (1.470)

## PT Wijaya Karya, Tbk

**Rekomendasi: Buy**

---Harga ditutup di atas EMA5,10 dan membentuk pola white long marubozu, stochastic netral dan MACD histogram convergence positif. **Target** kenaikan harga pada level **1.495** kemudian 1.520 dengan *support* di level 1.445 *cut loss* jika *break* 1.420.



# Technical Corner

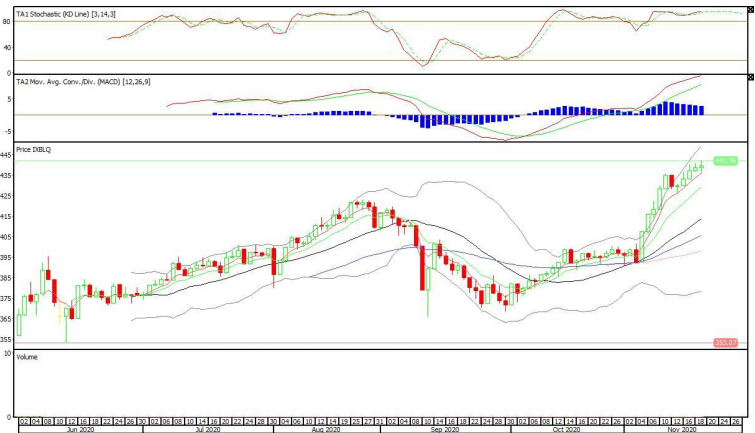
20 November 2020

## Batavia Smart Liquid ETF

**Rekomendasi: Buy**

--- Harga ditutup di atas EMA5,10 membentuk pola spinning top merupakan sinyal indecision, stochastic overbought dan MACD histogram convergence positif. **Target** kenaikan harga pada level **443** kemudian 446 dengan *support* di level 437 *cut loss* jika *break* 434.

## XBLQ (440)

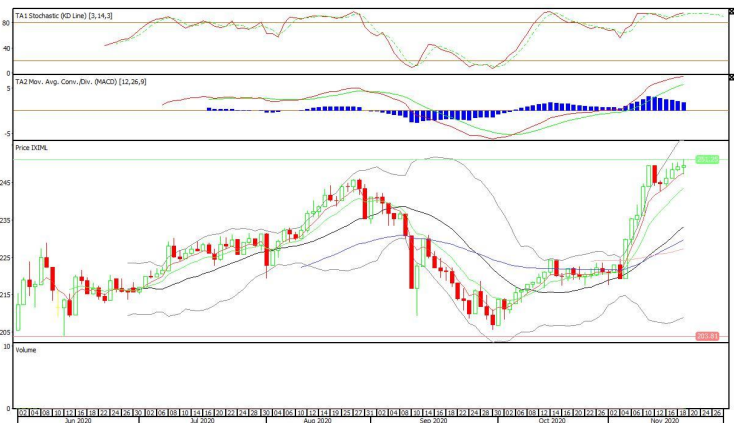


## XIML (250)

## Premier ETF MSCI Indonesia Large Cap

**Rekomendasi: Buy**

--- Harga ditutup di atas EMA5,10, dan membentuk pola spinning top yang merupakan sinyal indecision, stochastic overbought dan MACD histogram convergence positif. **Target** kenaikan harga pada level **252** kemudian 254 dengan *support* di level 248 *cut loss* jika *break* 246.



# Technical Corner

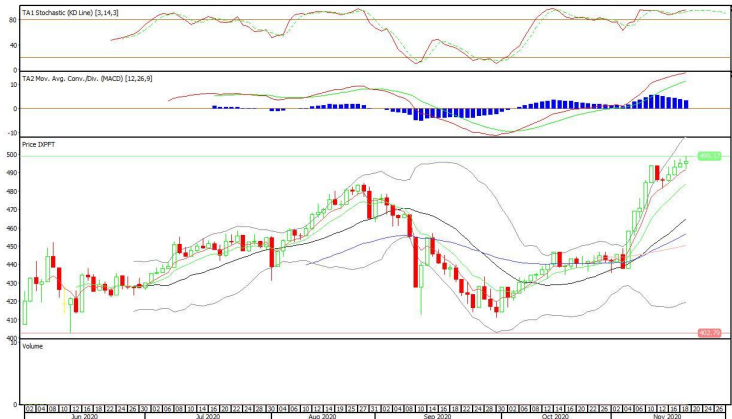
20 November 2020

## Pinnacle FTSE Indonesia ETF

### Rekomendasi: Buy

--- Harga ditutup di atas EMA5,10 dan membentuk pola spinning top yang merupakan sinyal indecision, stochastic overbought dan MACD histogram convergence positif. **Target** kenaikan harga pada level **500** kemudian 504 dengan *support* di level 492 *cut loss* jika *break* 488.

## XPFT (496)



**PT INDO PREMIER SEKURITAS**  
 Pacific Century Place 16th Floor SCBD Lot 10  
 Jl. Jend. Sudirman Kav. 52-53  
 Jakarta Selatan 12190 - Indonesia  
 p +62 21 5088 7200

### ANALYSTS CERTIFICATION

The views expressed in this research report accurately reflect the analyst's personal views about any and all of the subject securities or issuers; and no part of the research analyst's compensation was, is, or will be, directly or indirectly, related to the specific recommendations or views expressed in the report.

### DISCLAIMERS

This research is based on information obtained from sources believed to be reliable, but we do not make any representation or warranty nor accept any responsibility or liability as to its accuracy, completeness or correctness. Opinions expressed are subject to change without notice. This document is prepared for general circulation. Any recommendations contained in this document does not have regard to the specific investment objectives, financial situation and the particular needs of any specific addressee. This document is not and should not be construed as an offer or a solicitation of an offer to purchase or subscribe or sell any securities. PT. Indo Premier Sekuritas or its affiliates may seek or will seek investment banking or other business relationships with the companies in this report.

**Refer to Important disclosures on the last of this report**