

# Technical Corner

26 October 2020

## IHSG

Range: 5.080 – 5.140

---Indeks ditutup di atas EMA5,10 dan membentuk pola doji yang merupakan sinyal indecision, stochastic netral dan MACD histogram convergence positif.

**Target** kenaikan indeks pada level **5.140** kemudian 5.170 dengan support di level **5.080** dan 5.050.

## IHSG (5.112)



## PT BPD Jawa Barat dan Banten, Tbk

Rekomendasi: Buy

---Harga ditutup di atas EMA5 dan membentuk pola small bullish candle, stochastic netral dan MACD histogram convergence positif. **Target** kenaikan harga pada level **1.070** kemudian 1.090 dengan *support* di level 1.030 *cut loss* jika *break* 1.010.

## BJBR (1.050)



# Technical Corner

26 October 2020

## PT Bank Mandiri, Tbk

**Rekomendasi: Buy**

--- Harga ditutup di atas EMA50 dan membentuk pola small bullish candle, stochastic netral dan MACD histogram convergence positif. **Target** kenaikan harga pada level **5.650** kemudian 5.750 dengan *support* di level 5.450 *cut loss* jika *break* 5.375.

## BMRI (5.550)



## PT Wijaya Karya, Tbk

**Rekomendasi: Buy**

--- Harga ditutup di atas MA20 dan membentuk small bearish candle, stochastic netral dan MACD convergence positif. **Target** kenaikan harga pada level **1.220** kemudian 1.250 dengan *support* di level 1.160 *cut loss* jika *break* 1.140.

## WIKA (1.190)



# Technical Corner

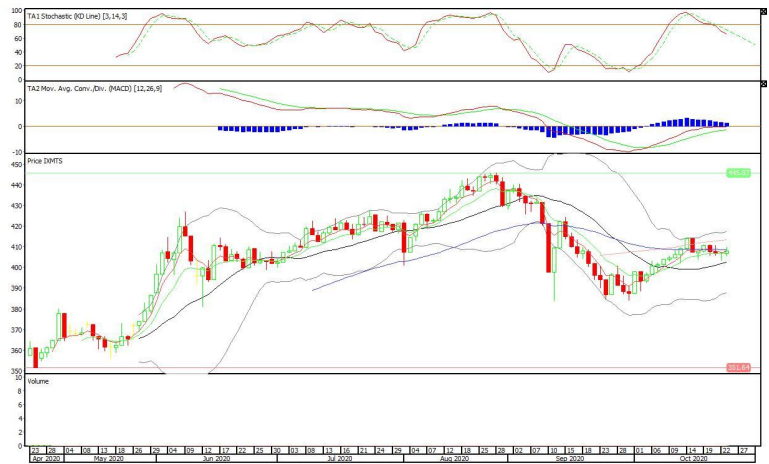
26 October 2020

## ETF MNC36 Likuid

**Rekomendasi: Buy**

--- Harga ditutup di atas EMA5,10 membentuk pola small bullish candle, stochastic netral dan MACD histogram convergence positif. **Target** kenaikan harga pada level **410** kemudian 412 dengan *support* di level 405 *cut loss* jika *break* 403.

## XMTS (408)



## XDIF (393)

## Danareksa ETF Indonesia Top 40

**Rekomendasi: Buy**

--- Harga ditutup di atas EMA5,10, dan membentuk pola small bullish candle, stochastic overbought dan MACD histogram convergence positif. **Target** kenaikan harga pada level **396** kemudian 399 dengan *support* di level 390 *cut loss* jika *break* 387.



# Technical Corner

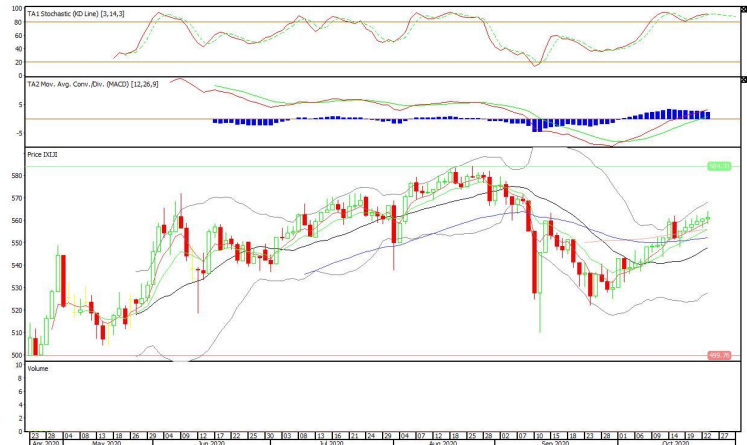
26 October 2020

## Syariah Premier ETF JII

### Rekomendasi: Buy

--- Harga ditutup di atas EMA10 dan membentuk pola small bullish candle, stochastic overbought dan MACD histogram convergence positif. **Target** kenaikan harga pada level **565** kemudian **569** dengan *support* di level **557** *cut loss* jika *break* 553.

## XIJI (561)



## PT INDO PREMIER SEKURITAS

Pacific Century Place 16th Floor SCBD Lot 10  
 Jl. Jend. Sudirman Kav. 52-53  
 Jakarta Selatan 12190 - Indonesia  
 p +62 21 5088 7200

### ANALYSTS CERTIFICATION

The views expressed in this research report accurately reflect the analyst's personal views about any and all of the subject securities or issuers; and no part of the research analyst's compensation was, is, or will be, directly or indirectly, related to the specific recommendations or views expressed in the report.

### DISCLAIMERS

This research is based on information obtained from sources believed to be reliable, but we do not make any representation or warranty nor accept any responsibility or liability as to its accuracy, completeness or correctness. Opinions expressed are subject to change without notice. This document is prepared for general circulation. Any recommendations contained in this document does not have regard to the specific investment objectives, financial situation and the particular needs of any specific addressee. This document is not and should not be construed as an offer or a solicitation of an offer to purchase or subscribe or sell any securities. PT. Indo Premier Sekuritas or its affiliates may seek or will seek investment banking or other business relationships with the companies in this report.

Refer to Important disclosures on the last of this report