

# Technical Corner

14 September 2020

## IHSG

**Range: 4.890– 5.150**

---Indeks ditutup di atas MA100 dan membentuk pola white closing marubozu yang merupakan sinyal bullish continuation, stochastic golden cross sedangkan MACD histogram divergence negatif. **Target** kenaikan indeks pada level **5.150** kemudian 5.275 dengan *support* di level 4.890 dan 4.740.

## IHSG (5.017)



## PT Bank Mandiri, Tbk

**Rekomendasi: Buy**

---Harga ditutup di atas MA100 dan membentuk pola white opening marubozu yang merupakan sinyal bullish continuation, stochastic oversold sedangkan MACD histogram divergence negatif. **Target** kenaikan harga pada level **5.775** kemudian 6.025 dengan *support* di level 5.200, *cut loss* jika *break* 4.950.

## BMRI (5.475)



# Technical Corner

14 September 2020

## PT Bank Rakyat Indonesia, Tbk

### Rekomendasi: Buy

--- Harga ditutup di atas MA100 dan membentuk pola long white marubozu yang merupakan sinyal bullish continuation, stochastic oversold sedangkan MACD histogram divergence negatif. **Target** kenaikan harga pada level **3.400** kemudian 3.550 dengan *support* 3.090, *cut loss* jika *break* 2.940.

## BBRI (3.250)



## PT Bank Tabungan Negara, Tbk

### Rekomendasi: Buy

---Harga ditutup di bawah lower band dan membentuk pola long white marubozu yang merupakan sinyal bullish continuation, stochastic oversold sedangkan MACD histogram divergence negatif. **Target** kenaikan harga pada level **1.400** kemudian 1.450 dengan *support* di level 1.260, *cut loss* jika *break* 1.180.

## BBTN (1.330)



# Technical Corner

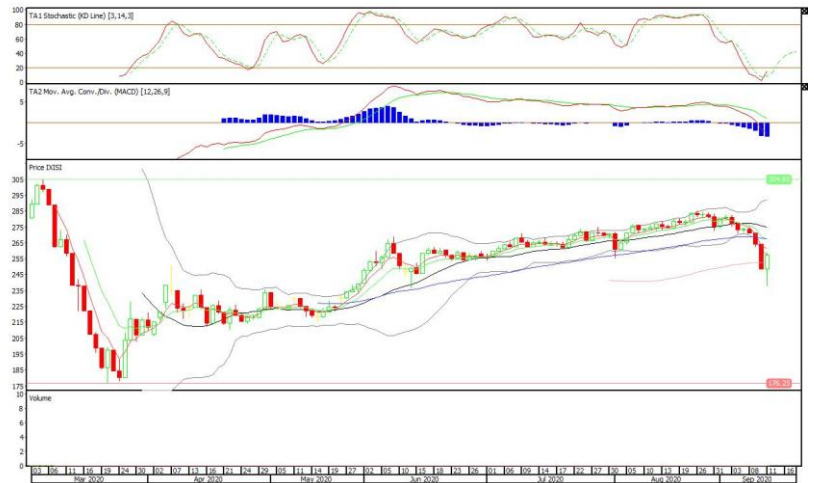
14 September 2020

## Premier ETF Sminfra18

### Rekomendasi: Buy

--- Harga ditutup di atas MA100 dan membentuk pola long white marubozu yang merupakan sinyal bullish continuation, stochastic golden cross sedangkan MACD histogram divergence negatif. **Target** kenaikan harga pada level 264 kemudian 271 dengan *support* di level 251, *cut loss* jika *break* 245.

## XISI (257)



## Premier ETF High Dividen 20

### Rekomendasi: Buy

--- Harga ditutup di atas MA100 dan membentuk pola long white marubozu yang merupakan sinyal bullish continuation, stochastic golden cross sedangkan MACD histogram divergence negatif. **Target** kenaikan harga pada level 405 kemudian 412 dengan *support* di level 385, *cut loss* jika *break* 379.

## XIHD (394)



# Technical Corner

14 September 2020

## XPDV (386)

### Pinnacle Core High Dividend ETF

#### Rekomendasi: Buy

--- Harga ditutup di atas MA100 dan membentuk pola long white marubozu yang merupakan sinyal bullish continuation, stochastic golden cross sedangkan MACD histogram divergence negatif. **Target** kenaikan harga pada level 395 kemudian 406 dengan *support* di level 376, *cut loss* jika *break* 369.



### PT INDO PREMIER SEKURITAS

Pacific Century Place 16th Floor SCBD Lot 10  
 Jl. Jend. Sudirman Kav. 52-53  
 Jakarta Selatan 12190 - Indonesia  
 p +62 21 5088 7200

#### ANALYSTS CERTIFICATION

The views expressed in this research report accurately reflect the analyst's personal views about any and all of the subject securities or issuers; and no part of the research analyst's compensation was, is, or will be, directly or indirectly, related to the specific recommendations or views expressed in the report.

#### DISCLAIMERS

This research is based on information obtained from sources believed to be reliable, but we do not make any representation or warranty nor accept any responsibility or liability as to its accuracy, completeness or correctness. Opinions expressed are subject to change without notice. This document is prepared for general circulation. Any recommendations contained in this document does not have regard to the specific investment objectives, financial situation and the particular needs of any specific addressee. This document is not and should not be construed as an offer or a solicitation of an offer to purchase or subscribe or sell any securities. PT. Indo Premier Sekuritas or its affiliates may seek or will seek investment banking or other business relationships with the companies in this report.

**Refer to Important disclosures on the last of this report**