

Technical Corner

10 August 2020

IHSG

Range: 5.105 – 5.185

---Indeks ditutup dengan membentuk pola candle long black marubozu yang merupakan sinyal bearish continuation, stochastic overbought dan MACD histogram convergence negatif. **Target** pelemahan indeks pada level **5.105** kemudian 5.065 dengan *resist* di level 5.185 dan 5.225.

IHSG (5.144)

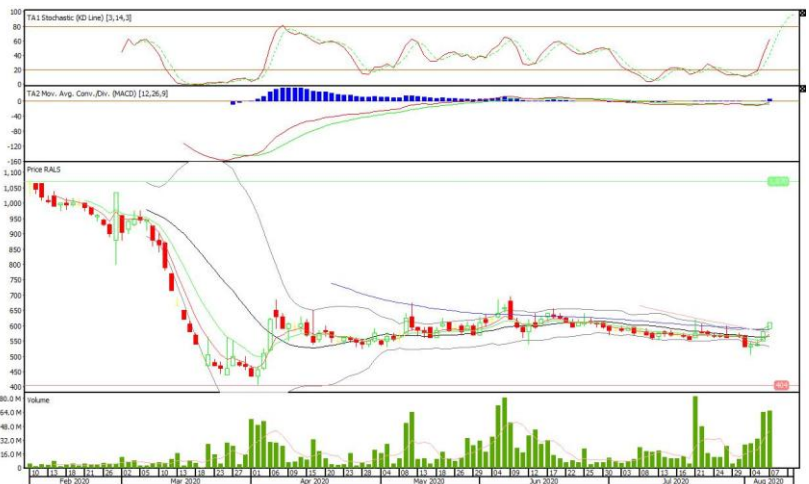


PT Ramayana Lestari Sentosa, Tbk

Rekomendasi: Buy

---Harga ditutup di atas upper band dan membentuk pola white marubozu yang merupakan sinyal bullish continuation, stochastic netral dan MACD divergence positif. **Target** kenaikan harga pada level **630** kemudian 645 dengan *support* di level 585, *cut loss* jika *break* 570.

RALS (610)



Technical Corner

10 August 2020

PT PP London Sumatra Indonesia, Tbk

Rekomendasi: Buy

--- Harga ditutup di atas EMA5,10 dan membentuk pola candle doji yang merupakan sinyal indecision, stochastic netral dan MACD histogram convergence positif. **Target** kenaikan harga pada level **1.010** kemudian 1.030 dengan *support* di level 970, *cut loss* jika *break* 955.

LSIP (995)



PT AKR Corporindo, Tbk

Rekomendasi: Buy on Weakness

---Harga ditutup tepat di EMA5 dan membentuk pola candle spinning top yang merupakan sinyal indecision, stochastic netral dan MACD histogram convergence positif. **Target** harga beli pada level 2.730 dengan *resist* di level 2.810 kemudian 2.850.

AKRA (2.770)



Technical Corner

10 August 2020

Premier ETF SMinfra18

Rekomendasi: SELL

---Harga ditutup dengan membentuk pola candle black opening marubozu yang merupakan sinyal bearish continuation, stochastic overbought, sedangkan MACD histogram divergence positif. **Target** pelemahan harga pada level **270** kemudian 263 dengan *resist* di level 277 dan 280.

XISI (273)



Premier ETF IDX High Dividen 20

Rekomendasi: SELL

--- Harga ditutup dengan membentuk pola candle black closing marubozu yang merupakan sinyal bearish continuation, stochastic overbought dan MACD histogram convergence negatif. **Target** pelemahan harga pada level **403** kemudian 399 dengan *resist* di level 413 dan 416.

XIHD (408)



Technical Corner

10 August 2020

Premier ETF Indonesia Consumer

Rekomendasi: SELL

--- Harga ditutup dengan membentuk pola candle long black marubozu yang merupakan sinyal bearish continuation, stochastic overbought dan MACD histogram convergence negatif. **Target** pelemahan harga pada level **927** kemudian 920 dengan *resist* di level 947 dan 955.

XIIC (935)



PT INDO PREMIER SEKURITAS

Pacific Century Place 16th Floor SCBD Lot 10
 Jl. Jend. Sudirman Kav. 52-53
 Jakarta Selatan 12190 - Indonesia
 p +62 21 5088 7200

ANALYSTS CERTIFICATION

The views expressed in this research report accurately reflect the analyst's personal views about any and all of the subject securities or issuers; and no part of the research analyst's compensation was, is, or will be, directly or indirectly, related to the specific recommendations or views expressed in the report.

DISCLAIMERS

This research is based on information obtained from sources believed to be reliable, but we do not make any representation or warranty nor accept any responsibility or liability as to its accuracy, completeness or correctness. Opinions expressed are subject to change without notice. This document is prepared for general circulation. Any recommendations contained in this document does not have regard to the specific investment objectives, financial situation and the particular needs of any specific addressee. This document is not and should not be construed as an offer or a solicitation of an offer to purchase or subscribe or sell any securities. PT. Indo Premier Sekuritas or its affiliates may seek or will seek investment banking or other business relationships with the companies in this report.

Refer to Important disclosures on the last of this report