

# Technical Corner

8 April 2020

**IHSG**

**Range: 4.670 – 4.890**

---Indeks ditutup dengan membentuk pola spinning top yang merupakan sinyal indecision, stochastic overbought dan MACD histogram divergence positif. Target pelemahan indeks pada level 4.670 kemudian 4.560 dengan *resist* di level 4.890 dan 5.000.

**IHSG (4.779)**



**Mitra Adiperkasa**

**Rekomendasi: Buy**

---Candle ditutup di atas MA20 dan membentuk pola small bullish candle, stochastic netral dan MACD histogram divergence positif. Target kenaikan harga pada level 635 kemudian 670 dengan *support* di level 565, *cut loss* jika *break* 540.

**MAPI (605)**



**Bank Tabungan Pensiunan Nasional Syariah**

**Rekomendasi: Buy**

---Candle ditutup di atas MA20 dan membentuk pola white marubozu yang merupakan sinyal bullish continuation, stochastic netral dan MACD histogram divergence positif. Target kenaikan harga pada level 3.120 kemudian 3.390 dengan support di level 2.460, cut loss jika break 2.130.

**BTPS (2.780)**



**Astra International**

**Rekomendasi: Buy**

---Candle ditutup di atas EMA5,10 dan membentuk pola doji yang merupakan sinyal indecision, stochastic netral dan MACD histogram divergence positif. Target kenaikan harga pada level 4.290 kemudian 4.490 dengan support di level 3.900, cut loss jika break 3.720.

**ASII (4.060)**

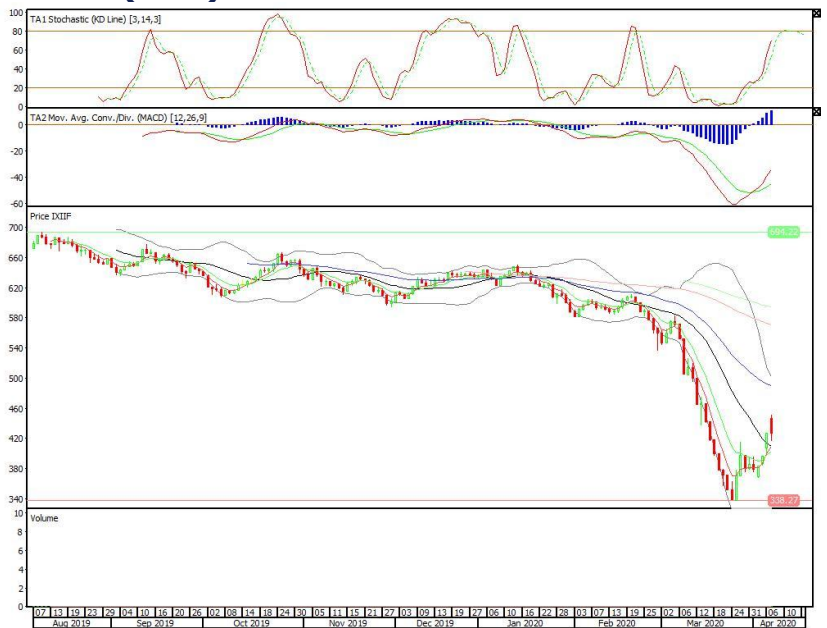


**Premier ETF Indonesia Financial**

**Rekomendasi: Buy on Weakness**

---Candle ditutup di bawah EMA50 dengan membentuk pola long black marubozu yang merupakan sinyal bearish continuation, stochastic netral, MACD histogram divergence positif. Target harga beli pada level 407 dengan *resist* di level 446 kemudian 466.

**XIIF (427)**



**Danareksa ETF Indonesia Top 40**

**Rekomendasi: Buy on Weakness**

---Candle ditutup di bawah EMA50 dengan membentuk pola long black marubozu yang merupakan sinyal bearish continuation, stochastic overbought, MACD histogram divergence positif. Target harga beli pada level 337 dengan *resist* di level 370 kemudian 384.

**XDIF (354)**

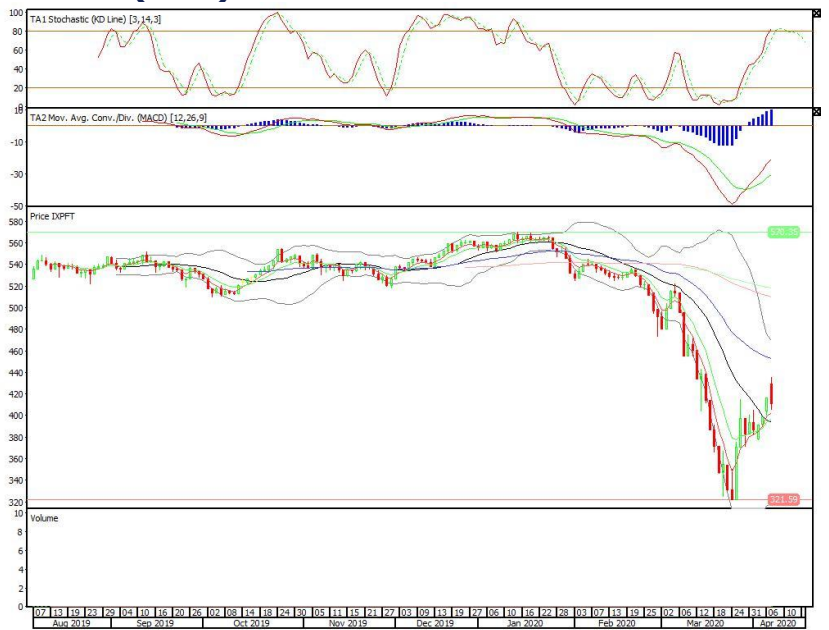


**Pinnacle FTSE Indonesia ETF**

**Rekomendasi: Buy on Weakness**

---Candle ditutup di bawah EMA50 dengan membentuk pola long black marubozu yang merupakan sinyal bearish continuation, stochastic overbought, MACD histogram divergence positif. Target harga beli pada level 386 dengan *resist* di level 429 kemudian 455.

**XPFT (411)**



**Head Office****PT INDO PREMIER SEKURITAS**

Pacific Century Place 16/F, SCBD Lot 10

Jl. Jend. Sudirman Kav.52-53

Jakarta 12190 - Indonesia

p +62.21.5088.7200

**ANALYSTS CERTIFICATION.**

The views expressed in this research report accurately reflect the analyst's personal views about any and all of the subject securities or issuers; and no part of the research analyst's compensation was, is, or will be, directly or indirectly, related to the specific recommendations or views expressed in the report.

**DISCLAIMERS**

This research is based on information obtained from sources believed to be reliable, but we do not make any representation or warranty nor accept any responsibility or liability as to its accuracy, completeness or correctness. Opinions expressed are subject to change without notice. This document is prepared for general circulation. Any recommendations contained in this document does not have regard to the specific investment objectives, financial situation and the particular needs of any specific addressee. This document is not and should not be construed as an offer or a solicitation of an offer to purchase or subscribe or sell any securities. PT. Indo Premier Sekuritas or its affiliates may seek or will seek investment banking or other business relationships with the companies in this report.