

Technical Corner

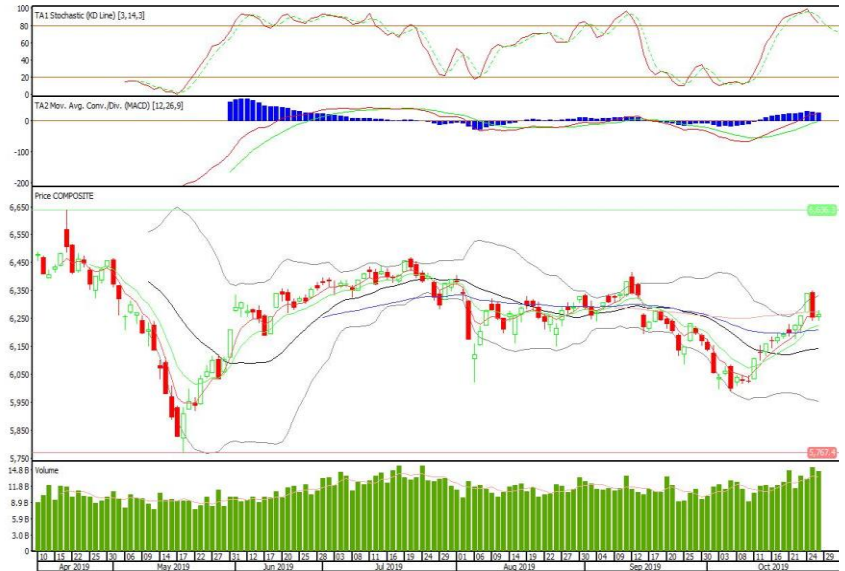
29 Oktober 2019

IHSG

Range: 6.235 - 6.295

---Indeks ditutup di atas EMA5,10 dan membentuk pola spinning top yang merupakan sinyal indecision, stochastic overbought dan MACD histogram convergence positif. Target kenaikan indeks pada level 6.295 kemudian 6.325 dengan support di level 6.235 dan 6.205.

IHSG (6.265)



Bank Mandiri

Rekomendasi: Buy

---Candle ditutup di atas EMA5,10 dan membentuk pola doji yang merupakan sinyal indecision, stochastic overbought dan MACD histogram convergence positif. Target kenaikan harga pada level 7.125 kemudian 7.250 dengan support di level 6.875, cut loss jika break 6.775.

BMRI (7.000)



Semen Indonesia

Rekomendasi: Buy

---Candle ditutup di atas EMA5,10 dan membentuk pola white closing marubozu yang merupakan sinyal bullish continuation, stochastic overbought dan MACD histogram divergence positif. Target kenaikan harga pada level 13.325 kemudian 13.700 dengan *support* di level 12.550, *cut loss* jika *break* 12.225.

SMGR (12.950)



Indofood CBP Sukses Makmur

Rekomendasi: Buy

---Candle ditutup di atas EMA5,10 dengan membentuk pola long white marubozu merupakan sinyal bullish continuation, stochastic netral, MACD histogram convergence negatif. Target kenaikan harga pada level 11.950 kemudian 12.200 dengan *support* di level 11.450, *cut loss* jika *break* 11.200.

ICBP (11.700)

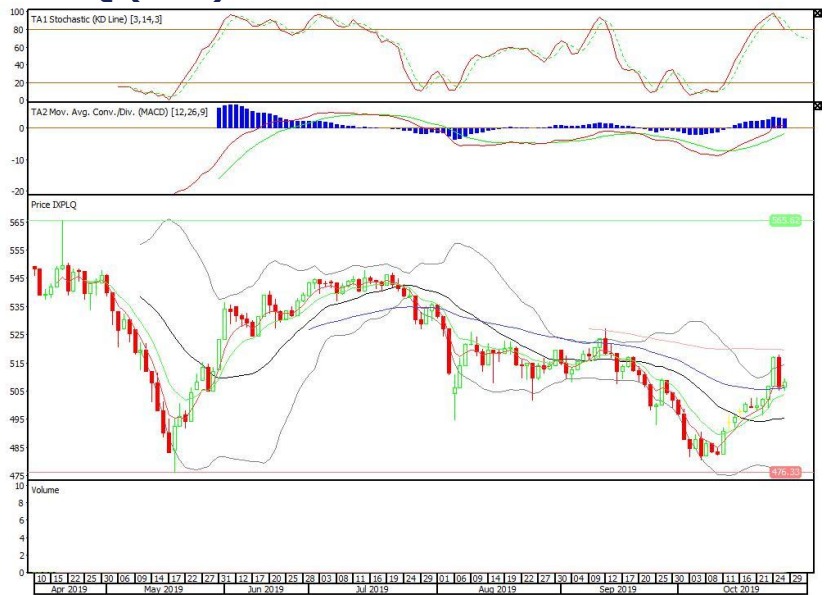


Pinnacle Enhanced Liquid ETF

Rekomendasi: Buy

---Candle ditutup di atas EMA5,10 dengan membentuk pola small bullish candle, stochastic overbought, MACD histogram convergence positif. Target kenaikan harga pada level 509 kemudian 511 dengan *support* di level 506, *cut loss* jika *break* 504.

XPLQ (508)

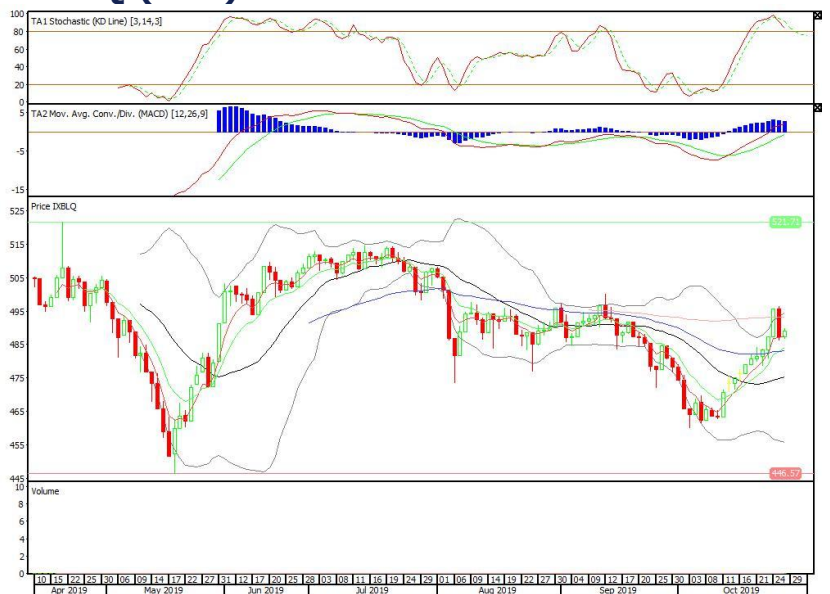


Batavia Smart Liquid ETF

Rekomendasi: Buy

---Candle ditutup di atas EMA5,10 dengan membentuk pola small bullish candle, stochastic overbought, MACD histogram convergence positif. Target kenaikan harga pada level 490 kemudian 492 dengan *support* di level 487, *cut loss* jika *break* 485.

XBLQ (488)

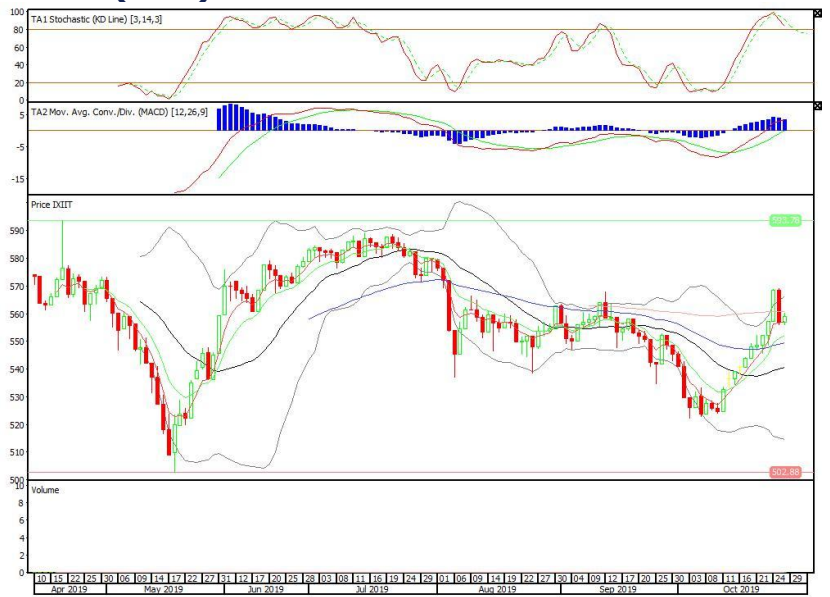


Premier ETF IDX30

Rekomendasi: Buy

---Candle ditutup di atas EMA5,10 dengan membentuk pola small bullish candle, stochastic overbought, MACD histogram convergence positif. Target kenaikan harga pada level 560 kemudian 562 dengan *support* di level 556, *cut loss* jika *break* 554.

XIIT (558)



Head Office**PT INDO PREMIER SEKURITAS**

Pacific Century Place 16/F, SCBD Lot 10

Jl. Jend. Sudirman Kav.52-53

Jakarta 12190 - Indonesia

p +62.21.5088.7200

ANALYSTS CERTIFICATION.

The views expressed in this research report accurately reflect the analyst's personal views about any and all of the subject securities or issuers; and no part of the research analyst's compensation was, is, or will be, directly or indirectly, related to the specific recommendations or views expressed in the report.

DISCLAIMERS

This research is based on information obtained from sources believed to be reliable, but we do not make any representation or warranty nor accept any responsibility or liability as to its accuracy, completeness or correctness. Opinions expressed are subject to change without notice. This document is prepared for general circulation. Any recommendations contained in this document does not have regard to the specific investment objectives, financial situation and the particular needs of any specific addressee. This document is not and should not be construed as an offer or a solicitation of an offer to purchase or subscribe or sell any securities. PT. Indo Premier Sekuritas or its affiliates may seek or will seek investment banking or other business relationships with the companies in this report.