

Technical Corner

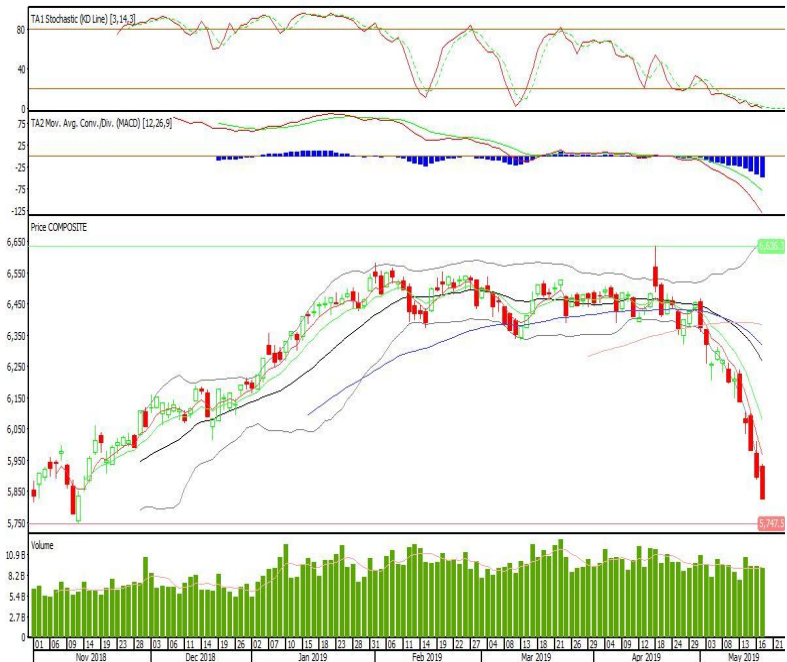
Technical | Indonesia | Daily Research

IHSG

Range: 5.725-5.930

---Indeks ditutup dibawah EMA5,10 dengan membentuk pola black closing marubozu yang merupakan sinyal bearish continuation, MACD histogram divergence negatif sedangkan stochastic oversold. Target pelemahan indeks pada level 5.725 kemudian 5.620 dengan resist di level 5.930 dan 6.035.

IHSG (5.826)



Media Nusantara Citra

Rekomendasi: Buy

---Candle ditutup diatas EMA5,10 dengan membentuk pola long white marubozu yang merupakan sinyal bullish continuation, stochastic netral, MACD histogram convergence negatif. Target kenaikan harga pada level 940 kemudian 960 dengan support di level 900, cut loss jika break 880.

MNCN (920)

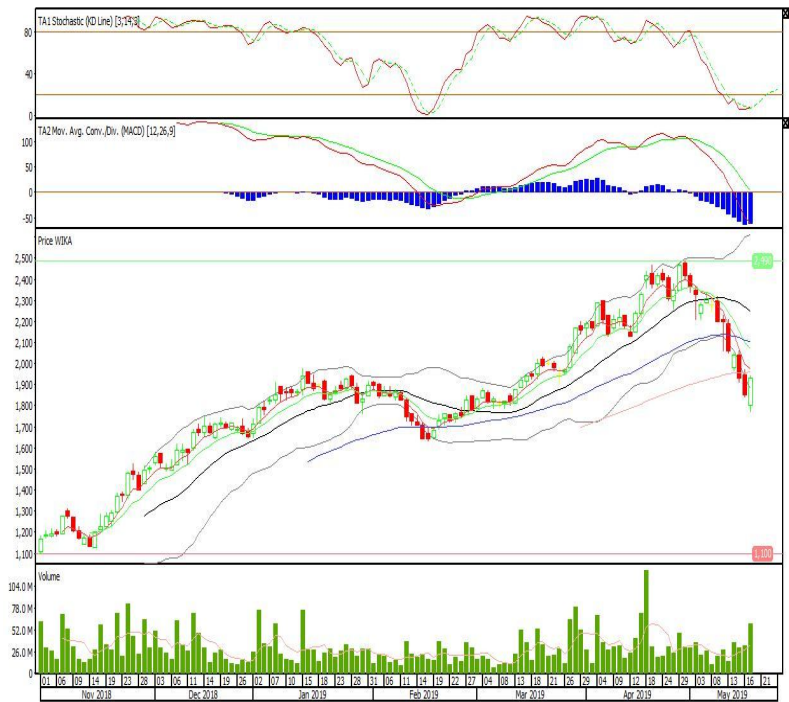


**Wijaya Karya**

**Rekomendasi: Buy**

---Candle ditutup diatas lowerband dengan membentuk pola long white marubozu yang merupakan sinyal bullish continuation, stochastic golden cross, MACD histogram convergence negatif. Target kenaikan harga pada level 2.060 kemudian 2.190 dengan support di level 1.800, cut loss jika break 1.670.

**WIKA (1.930)**



**Waskita Beton Precast**

**Rekomendasi: Buy on Weakness**

---Candle ditutup dibawah EMA5,10 dengan membentuk pola doji yang merupakan sinyal indecision, stochastic oversold dan MACD histogram convergence negatif. Target harga beli pada level 362 dengan resist di level 370 kemudian 374.

**WSBP (366)**

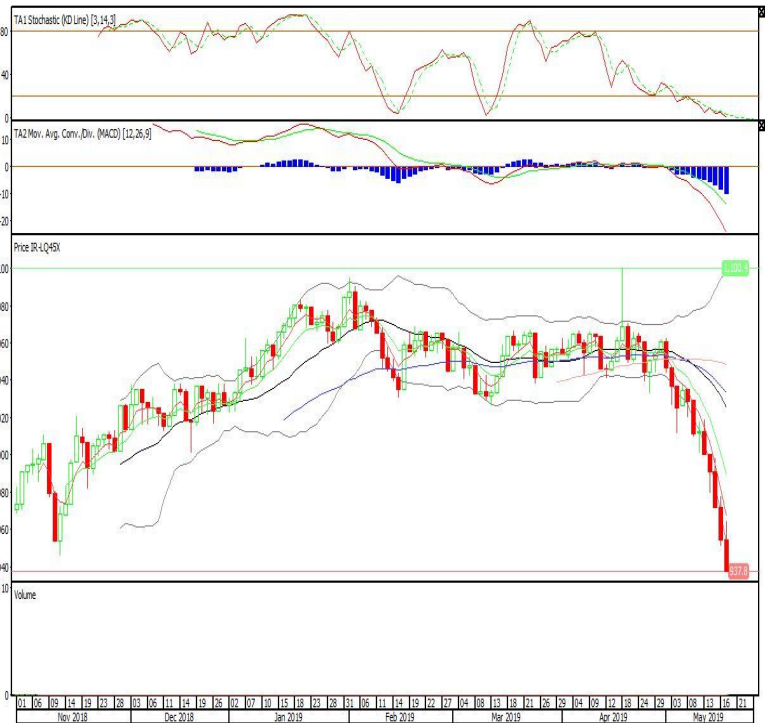


Premier ETF LQ-45

**Rekomendasi: SELL**

---Candle ditutup dibawah lowerband dengan membentuk pola black closing marubozu yang merupakan sinyal bearish continuation, stochastic oversold, MACD histogram divergence negatif. Target pelemahan harga pada level 921 kemudian 904 dengan *resist* di level 954 dan 970.

**R-LQ45X (937)**



ETF MNC36 Likuid

**Rekomendasi: SELL**

---Candle ditutup dibawah lowerband dengan membentuk pola black closing marubozu yang merupakan sinyal bearish continuation, stochastic oversold, MACD histogram divergence negatif. Target pelemahan harga pada level 477 kemudian 469 dengan *resist* di level 491 dan 499.

**XMTS (484)**

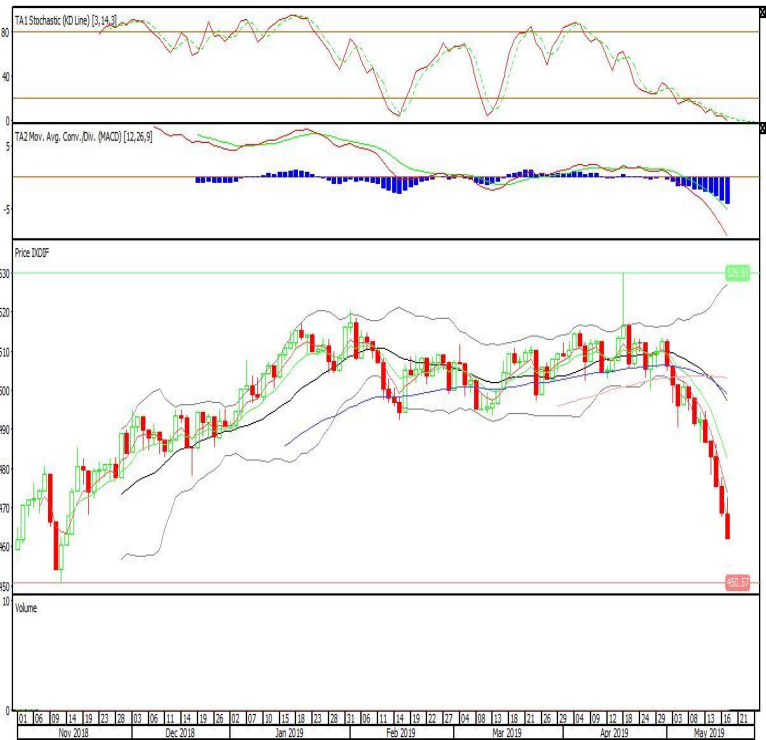


Danareksa ETF Indonesia Top 40

**Rekomendasi: SELL**

---Candle ditutup dibawah lowerband dengan membentuk pola black closing marubozu yang merupakan sinyal bearish continuation, stochastic oversold, MACD histogram divergence negatif. Target pelemahan harga pada level 455 kemudian 449 dengan resist di level 468 dan 474.

**XDIF (462)**



**Head Office****PT INDO PREMIER SEKURITAS**

Wisma GKBI 7/F Suite 718

Jl. Jend. Sudirman No.28

Jakarta 10210 - Indonesia

p +62.21.5793.1168

f +62.21.5793.1167

**ANALYSTS CERTIFICATION.**

The views expressed in this research report accurately reflect the analyst's personal views about any and all of the subject securities or issuers; and no part of the research analyst's compensation was, is, or will be, directly or indirectly, related to the specific recommendations or views expressed in the report.

**DISCLAIMERS**

This research is based on information obtained from sources believed to be reliable, but we do not make any representation or warranty nor accept any responsibility or liability as to its accuracy, completeness or correctness. Opinions expressed are subject to change without notice. This document is prepared for general circulation. Any recommendations contained in this document does not have regard to the specific investment objectives, financial situation and the particular needs of any specific addressee. This document is not and should not be construed as an offer or a solicitation of an offer to purchase or subscribe or sell any securities. PT. Indo Premier Sekuritas or its affiliates may seek or will seek investment banking or other business relationships with the companies in this report.