

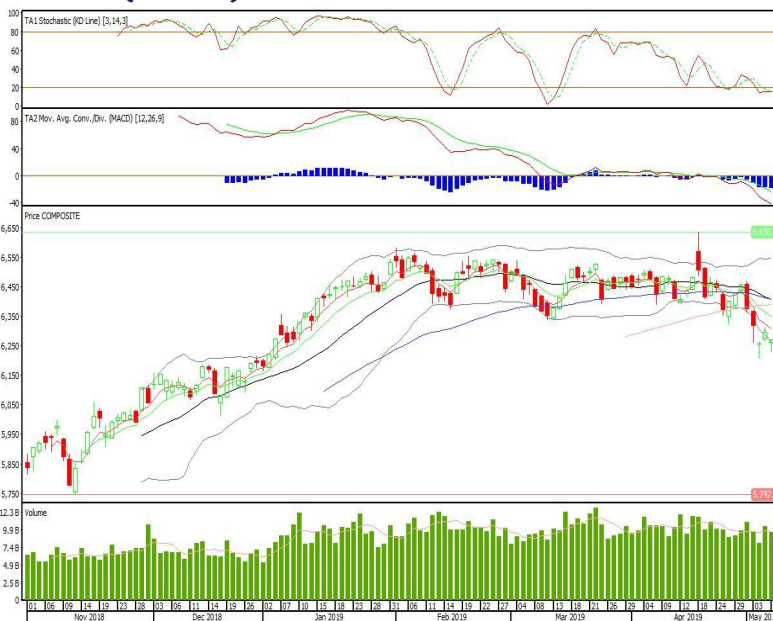
Technical Corner

IHSG

Range: 6.225-6.310

---Indeks ditutup di bawah EMA5,10 dan membentuk small bearish candle, stochastic oversold dan MACD histogram divergence positif. Target pelemahan indeks pada level 6.225 kemudian 6.185 dengan *resist* di level 6.310 dan 6.350.

IHSG (6.270)



Ciputra Development

Rekomendasi: Buy

---Candle ditutup di atas EMA50 dan membentuk long white marubozu yang merupakan sinyal bullish continuation, stochastic oversold dan MACD histogram convergence negatif. Target kenaikan harga pada level 1.095 kemudian 1.125 dengan *support* di level 1.040, *cut loss* jika *break* 1.135.

CTRA (1.065)



Unilever Indonesia

Rekomendasi: Buy

---Candle ditutup dengan membentuk pola white closing maubozu yang merupakan sinyal bullish continuation, stochastic oversold dan MACD histogram convergence negatif. Target kenaikan harga pada level 45.375 kemudian 46.050 dengan support di level 44.150, cut loss jika break 43.525.

UNVR (44.800)



Pakuwon Jati

Rekomendasi: Buy

---Candle ditutup diatas MA100 dan membentuk pola long white marubozu yang merupakan sinyal bullish continuation, stochastic golden cross dan MACD histogram convergence negatif. Target kenaikan harga pada level 700 kemudian 715 dengan support di level 665, cut loss jika break 650.

PWON (680)

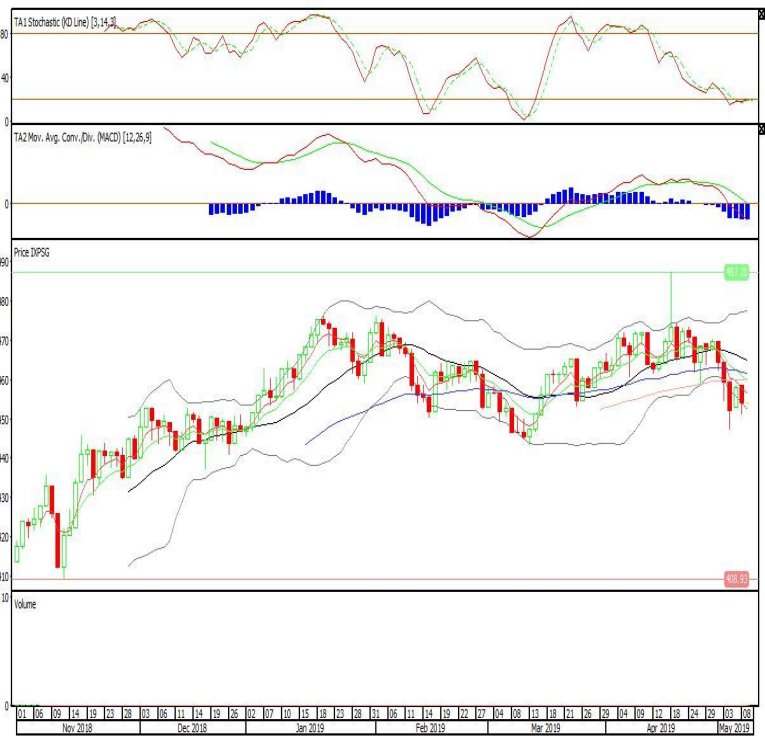


Pinnacle Indonesia ESG ETF

Rekomendasi: SELL

---Candle ditutup dibawah EMA5,10 dengan membentuk pola black opening marubozu yang merupakan sinyal bearish continuation, stochastic oversold, MACD histogram divergence negatif. Target pelemahan harga pada level 449 kemudian 445 dengan *resist* di level 458 dan 462.

XPSG (454)

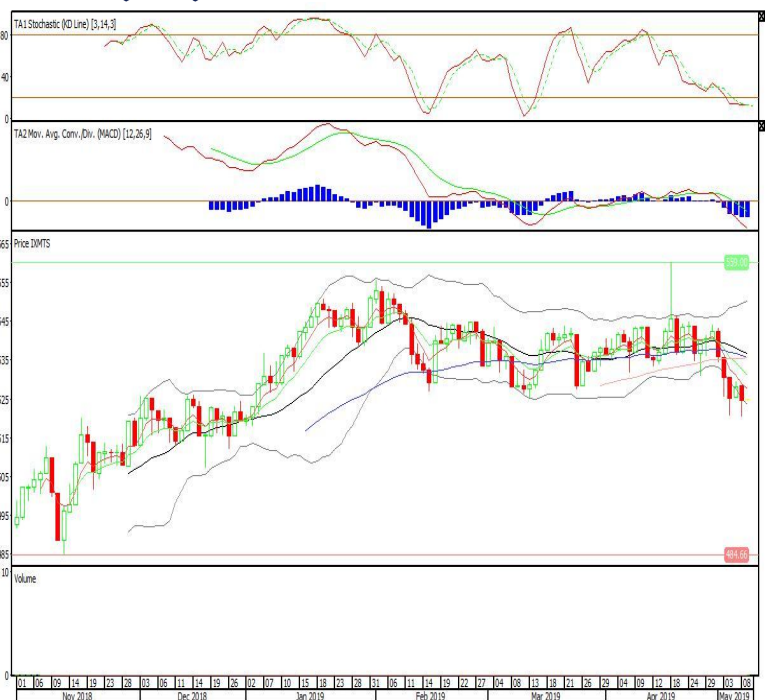


ETF MNC36 Likuid

Rekomendasi: SELL

---Candle ditutup dibawah EMA5,10 dengan membentuk pola black opening marubozu yang merupakan sinyal bearish continuation, stochastic oversold, MACD histogram divergence negatif. Target pelemahan harga pada level 520 kemudian 517 dengan *resist* di level 528 dan 532.

XMTS (524)

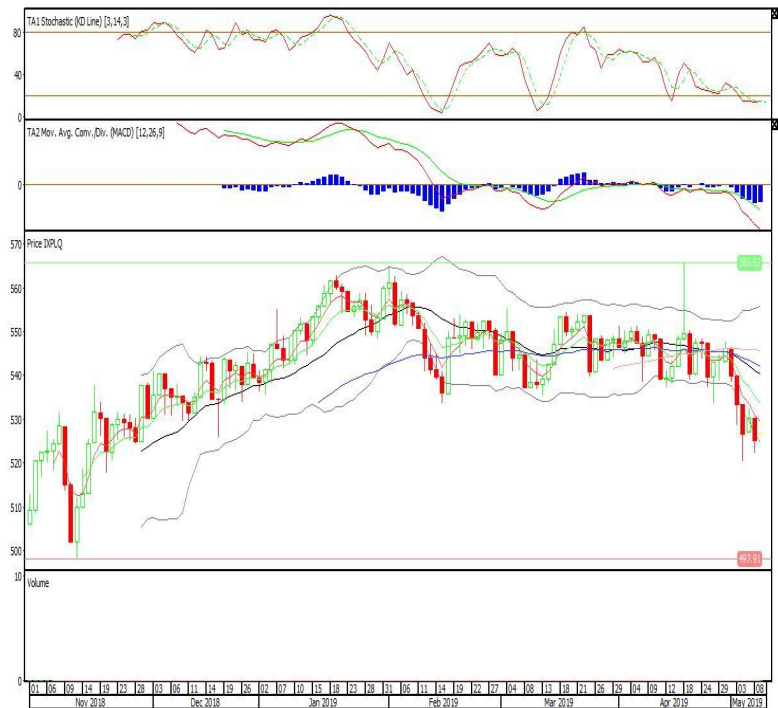


Pinnacle Enhanced Liquid ETF

Rekomendasi: SELL

---Candle ditutup dibawah EMA5,10 dengan membentuk pola black opening marubozu yang merupakan sinyal bearish continuation, stochastic oversold, MACD histogram convergence negatif. Target pelemahan harga pada level 520 kemudian 515 dengan *resist* di level 530 dan 535.

XPLQ (525)



Head Office**PT INDO PREMIER SEKURITAS**

Wisma GKBI 7/F Suite 718

Jl. Jend. Sudirman No.28

Jakarta 10210 - Indonesia

p +62.21.5793.1168

f +62.21.5793.1167

ANALYSTS CERTIFICATION.

The views expressed in this research report accurately reflect the analyst's personal views about any and all of the subject securities or issuers; and no part of the research analyst's compensation was, is, or will be, directly or indirectly, related to the specific recommendations or views expressed in the report.

DISCLAIMERS

This research is based on information obtained from sources believed to be reliable, but we do not make any representation or warranty nor accept any responsibility or liability as to its accuracy, completeness or correctness. Opinions expressed are subject to change without notice. This document is prepared for general circulation. Any recommendations contained in this document does not have regard to the specific investment objectives, financial situation and the particular needs of any specific addressee. This document is not and should not be construed as an offer or a solicitation of an offer to purchase or subscribe or sell any securities. PT. Indo Premier Sekuritas or its affiliates may seek or will seek investment banking or other business relationships with the companies in this report.