

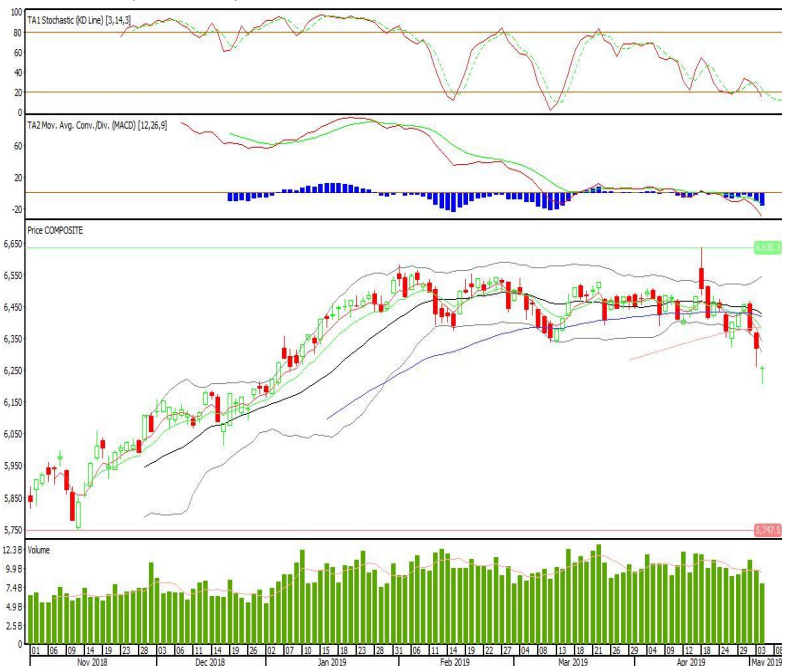
# Technical Corner

## IHSG

**Range: 6.220-6.295**

---Indeks dibuka dengan gap down dan membentuk pola doji yang merupakan sinyal indecision, stochastic oversold dan MACD histogram divergence negatif. Target pelemahan indeks pada level 6.220 kemudian 6.190 dengan *resist* di level 6.295 dan 6.330.

## IHSG (6.256)



## XL Axiata

**Rekomendasi: Buy**

---Candle ditutup di atas EMA5,10 dan membentuk pola long white marubozu yang merupakan sinyal bullish continuation, stochastic netral sedangkan MACD histogram convergence negatif. Target kenaikan harga pada level 2.910 kemudian 2.970 dengan *support* di level 2.780, *cut loss* jika *break* 2.730.

## EXCL (2.850)

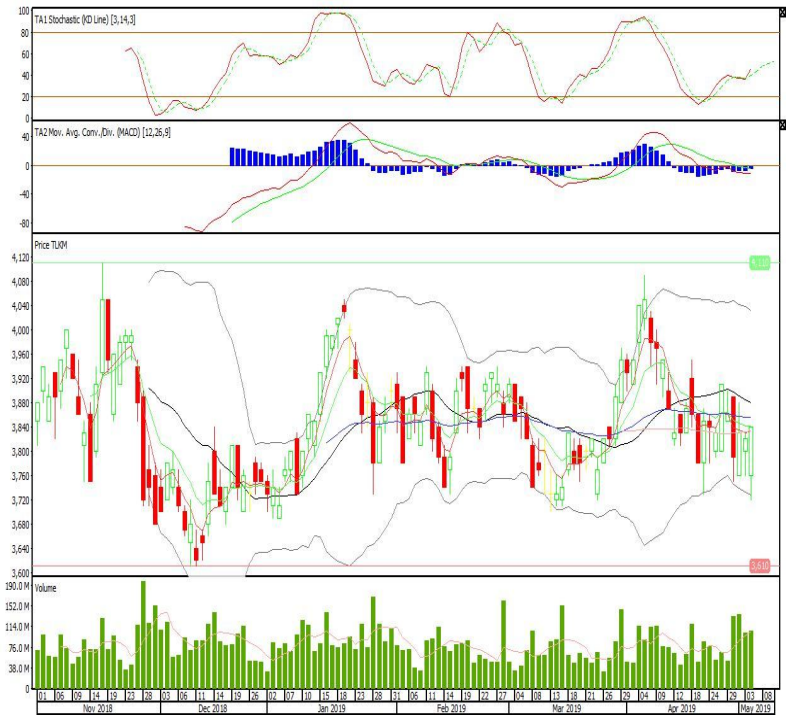


Telekomunikasi Indonesia

**Rekomendasi: Buy**

---Candle ditutup di atas EMA10 dan membentuk pola white opening marubozu yang merupakan sinyal bullish continuation, stochastic netral dan MACD histogram convergence negatif. Target kenaikan harga pada level 3.890 kemudian 3.930 dengan *support* di level 3.780, *cut loss* jika *break* 3.720.

**TLKM (3.840)**



Media Nusantara Citra

**Rekomendasi: Buy on Weakness**

---Candle ditutup dibawah EMA5,10 dengan membentuk pola doji yang merupakan sinyal indecision, stochastic netral, MACD histogram convergence positif. Target harga beli pada level 880 dengan *resist* di level 920 kemudian 940.

**MNCN (900)**

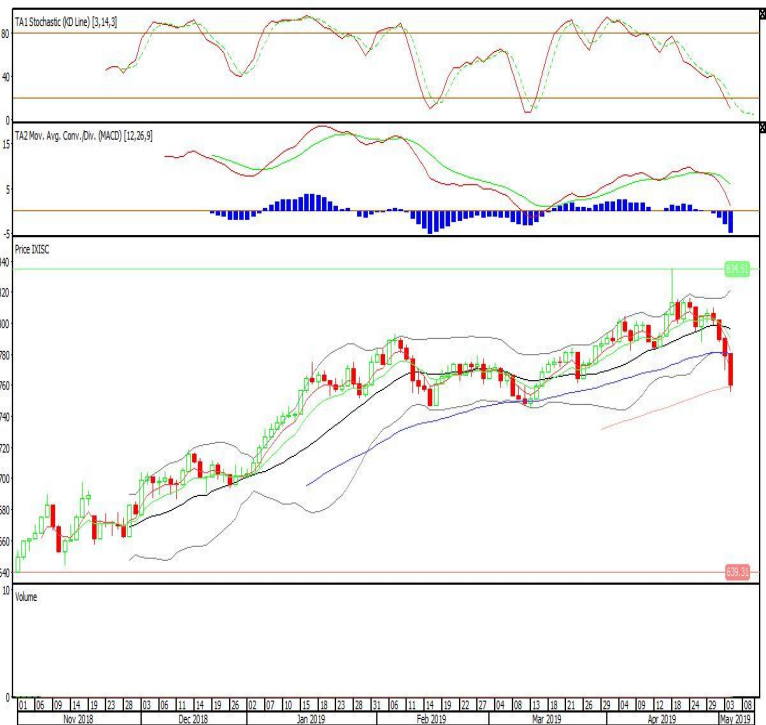


Premier ETF Indonesia Stated-Owned Companies

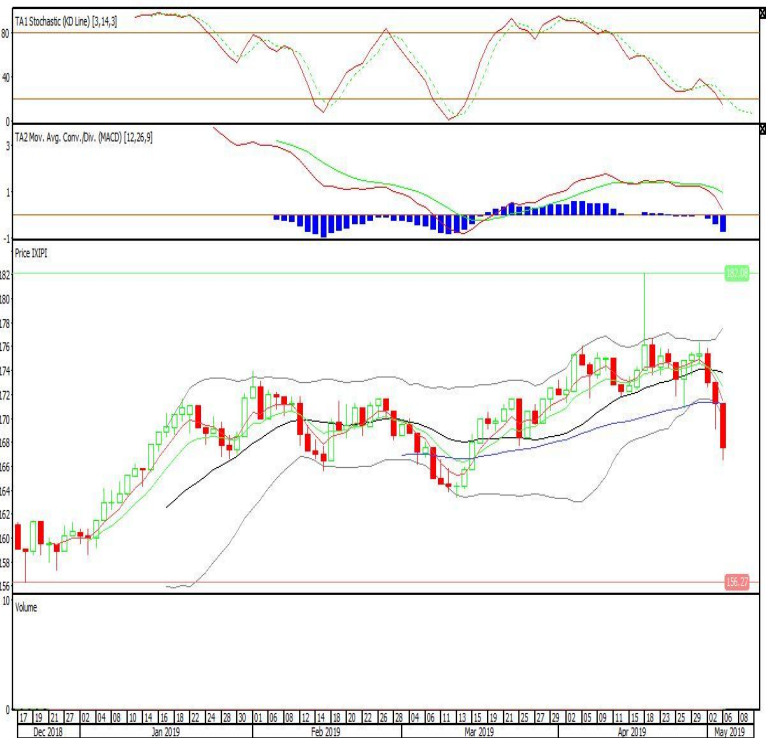
**Rekomendasi: SELL**

---Candle ditutup dibawah EMA50 dengan membentuk pola black opening marubozu yang merupakan sinyal bearish continuation, stochastic oversold, MACD histogram divergence negatif. Target pelemahan harga pada level 740 kemudian 720 dengan resist di level 780 dan 800.

**XISC (760)**



**XIPI (167)**



Premier ETF PEFINDO i-Grade

**Rekomendasi: SELL**

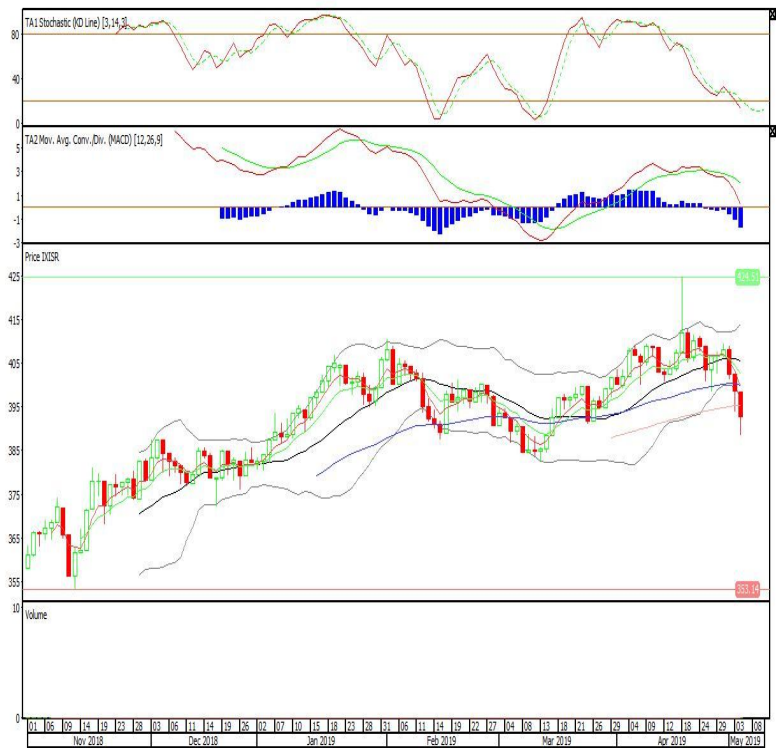
---Candle ditutup dibawah EMA50 dengan membentuk pola black opening marubozu yang merupakan sinyal bearish continuation, stochastic oversold, MACD histogram divergence negatif. Target pelemahan harga pada level 163 kemudian 160 dengan resist di level 171 dan 174.

Premier ETF SRI-KEHATI

**Rekomendasi: SELL**

---Candle ditutup dibawah MA100 dengan membentuk pola black opening marubozu yang merupakan sinyal bearish continuation, stochastic oversold, MACD histogram divergence negatif. Target pelemahan harga pada level 386 kemudian 381 dengan *resist* di level 398 dan 404.

**XISR (392)**



**Head Office****PT INDO PREMIER SEKURITAS**

Wisma GKBI 7/F Suite 718

Jl. Jend. Sudirman No.28

Jakarta 10210 - Indonesia

p +62.21.5793.1168

f +62.21.5793.1167

**ANALYSTS CERTIFICATION.**

The views expressed in this research report accurately reflect the analyst's personal views about any and all of the subject securities or issuers; and no part of the research analyst's compensation was, is, or will be, directly or indirectly, related to the specific recommendations or views expressed in the report.

**DISCLAIMERS**

This research is based on information obtained from sources believed to be reliable, but we do not make any representation or warranty nor accept any responsibility or liability as to its accuracy, completeness or correctness. Opinions expressed are subject to change without notice. This document is prepared for general circulation. Any recommendations contained in this document does not have regard to the specific investment objectives, financial situation and the particular needs of any specific addressee. This document is not and should not be construed as an offer or a solicitation of an offer to purchase or subscribe or sell any securities. PT. Indo Premier Sekuritas or its affiliates may seek or will seek investment banking or other business relationships with the companies in this report.