

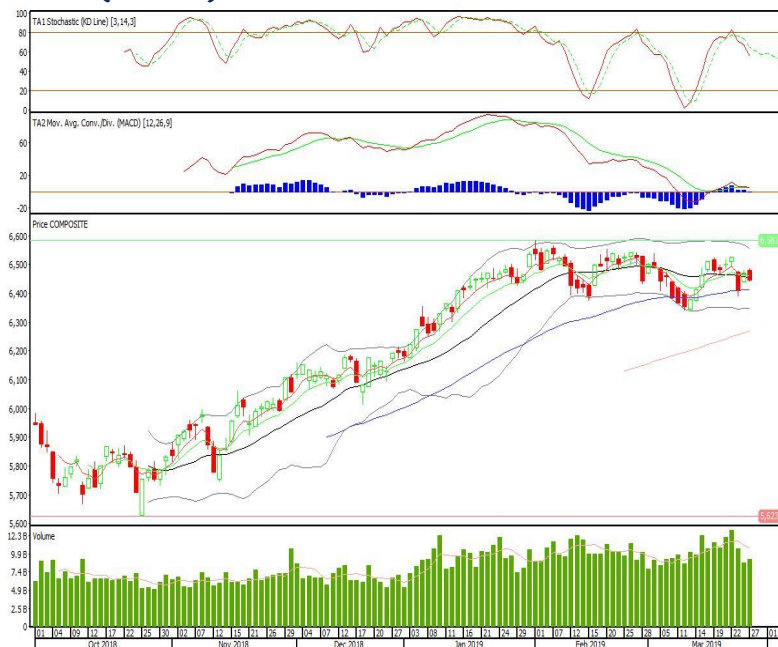
Technical Corner

IHSG

Range: 6.410–6.480

---Indeks ditutup di bawah MA20 dan membentuk pola long black marubozu yang merupakan sinyal bearish continuation, stochastic netral dan MACD histogram convergence positif. Target pelemahan indeks pada level 6.410 kemudian 6.375 dengan *resist* di level 6.480 dan 6.520.

IHSG (6.444)

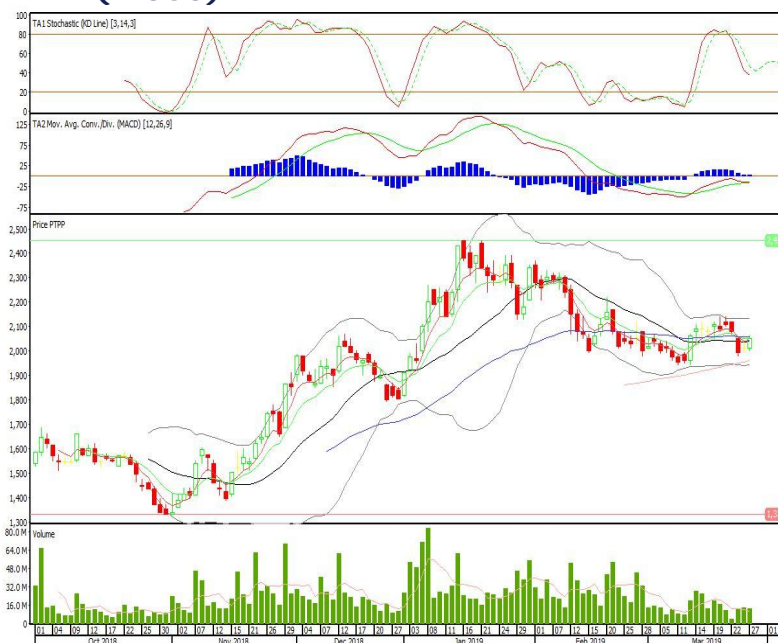


Pembangunan Perumahan

Rekomendasi: Buy

---Candle ditutup di atas MA20 dan membentuk pola long white marubozu yang merupakan sinyal bullish continuation, stochastic netral dan MACD histogram convergence positif. Target kenaikan harga pada level 2.100 kemudian 2.150 dengan *support* di level 2.000. *cut loss* jika *break* 1.950.

PTPP (2.050)



Adhi Karya

Rekomendasi: Buy

---Candle ditutup di atas EMA5,10 dan membentuk pola white marubozu yang merupakan sinyal bullish continuation, stochastic netral dan MACD histogram divergence positif. Target kenaikan harga pada level 1.620 kemudian 1.660 dengan *support* di level 1.550, *cut loss* jika *break* 1.510.

ADHI (1.585)

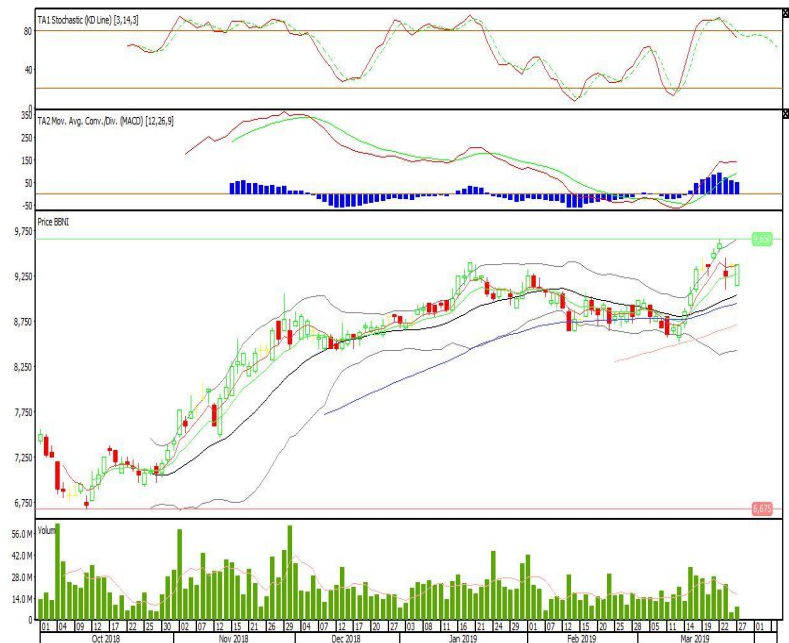


Bank Negara Indonesia

Rekomendasi: Buy

---Candle ditutup diatas EMA5,10 dengan membentuk pola white marubozu yang merupakan sinyal bullish continuation, stochastic netral, MACD histogram convergence positif. Target kenaikan harga pada level 9.600 kemudian 9.825 dengan *support* di level 9.150, *cut loss* jika *break* 8.925.

BBNI (9.375)



Pinnacle FTSE Indonesia ETF

Rekomendasi: SELL

---Candle ditutup dibawah EMA50 dengan membentuk pola black closing marubozu yang merupakan sinyal bearish continuation, stochastic netral, MACD histogram convergence positif. Target pelemahan harga pada level 536 kemudian 531 dengan *resist* di level 545 dan 549.

XPFT (540)

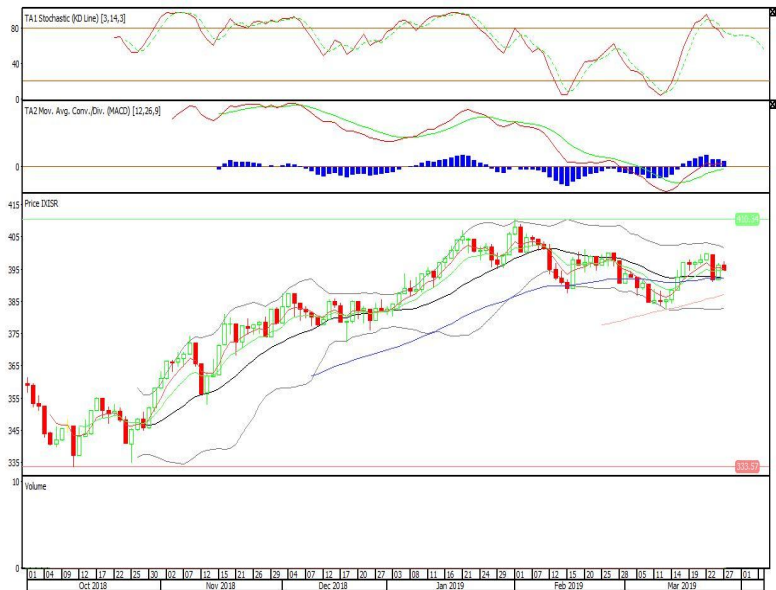


Premier ETF SRI-KEHATI

Rekomendasi: SELL

---Candle ditutup tepat pada EMA10 dengan membentuk pola small bearish candle, stochastic netral, MACD histogram convergence positif. Target pelemahan harga pada level 392 kemudian 389 dengan *resist* di level 397 dan 399.

XISR (394)



Pinnacle Indonesia ESG ETF

Rekomendasi: SELL

---Candle ditutup dibawah EMA10 dan membentuk pola small bearish candle, stochastic netral, MACD histogram convergence positif. Target pelemahan harga pada level 455 kemudian 452 dengan *resist* di level 460 dan 463.

XPSG (458)



Head Office**PT INDO PREMIER SEKURITAS**

Wisma GKBI 7/F Suite 718

Jl. Jend. Sudirman No.28

Jakarta 10210 - Indonesia

p +62.21.5793.1168

f +62.21.5793.1167

ANALYSTS CERTIFICATION.

The views expressed in this research report accurately reflect the analyst's personal views about any and all of the subject securities or issuers; and no part of the research analyst's compensation was, is, or will be, directly or indirectly, related to the specific recommendations or views expressed in the report.

DISCLAIMERS

This research is based on information obtained from sources believed to be reliable, but we do not make any representation or warranty nor accept any responsibility or liability as to its accuracy, completeness or correctness. Opinions expressed are subject to change without notice. This document is prepared for general circulation. Any recommendations contained in this document does not have regard to the specific investment objectives, financial situation and the particular needs of any specific addressee. This document is not and should not be construed as an offer or a solicitation of an offer to purchase or subscribe or sell any securities. PT. Indo Premier Sekuritas or its affiliates may seek or will seek investment banking or other business relationships with the companies in this report.