

Technical Corner

24 February 2023

IHSG

Range: 6.810 – 6.870

---Indeks ditutup membentuk pola white closing marubozu yang merupakan sinyal bullish continuation, stochastic netral dan MACD histogram divergence negatif.

Target kenaikan indeks pada level **6.870** kemudian 6.900 dengan *support* di level 6.810 kemudian 6.780.

IHSG (6.840)



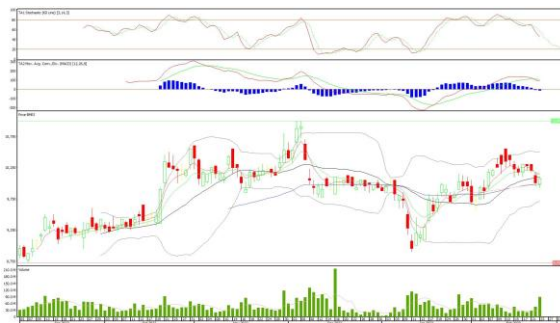
PT Bank Mandiri, Tbk

Rekomendasi: Buy

---Harga ditutup membentuk pola long white marubozu yang merupakan sinyal bullish continuation, stochastic netral dan MACD histogram divergence negatif.

Target kenaikan harga pada level **10.200** kemudian 10.325 dengan *support* di level 9.950 *cut loss* jika break 9.825.

BMRI (10.075)



Technical Corner

24 February 2023

PT Bank Syariah Indonesia, Tbk

Rekomendasi: Buy

---Harga ditutup di atas EMA5,10 dan membentuk pola doji yang merupakan sinyal indecision, stochastic memasuki zona netral dan MACD histogram convergence positif. **Target** kenaikan harga pada level **1.645** kemudian 1.665 dengan *support* di level 1.605 *cut loss* jika break 1.585.

BRIS (1.625)



PT Mitra Adiperkasa, Tbk

Rekomendasi: Buy

--- Harga ditutup membentuk pola small bearish candle namun masih di atas EMA50, stochastic netral dan MACD histogram divergence negatif. **Target** kenaikan harga pada level **1.610** kemudian 1.630 dengan *support* di level 1.570 *cut loss* jika break 1.550.

MAPI (1.590)



Technical Corner

24 February 2023

PT XL Axiata, Tbk

Rekomendasi: Buy on Weakness

---Harga ditutup membentuk pola small bearish candle, stochastic death cross dan MACD histogram convergence positif.

Target harga beli pada level **2.250** dengan *resist* di level 2.300 kemudian 2.350.

EXCL (2.270)



PT INDO PREMIER SEKURITAS

Pacific Century Place 16th Floor SCBD Lot 10
 Jl. Jend. Sudirman Kav. 52-53
 Jakarta Selatan 12190 - Indonesia
 p +62 21 5088 7200

ANALYSTS CERTIFICATION

The views expressed in this research report accurately reflect the analyst's personal views about any and all of the subject securities or issuers; and no part of the research analyst's compensation was, is, or will be, directly or indirectly, related to the specific recommendations or views expressed in the report.

DISCLAIMERS

This research is based on information obtained from sources believed to be reliable, but we do not make any representation or warranty nor accept any responsibility or liability as to its accuracy, completeness or correctness. Opinions expressed are subject to change without notice. This document is prepared for general circulation. Any recommendations contained in this document does not have regard to the specific investment objectives, financial situation and the particular needs of any specific addressee. This document is not and should not be construed as an offer or a solicitation of an offer to purchase or subscribe or sell any securities. PT. Indo Premier Sekuritas or its affiliates may seek or will seek investment banking or other business relationships with the companies in this report.

Refer to Important disclosures on the last of this report