

Technical Corner

15 February 2023

IHSG

Range: 6.910 – 6.970

---Indeks ditutup di atas EMA5,10 dan membentuk pola white closing marubozu yang merupakan sinyal bullish continuation, stochastic golden cross dan MACD histogram divergence positif.

Target kenaikan indeks pada level **6.970** kemudian 7.000 dengan *support* di level 6.910 kemudian 6.880.

IHSG (6.942)

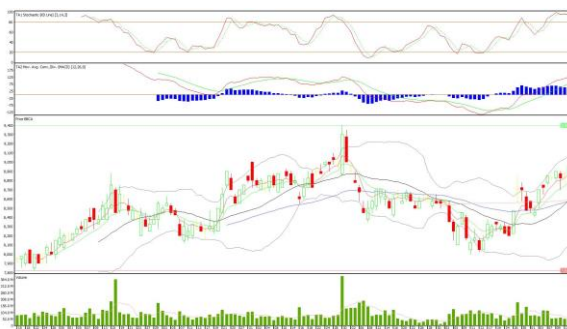


PT Bank Central Asia, Tbk

Rekomendasi: Buy

---Harga ditutup di atas EMA5,10 dan membentuk pola white closing marubozu yang merupakan sinyal bullish continuation, stochastic konsisten overbought dan MACD histogram convergence positif. **Target** kenaikan harga pada level **9.050** kemudian 9.150 dengan *support* di level 8.850 *cut loss* jika break 8.750.

BBCA (8.950)



Technical Corner

15 February 2023

PT Bank Syariah Indonesia, Tbk

Rekomendasi: Buy

---Harga ditutup di atas EMA5,10 dan membentuk pola small bullish candle, stochastic netral dan MACD histogram convergence negatif. **Target** kenaikan harga pada level **1.410** kemudian 1.430 dengan *support* di level 1.370 *cut loss* jika break 1.350.

BRIS (1.390)



PT Go To Gojek Tokopedia, Tbk

Rekomendasi: Buy

---Harga ditutup di atas EMA5,10 dan membentuk pola small bullish candle, stochastic golden cross dan MACD histogram convergence negatif. **Target** kenaikan harga pada level **122** kemudian 125 dengan *support* di level 116 *cut loss* jika break 113.

GOTO (119)



Technical Corner

15 February 2023

PT Bank Negara Indonesia, Tbk

Rekomendasi: Buy on Weakness

---Harga ditutup membentuk pola small bearish candle namun masih di atas EMA10, stochastic death cross dan MACD histogram convergence positif. **Target** harga beli pada level **9.400** dengan *resist* di level 9.575 kemudian 9.700.

BBNI (9.450)



PT INDO PREMIER SEKURITAS

Pacific Century Place 16th Floor SCBD Lot 10
 Jl. Jend. Sudirman Kav. 52-53
 Jakarta Selatan 12190 - Indonesia
 p +62 21 5088 7200

ANALYSTS CERTIFICATION

The views expressed in this research report accurately reflect the analyst's personal views about any and all of the subject securities or issuers; and no part of the research analyst's compensation was, is, or will be, directly or indirectly, related to the specific recommendations or views expressed in the report.

DISCLAIMERS

This research is based on information obtained from sources believed to be reliable, but we do not make any representation or warranty nor accept any responsibility or liability as to its accuracy, completeness or correctness. Opinions expressed are subject to change without notice. This document is prepared for general circulation. Any recommendations contained in this document does not have regard to the specific investment objectives, financial situation and the particular needs of any specific addressee. This document is not and should not be construed as an offer or a solicitation of an offer to purchase or subscribe or sell any securities. PT. Indo Premier Sekuritas or its affiliates may seek or will seek investment banking or other business relationships with the companies in this report.

Refer to Important disclosures on the last of this report