

Technical Corner

13 February 2023

IHSG

Range: 6.840 – 6.920

---Indeks ditutup membentuk pola doji yang merupakan sinyal indecision, stochastic netral dan MACD histogram convergence positif. **Target** kenaikan indeks pada level **6.920** kemudian 6.960 dengan *support* di level 6.840 kemudian 6.800.

IHSG (6.880)



PT Merdeka Copper Gold, Tbk

Rekomendasi: Buy

---Harga ditutup di atas EMA5,10 dan membentuk pola white closing marubozu yang merupakan sinyal bullish continuation, stochastic golden cross dan MACD histogram convergence negatif. **Target** kenaikan harga pada level **4.750** kemudian 4.810 dengan *support* di level 4.630 *cut loss* jika break 4.570.

MDKA (4.690)



Technical Corner

13 February 2023

PT Semen Indonesia, Tbk

Rekomendasi: Buy

---Harga ditutup di atas EMA5,10 dan membentuk pola long white marubozu yang merupakan sinyal bullish continuation, stochastic netral and MACD histogram divergence positif. **Target** kenaikan harga pada level **7.850** kemudian 7.950 dengan *support* di level 7.650 *cut loss* jika break 7.550.

SMGR (7.750)



PT Aneka Tambang, Tbk

Rekomendasi: Buy on Weakness

---Harga ditutup membentuk pola black opening marubozu yang merupakan sinyal bearish continuation namun masih di atas EMA50, stochastic memasuki zona oversold dan MACD histogram divergence negatif. **Target** harga beli pada level **2.190** dengan *resist* di level 2.250 kemudian 2.290.

ANTM (2.220)



Technical Corner

13 February 2023

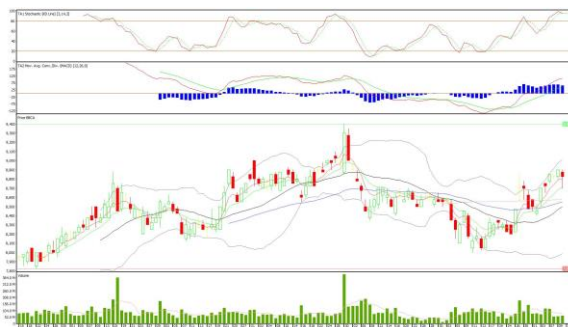
PT Bank Central Asia, Tbk

Rekomendasi: Buy on Weakness

---Harga ditutup membentuk pola small bearish candle namun masih di atas EMA5,10, stochastic death cross dan MACD histogram convergence positif.

Target harga beli pada level **8.775** dengan *resist* di level 8.900 kemudian 9.000.

BBCA (8.825)



PT INDO PREMIER SEKURITAS

Pacific Century Place 16th Floor SCBD Lot 10
 Jl. Jend. Sudirman Kav. 52-53
 Jakarta Selatan 12190 - Indonesia
 p +62 21 5088 7200

ANALYSTS CERTIFICATION

The views expressed in this research report accurately reflect the analyst's personal views about any and all of the subject securities or issuers; and no part of the research analyst's compensation was, is, or will be, directly or indirectly, related to the specific recommendations or views expressed in the report.

DISCLAIMERS

This research is based on information obtained from sources believed to be reliable, but we do not make any representation or warranty nor accept any responsibility or liability as to its accuracy, completeness or correctness. Opinions expressed are subject to change without notice. This document is prepared for general circulation. Any recommendations contained in this document does not have regard to the specific investment objectives, financial situation and the particular needs of any specific addressee. This document is not and should not be construed as an offer or a solicitation of an offer to purchase or subscribe or sell any securities. PT. Indo Premier Sekuritas or its affiliates may seek or will seek investment banking or other business relationships with the companies in this report.

Refer to Important disclosures on the last of this report