

# Technical Corner

31 October 2022

## IHSG

**Range: 7.020 – 7.090**

---Indeks ditutup membentuk pola long black marubozu yang merupakan sinyal bearish continuation, stochastic overbought dan MACD histogram convergence positif. **Target** pelemahan indeks pada level **7.020** kemudian 6.985 dengan *resist* di level 7.090 kemudian 7.125.

## IHSG (7.056)



## PT Bank Mandiri, Tbk

**Rekomendasi: Buy**

---Harga ditutup di atas EMA5,10 dan membentuk pola small bullish candle, stochastic netral dan MACD histogram convergence positif. **Target** kenaikan harga pada level **10.300** kemudian 10.400 dengan *support* di level 10.100 *cut loss* jika break 10.000.

## BMRI (10.200)



# Technical Corner

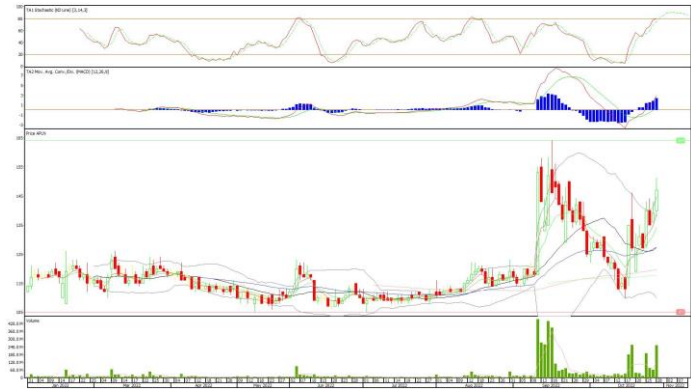
31 October 2022

## PT Agung Podomoro Land, Tbk

### Rekomendasi: Buy

---Harga ditutup di atas EMA5,10 dan membentuk pola long white marubozu yang merupakan sinyal bullish continuation, stochastic netral dan MACD histogram divergence positif. **Target** kenaikan harga pada level **151** kemudian 155 dengan *support* di level 143 *cut loss* jika break 139.

## APLN (147)



## PT Merdeka Copper Gold, Tbk

### Rekomendasi: Buy On Weakness

---Harga ditutup membentuk pola small bearish candle namun masih di atas EMA5,10, stochastic netral dan MACD histogram convergence positif. **Target** harga beli pada level **3.820** dengan *resist* di level 3.920 kemudian 4.040.

## MDKA (3.850)



# Technical Corner

31 October 2022

## PT Perusahaan Gas Negara, Tbk

**Rekomendasi: Buy On Weakness**

---Harga ditutup membentuk pola small bearish candle namun masih di atas EMA5,10, stochastic overbought dan MACD histogram convergence positif.

**Target** harga beli pada level **1.890** dengan *resist* di level 1.935 kemudian 1.955.

## PGAS (1.910)



## Premier ETF Pefindo i-Grade

**Rekomendasi: Buy On Weakness**

---Harga ditutup membentuk pola small bearish candle, stochastic overbought dan MACD histogram convergence positif.

**Target** harga beli pada level **559** dengan *resist* di level 566 kemudian 570.

## XIID (562)



# Technical Corner

31 October 2022

## Premier ETF Indonesia Financial

**Rekomendasi: Buy On Weakness**

---Harga ditutup membentuk pola small bearish candle, stochastic netral dan MACD histogram convergence positif.

**Target** harga beli pada level **540** dengan *resist* di level 550 kemudian 555.

## XIIF (543)



## Premier ETF IDX 30

**Rekomendasi: Buy On Weakness**

---Harga ditutup membentuk pola small bearish candle namun masih di atas EMA5,10, stochastic overbought dan MACD histogram divergence positif.

**Target** harga beli pada level **578** dengan *resist* di level 585 kemudian 589.

## XIIT (581)



# Technical Corner

---

31 October 2022

## **PT INDO PREMIER SEKURITAS**

Pacific Century Place 16th Floor SCBD Lot 10  
Jl. Jend. Sudirman Kav. 52-53  
Jakarta Selatan 12190 - Indonesia  
p +62 21 5088 7200

### **ANALYSTS CERTIFICATION**

The views expressed in this research report accurately reflect the analyst's personal views about any and all of the subject securities or issuers; and no part of the research analyst's compensation was, is, or will be, directly or indirectly, related to the specific recommendations or views expressed in the report.

### **DISCLAIMERS**

This research is based on information obtained from sources believed to be reliable, but we do not make any representation or warranty nor accept any responsibility or liability as to its accuracy, completeness or correctness. Opinions expressed are subject to change without notice. This document is prepared for general circulation. Any recommendations contained in this document does not have regard to the specific investment objectives, financial situation and the particular needs of any specific addressee. This document is not and should not be construed as an offer or a solicitation of an offer to purchase or subscribe or sell any securities. PT. Indo Premier Sekuritas or its affiliates may seek or will seek investment banking or other business relationships with the companies in this report.

**Refer to Important disclosures on the last of this report**