

Technical Corner

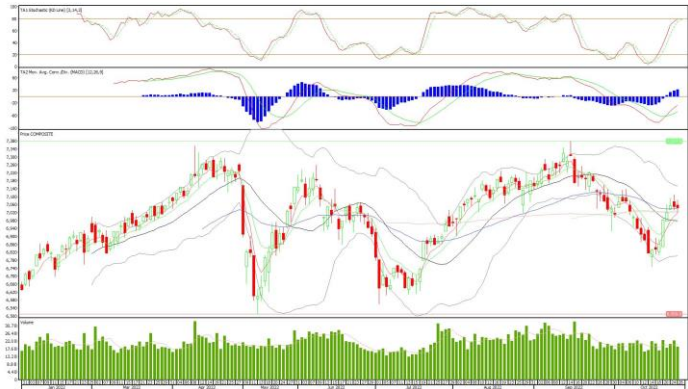
27 October 2022

IHSG

Range: 7.010 – 7.075

---Indeks ditutup membentuk pola small bearish candle namun masih di atas EMA5,10, stochastic netral dan MACD histogram divergence positif. **Target** kenaikan indeks pada level **7.075** kemudian 7.105 dengan *support* di level 7.010 kemudian 6.975.

IHSG (7.044)



PT AKR Corporindo, Tbk

Rekomendasi: Buy

---Harga ditutup membentuk pola white closing marubozu yang merupakan sinyal bullish continuation, stochastic netral dan MACD histogram divergence negatif. **Target** kenaikan harga pada level **1.415** kemudian 1.435 dengan *support* di level 1.375 *cut loss* jika break 1.355.

AKRA (1.395)



Technical Corner

27 October 2022

PT Surya Citra Media, Tbk

Rekomendasi: Buy

---Harga ditutup di atas EMA5,10 dan membentuk pola long white marubozu yang merupakan sinyal bullish continuation, stochastic memasuki zona overbought dan MACD histogram divergence positif. **Target** kenaikan harga pada level **246** kemudian 252 dengan *support* di level 234 *cut loss* jika break 228.

SCMA (240)



PT Unilever Indonesia, Tbk

Rekomendasi: Buy

---Harga ditutup di atas EMA5,10 dan membentuk pola white closing marubozu yang merupakan sinyal bullish continuation, stochastic konsisten overbought dan MACD histogram divergence positif. **Target** kenaikan harga pada level **5.500** kemudian 5.600 dengan *support* di level 5.300 *cut loss* jika break 5.200.

UNVR (5.400)



Technical Corner

27 October 2022

PT Telkom Indonesia, Tbk

Rekomendasi: Buy on Weakness

---Harga ditutup membentuk pola long black marubozu yang merupakan sinyal bearish continuation namun masih di atas EMA5,10 stochastic netral dan MACD histogram divergence positif. **Target** harga beli pada level **4.340** dengan *resist* di level 4.430 kemudian 4.470.

TLKM (4.370)



Premier ETF Indonesia SOC

Rekomendasi: Buy

---Harga ditutup di atas EMA5,10 dan membentuk pola small bullish candle, stochastic overbought dan MACD histogram divergence positif. **Target** kenaikan harga pada level **750** kemudian 757 dengan *support* di level 736 *cut loss* jika break 729.

XISC (743)



Technical Corner

27 October 2022

Premier ETF SMinfra18

Rekomendasi: Buy

---Harga ditutup di atas EMA5,10 dan membentuk pola small bullish candle, stochastic netral dan MACD histogram divergence positif. **Target** kenaikan harga pada level **377** kemudian 380 dengan *support* di level 371 *cut loss* jika break 368.

XISI (374)



ETF MNC36 Likuid

Rekomendasi: Buy

---Harga ditutup di atas EMA5,10 dan membentuk pola small bullish candle, stochastic memasuki zona overbought dan MACD histogram divergence positif. **Target** kenaikan harga pada level **509** kemudian 514 dengan *support* di level 499 *cut loss* jika break 494.

XMTS (504)



Technical Corner

27 October 2022

PT INDO PREMIER SEKURITAS

Pacific Century Place 16th Floor SCBD Lot 10
Jl. Jend. Sudirman Kav. 52-53
Jakarta Selatan 12190 - Indonesia
p +62 21 5088 7200

ANALYSTS CERTIFICATION

The views expressed in this research report accurately reflect the analyst's personal views about any and all of the subject securities or issuers; and no part of the research analyst's compensation was, is, or will be, directly or indirectly, related to the specific recommendations or views expressed in the report.

DISCLAIMERS

This research is based on information obtained from sources believed to be reliable, but we do not make any representation or warranty nor accept any responsibility or liability as to its accuracy, completeness or correctness. Opinions expressed are subject to change without notice. This document is prepared for general circulation. Any recommendations contained in this document does not have regard to the specific investment objectives, financial situation and the particular needs of any specific addressee. This document is not and should not be construed as an offer or a solicitation of an offer to purchase or subscribe or sell any securities. PT. Indo Premier Sekuritas or its affiliates may seek or will seek investment banking or other business relationships with the companies in this report.

Refer to Important disclosures on the last of this report