

Technical Corner

26 October 2022

IHSG

Range: 7.015 – 7.095

---Indeks ditutup membentuk pola small bearish candle namun masih di atas EMA5,10, stochastic netral dan MACD histogram divergence positif. **Target** kenaikan indeks pada level **7.095** kemudian 7.135 dengan *support* di level 7.015 kemudian 6.975.

IHSG (7.048)

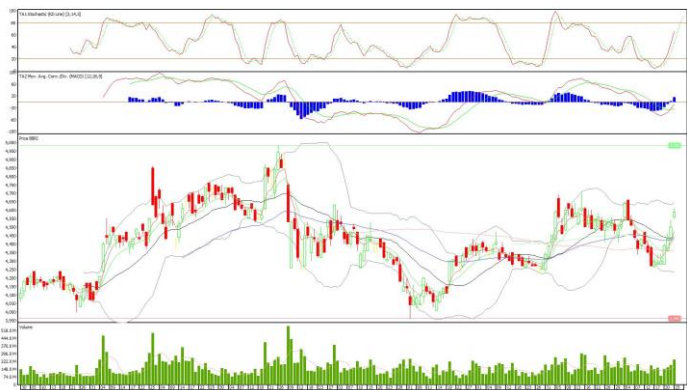


PT Bank Rakyat Indonesia, Tbk

Rekomendasi: Buy

---Harga ditutup di atas EMA5,10 dan membentuk pola small bullish candle, stochastic netral dan MACD histogram divergence positif. **Target** kenaikan harga pada level **4.640** kemudian 4.690 dengan *support* di level 4.540 *cut loss* jika break 4.390.

BBRI (4.590)



Technical Corner

26 October 2022

PT Indosat, Tbk

Rekomendasi: Buy

---Harga ditutup membentuk white opening marubozu yang merupakan sinyal bullish continuation, stochastic netral dan MACD histogram convergence negatif.

Target kenaikan harga pada level **6.750** kemudian 6.850 dengan *support* di level 6.550 *cut loss* jika break 6.450.

ISAT (6.650)



PT AKR Corporindo, Tbk

Rekomendasi: Buy on Weakness

---Harga ditutup membentuk pola long black marubozu yang merupakan sinyal bearish continuation namun masih di atas EMA50, stochastic netral dan MACD histogram divergence negatif. **Target** harga beli pada level **1.340** dengan *resist* di level 1.400 kemudian 1.415.

AKRA (1.360)



Technical Corner

26 October 2022

PT Bank Central Asia, Tbk

Rekomendasi: Buy on Weakness

---Harga ditutup membentuk pola black closing marubozu yang merupakan sinyal bearish continuation namun masih di atas EMA5,10, stochastic overbought dan MACD histogram divergence positif.

Target harga beli pada level **8.625** dengan *resist* di level 8.800 kemudian 8.900.

BBCA (8.700)



Syariah Premier ETF JII

Rekomendasi: Buy on Weakness

---Harga ditutup membentuk pola long black marubozu yang merupakan sinyal bearish continuation namun masih di atas MA20, stochastic netral dan MACD histogram convergence positif. **Target** harga beli pada level **670** dengan *resist* di level 679 kemudian 684.

XIJI (675)



Technical Corner

26 October 2022

Insight ETF FTSE LVF Index

Rekomendasi: Buy on Weakness

---Harga ditutup membentuk pola black closing marubozu yang merupakan sinyal bearish continuation namun masih di atas EMA5,10, stochastic overbought dan MACD histogram divergence positif.

Target harga beli pada level **132** dengan *resist* di level 134 kemudian 135.

XILV (133)



Pinnacle Enhanced Sharia ETF

Rekomendasi: Buy on Weakness

---Harga ditutup membentuk pola long black marubozu yang merupakan sinyal bearish continuation, stochastic netral dan MACD histogram convergence negatif.

Target harga beli pada level **469** dengan *resist* di level 475 kemudian 479.

XPES (472)



Technical Corner

26 October 2022

PT INDO PREMIER SEKURITAS

Pacific Century Place 16th Floor SCBD Lot 10
Jl. Jend. Sudirman Kav. 52-53
Jakarta Selatan 12190 - Indonesia
p +62 21 5088 7200

ANALYSTS CERTIFICATION

The views expressed in this research report accurately reflect the analyst's personal views about any and all of the subject securities or issuers; and no part of the research analyst's compensation was, is, or will be, directly or indirectly, related to the specific recommendations or views expressed in the report.

DISCLAIMERS

This research is based on information obtained from sources believed to be reliable, but we do not make any representation or warranty nor accept any responsibility or liability as to its accuracy, completeness or correctness. Opinions expressed are subject to change without notice. This document is prepared for general circulation. Any recommendations contained in this document does not have regard to the specific investment objectives, financial situation and the particular needs of any specific addressee. This document is not and should not be construed as an offer or a solicitation of an offer to purchase or subscribe or sell any securities. PT. Indo Premier Sekuritas or its affiliates may seek or will seek investment banking or other business relationships with the companies in this report.

Refer to Important disclosures on the last of this report