

# Technical Corner

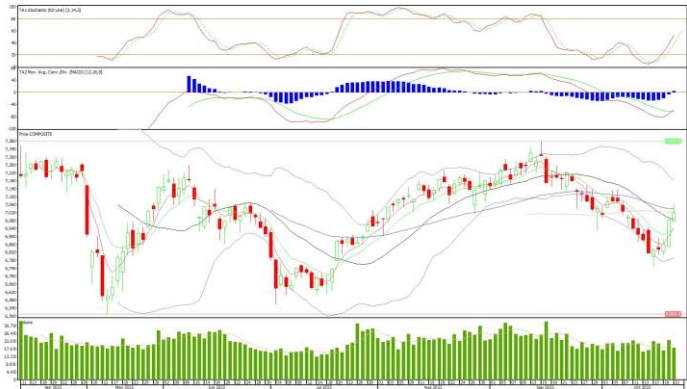
24 October 2022

## IHSG

**Range: 6.980 – 7.060**

---Indeks ditutup di atas MA20 dan membentuk pola small bullish candle, stochastic netral dan MACD bullish crossover. **Target** kenaikan indeks pada level **7.060** kemudian 7.100 dengan *support* di level 6.980 kemudian 6.940.

## IHSG (7.018)



## PT Bank Rakyat Indonesia, Tbk

**Rekomendasi: Buy**

---Harga ditutup di atas EMA5,10 dan membentuk pola white opening marubozu yang merupakan sinyal bullish continuation, stochastic memasuki zona netral dan MACD histogram convergence negatif. **Target** kenaikan harga pada level **4.470** kemudian 4.510 dengan *support* di level 4.390 *cut loss* jika break 4.350.

## BBRI (4.430)



# Technical Corner

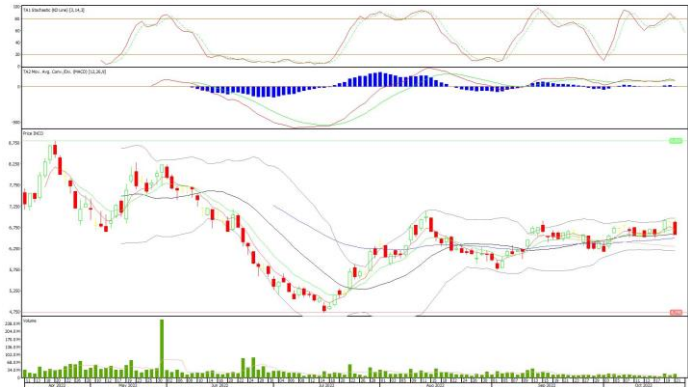
24 October 2022

## PT Vale Indonesia, Tbk

### Rekomendasi: Buy on Weakness

---Harga ditutup membentuk pola black closing marubozu yang merupakan sinyal bearish continuation, stochastic death cross dan MACD histogram convergence positif. **Target** harga beli pada level **6.500** dengan *resist* di level 6.725 kemudian 6.875.

## INCO (6.575)



## PT Perusahaan Gas Negara, Tbk

### Rekomendasi: Buy

---Harga ditutup di atas EMA5,10 dan membentuk pola white opening marubozu yang merupakan sinyal bullish continuation, stochastic netral dan MACD histogram divergence positif. **Target** kenaikan harga pada level **1.900** kemudian 1.930 dengan *support* di level 1.840 *cut loss* jika break 1.810.

## PGAS (1.870)



# Technical Corner

24 October 2022

## PT FKS Food Sejahtera, Tbk

### Rekomendasi: Buy

---Harga ditutup di atas EMA5,10 dan membentuk pola small bullish candle, stochastic memasuki zona netral dan MACD histogram divergence positif. **Target** kenaikan harga pada level **203** kemudian 209 dengan *support* di level 191 *cut loss* jika break 185.

## AISA (197)



## BNI-AM Nusantara MSCI Indo ETF

### Rekomendasi: Buy

---Harga ditutup di atas EMA5,10 dan membentuk pola long white marubozu yang merupakan sinyal bullish continuation, stochastic netral dan MACD bullish crossover. **Target** kenaikan harga pada level **1.182** kemudian 1.194 dengan *support* di level 1.158 *cut loss* jika break 1.146.

## XBNI (1.170)



# Technical Corner

24 October 2022

## Premier ETF Index IDX30

### Rekomendasi: Buy

---Harga ditutup di atas EMA5,10 dan membentuk pola long white marubozu yang merupakan sinyal bullish continuation, stochastic netral dan MACD bullish crossover. **Target** kenaikan harga pada level **561** kemudian 565 dengan *support* di level 553 *cut loss* jika break 549.

## XIID (557)



## Pinnacle Indonesia Large Cap ETF

### Rekomendasi: Buy

---Harga ditutup di atas EMA5,10 dan membentuk pola long white marubozu yang merupakan sinyal bullish continuation, stochastic netral dan MACD bullish crossover. **Target** kenaikan harga pada level **540** kemudian 545 dengan *support* di level 530 *cut loss* jika break 525.

## XPLC (535)



# Technical Corner

---

24 October 2022

## **PT INDO PREMIER SEKURITAS**

Pacific Century Place 16th Floor SCBD Lot 10  
Jl. Jend. Sudirman Kav. 52-53  
Jakarta Selatan 12190 - Indonesia  
p +62 21 5088 7200

### **ANALYSTS CERTIFICATION**

The views expressed in this research report accurately reflect the analyst's personal views about any and all of the subject securities or issuers; and no part of the research analyst's compensation was, is, or will be, directly or indirectly, related to the specific recommendations or views expressed in the report.

### **DISCLAIMERS**

This research is based on information obtained from sources believed to be reliable, but we do not make any representation or warranty nor accept any responsibility or liability as to its accuracy, completeness or correctness. Opinions expressed are subject to change without notice. This document is prepared for general circulation. Any recommendations contained in this document does not have regard to the specific investment objectives, financial situation and the particular needs of any specific addressee. This document is not and should not be construed as an offer or a solicitation of an offer to purchase or subscribe or sell any securities. PT. Indo Premier Sekuritas or its affiliates may seek or will seek investment banking or other business relationships with the companies in this report.

**Refer to Important disclosures on the last of this report**