

# Technical Corner

18 October 2022

## IHSG

**Range: 6.800 – 6.860**

---Indeks ditutup membentuk pola small bullish candle, stochastic golden cross dan MACD histogram divergence negatif.

**Target** kenaikan indeks pada level **6.860** kemudian 6.890 dengan *support* di level 6.800 kemudian 6.770.

## IHSG (6.831)



## PT Bank Central Asia, Tbk

**Rekomendasi: Buy**

---Harga ditutup membentuk pola doji yang merupakan sinyal indecision, stochastic death cross and MACD histogram convergence negatif.

**Target** kenaikan harga pada level **8.350** kemudian 8.450 dengan *support* di level 8.150 *cut loss* jika break 8.050.

## BBCA (8.250)



# Technical Corner

18 October 2022

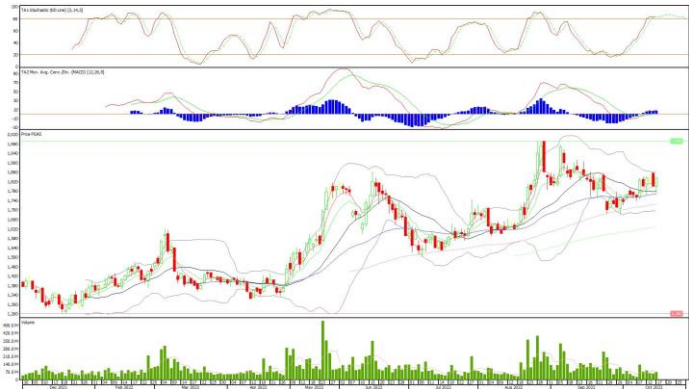
## PT Perusahaan Gas Negara, Tbk

### Rekomendasi: Buy

---Harga ditutup di atas EMA5,10 dan membentuk pola long white marubozu yang merupakan sinyal bullish continuation, stochastic death cross dan MACD histogram divergence positif.

**Target** kenaikan harga pada level **1.855** kemudian 1.875 dengan *support* di level 1.815 *cut loss* jika break 1.795.

## PGAS (1.835)



## PT Bumi Resources Minerals, Tbk

### Rekomendasi: Buy

---Harga ditutup di atas EMA5,10 dan membentuk pola white closing marubozu yang merupakan sinyal bullish continuation, stochastic netral dan MACD histogram divergence positif.

**Target** kenaikan harga pada level **181** kemudian 186 dengan *support* di level 171 *cut loss* jika break 166.

## BRMS (176)



# Technical Corner

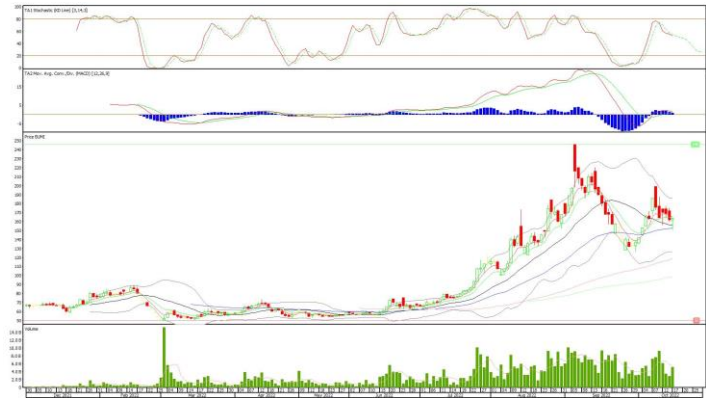
18 October 2022

## PT Bumi Resources, Tbk

### Rekomendasi: Buy

---Harga ditutup membentuk pola small bullish candle, stochastic netral dan MACD convergence negatif. **Target** kenaikan harga pada level **167** kemudian 171 dengan *support* di level 159 *cut loss* jika break 155.

## BUMI (163)



## Premier ETF LQ-45

### Rekomendasi: Buy

---Harga ditutup membentuk pola small bullish candle, stochastic golden cross dan MACD histogram convergence negatif. **Target** kenaikan harga pada level **1.073** kemudian 1.082 dengan *support* di level 1.055 *cut loss* jika break 1.046.

## R-LQ45X (1.064)



# Technical Corner

18 October 2022

## Premier ETF Indonesia SOC

### Rekomendasi: Buy

---Harga ditutup membentuk pola small bullish candle, stochastic oversold dan MACD histogram convergence negatif.

**Target** kenaikan harga pada level **733** kemudian 741 dengan *support* di level 717 *cut loss* jika break 709.

## XISC (725)



## Premier ETF SRI-KEHATI

### Rekomendasi: Buy

---Harga ditutup membentuk pola small bullish candle, stochastic oversold dan MACD histogram convergence negatif.

**Target** kenaikan harga pada level **445** kemudian 448 dengan *support* di level 439 *cut loss* jika break 436.

## XISR (442)



# Technical Corner

---

18 October 2022

## **PT INDO PREMIER SEKURITAS**

Pacific Century Place 16th Floor SCBD Lot 10  
Jl. Jend. Sudirman Kav. 52-53  
Jakarta Selatan 12190 - Indonesia  
p +62 21 5088 7200

### **ANALYSTS CERTIFICATION**

The views expressed in this research report accurately reflect the analyst's personal views about any and all of the subject securities or issuers; and no part of the research analyst's compensation was, is, or will be, directly or indirectly, related to the specific recommendations or views expressed in the report.

### **DISCLAIMERS**

This research is based on information obtained from sources believed to be reliable, but we do not make any representation or warranty nor accept any responsibility or liability as to its accuracy, completeness or correctness. Opinions expressed are subject to change without notice. This document is prepared for general circulation. Any recommendations contained in this document does not have regard to the specific investment objectives, financial situation and the particular needs of any specific addressee. This document is not and should not be construed as an offer or a solicitation of an offer to purchase or subscribe or sell any securities. PT. Indo Premier Sekuritas or its affiliates may seek or will seek investment banking or other business relationships with the companies in this report.

**Refer to Important disclosures on the last of this report**