

Technical Corner

12 October 2022

IHSG

Range: 6.890 – 6.990

---Indeks ditutup membentuk pola long black marubozu yang merupakan sinyal bearish continuation, stochastic memasuki zona overbought dan MACD histogram divergence negatif. **Target** pelemahan indeks pada level **6.890** kemudian 6.840 dengan *resist* di level 6.990 kemudian 7.040.

IHSG (6.939)



PT Bank Rakyat Indonesia, Tbk

Rekomendasi: Buy

---Harga ditutup di atas MA100 dan membentuk pola white closing marubozu yang merupakan sinyal bullish continuation, stochastic overbought dan MACD histogram convergence negatif. **Target** kenaikan harga pada level **4.470** kemudian 4.510 dengan *support* di level 4.390 *cut loss* jika break 4.350.

BBRI (4.430)



Technical Corner

12 October 2022

PT Semen Indonesia, Tbk

Rekomendasi: Buy

---Harga ditutup di atas EMA5,10 dan membentuk pola long white marubozu yang merupakan sinyal bullish continuation, stochastic golden cross dan MACD histogram convergence negatif.

Target kenaikan harga pada level **7.625** kemudian 7.725 dengan *support* di level 7.425 *cut loss* jika break 7.325.

SMGR (7.525)

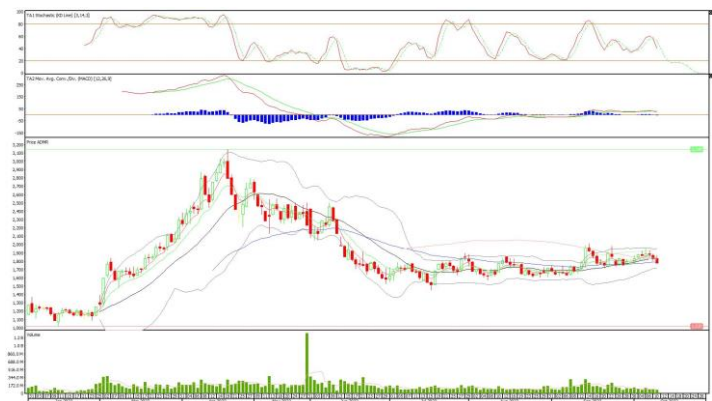


PT Adaro Minerals Indonesia, Tbk

Rekomendasi: Buy on Weakness

---Harga ditutup membentuk pola black closing marubozu yang merupakan sinyal bearish continuation, stochastic netral dan MACD bearish crossover. **Target** harga beli pada level **1.750** dengan *resist* di level 1.800 kemudian 1.830.

ADMR (1.775)



Technical Corner

12 October 2022

PT Adaro Energy Indonesia, Tbk

Rekomendasi: Buy

---Harga ditutup membentuk pola doji yang merupakan sinyal indecision, stochastic netral dan MACD histogram divergence negatif. **Target** kenaikan harga pada level **3.970** kemudian 4.010 dengan *support* di level 3.890 *cut loss* jika break 3.850.

ADRO (3.930)



Premier ETF Indonesia Consumer

Rekomendasi: Buy on Weakness

---Harga ditutup membentuk pola black opening marubozu yang merupakan sinyal bearish continuation, stochastic overbought dan MACD histogram divergence negatif. **Target** harga beli pada level **987** dengan *resist* di level 1.003 kemudian 1.009.

XIIC (993)



Technical Corner

12 October 2022

Premier ETF Pefindo i-Grade

Rekomendasi: Buy on Weakness

---Harga ditutup membentuk pola small bearish candle, stochastic memasuki zona overbought dan MACD histogram divergence negatif. **Target** harga beli pada level **202** dengan *resist* di level 206 kemudian 209.

XIPI (204)



Pinnacle Enhanced Sharia ETF

Rekomendasi: Buy on Weakness

---Harga ditutup membentuk pola small bearish candle, stochastic netral dan MACD histogram divergence negatif. **Target** harga beli pada level **470** dengan *resist* di level 477 kemudian 480.

XPES (472)



Technical Corner

12 October 2022

PT INDO PREMIER SEKURITAS

Pacific Century Place 16th Floor SCBD Lot 10
Jl. Jend. Sudirman Kav. 52-53
Jakarta Selatan 12190 - Indonesia
p +62 21 5088 7200

ANALYSTS CERTIFICATION

The views expressed in this research report accurately reflect the analyst's personal views about any and all of the subject securities or issuers; and no part of the research analyst's compensation was, is, or will be, directly or indirectly, related to the specific recommendations or views expressed in the report.

DISCLAIMERS

This research is based on information obtained from sources believed to be reliable, but we do not make any representation or warranty nor accept any responsibility or liability as to its accuracy, completeness or correctness. Opinions expressed are subject to change without notice. This document is prepared for general circulation. Any recommendations contained in this document does not have regard to the specific investment objectives, financial situation and the particular needs of any specific addressee. This document is not and should not be construed as an offer or a solicitation of an offer to purchase or subscribe or sell any securities. PT. Indo Premier Sekuritas or its affiliates may seek or will seek investment banking or other business relationships with the companies in this report.

Refer to Important disclosures on the last of this report