

# Technical Corner

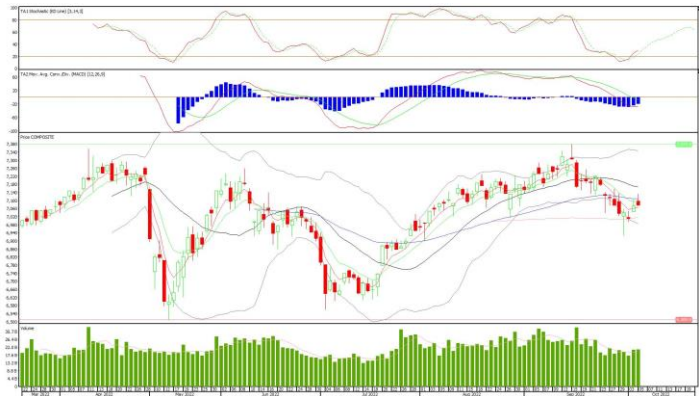
6 October 2022

## IHSG

**Range: 7.045 – 7.105**

---Indeks ditutup membentuk pola small bearish candle namun masih di atas EMA5, stochastic netral dan MACD histogram convergence negatif. **Target** kenaikan indeks pada level **7.105** kemudian 7.135 dengan *support* di level 7.045 kemudian 7.015.

## IHSG (7.075)



## PT Astra International, Tbk

**Rekomendasi: Buy on Weakness**

---Harga ditutup membentuk pola black closing marubozu yang merupakan sinyal bearish continuation, stochastic golden cross dan MACD histogram convergence negatif. **Target** harga beli pada level **6.625** dengan *resist* di level 6.825 kemudian 6.925.

## ASII (6.675)



# Technical Corner

6 October 2022

## PT Bank Central Asia, Tbk

**Rekomendasi: Buy on Weakness**

---Harga ditutup membentuk pola small bearish candle, stochastic netral dan MACD histogram convergence negatif.

**Target** harga beli pada level **8.375** dengan *resist* di level 8.575 kemudian 8.625.

## BBCA (8.450)

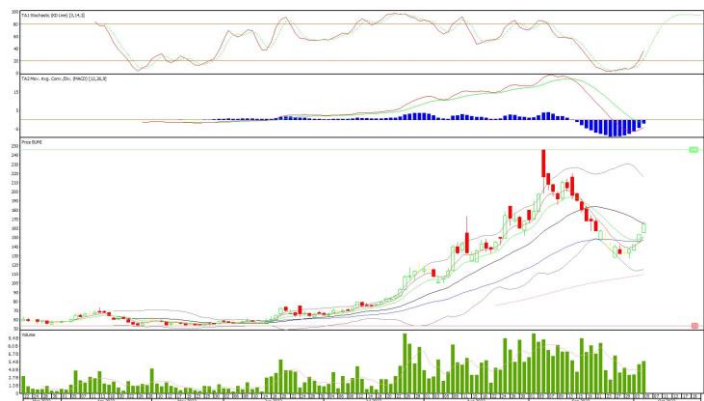


## PT Bumi Resources, Tbk

**Rekomendasi: Buy**

---Harga ditutup di atas EMA5,10 dan membentuk pola white opening marubozu yang merupakan sinyal bullish continuation, stochastic netral dan MACD histogram convergence negatif. **Target** kenaikan harga pada level **170** kemudian 175 dengan *support* di level 160 *cut loss* jika break 155.

## BUMI (165)



# Technical Corner

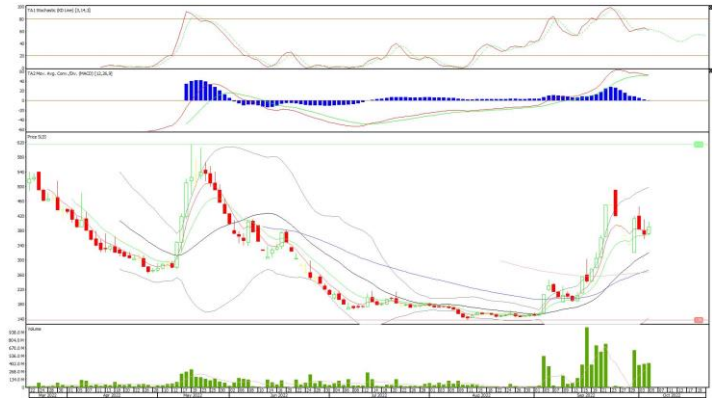
6 October 2022

## PT Gaya Abadi Sempurna, Tbk

### Rekomendasi: Buy

---Harga ditutup di atas EMA5,10 dan membentuk pola small bullish candle, stochastic death cross dan MACD bearish crossover. **Target** kenaikan harga pada level **398** kemudian 406 dengan *support* di level 382 *cut loss* jika break 374.

## SLIS (390)



## Premier ETF Indonesia Consumer

### Rekomendasi: Buy on Weakness

---Harga ditutup pola doji yang merupakan sinyal indecision, stochastic memasuki zona netral dan MACD histogram convergence negatif. **Target** harga beli pada level **1.004** dengan resist di level 1.016 kemudian 1.020.

## XIIC (1.008)



# Technical Corner

6 October 2022

## Premier ETF Pefindo i-Grade

**Rekomendasi: Buy on Weakness**

---Harga ditutup pola black closing marubozu yang merupakan sinyal bearish candle, stochastic netral dan MACD histogram divergence negatif. **Target** harga beli pada level **206** dengan resist di level 210 kemudian 212.

## XIPI (208)



## Premier ETF SRI-KEHATI

**Rekomendasi: Buy on Weakness**

---Harga ditutup pola black closing marubozu yang merupakan sinyal bearish candle, stochastic netral dan MACD histogram convergence negatif. **Target** harga beli pada level **446** dengan resist di level 456 kemudian 460.

## XISR (450)



# Technical Corner

---

6 October 2022

## **PT INDO PREMIER SEKURITAS**

Pacific Century Place 16th Floor SCBD Lot 10  
Jl. Jend. Sudirman Kav. 52-53  
Jakarta Selatan 12190 - Indonesia  
p +62 21 5088 7200

### **ANALYSTS CERTIFICATION**

The views expressed in this research report accurately reflect the analyst's personal views about any and all of the subject securities or issuers; and no part of the research analyst's compensation was, is, or will be, directly or indirectly, related to the specific recommendations or views expressed in the report.

### **DISCLAIMERS**

This research is based on information obtained from sources believed to be reliable, but we do not make any representation or warranty nor accept any responsibility or liability as to its accuracy, completeness or correctness. Opinions expressed are subject to change without notice. This document is prepared for general circulation. Any recommendations contained in this document does not have regard to the specific investment objectives, financial situation and the particular needs of any specific addressee. This document is not and should not be construed as an offer or a solicitation of an offer to purchase or subscribe or sell any securities. PT. Indo Premier Sekuritas or its affiliates may seek or will seek investment banking or other business relationships with the companies in this report.

**Refer to Important disclosures on the last of this report**