

Technical Corner

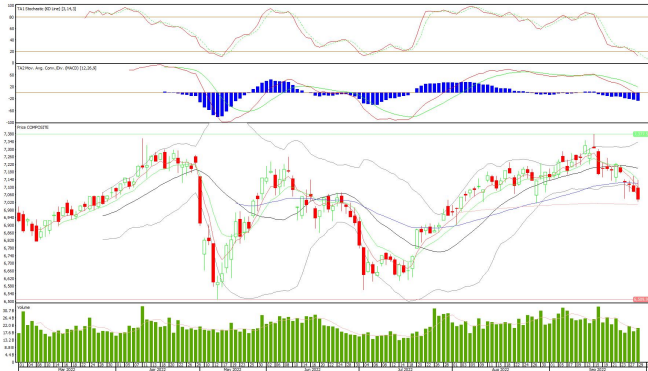
30 September 2022

IHSG

Range: 7.000 – 7.070

---Indeks ditutup membentuk pola long black marubozu yang merupakan sinyal bearish continuation, stochastic memasuki zona oversold dan MACD histogram divergence negatif. **Target** pelemahan indeks pada level **7.000** kemudian 6.965 dengan *resist* di level 7.070 kemudian 7.105.

IHSG (7.036)



PT Sarana Menara Nusantara, Tbk

Rekomendasi: Buy

---Harga ditutup di atas EMA5,10 dan membentuk pola white marubozu yang merupakan sinyal bullish continuation, stochastic netral dan MACD bullish crossover. **Target** kenaikan harga pada level **1.270** kemudian 1.290 dengan *support* di level 1.230 *cut loss* jika break 1.210.

TOWR (1.250)



Technical Corner

30 September 2022

PT Medikaloka Hermina, Tbk

Rekomendasi: Buy

---Harga ditutup di atas EMA5,10 dan membentuk pola white opening marubozu yang merupakan sinyal bullish continuation, stochastic overbought dan MACD histogram divergence positif.

Target kenaikan harga pada level **1.600** kemudian 1.625 dengan *support* di level 1.550 *cut loss* jika break 1.525.

HEAL (1.575)



PT Krida Jaringan Nusantara, Tbk

Rekomendasi: Buy

---Harga ditutup di atas EMA5,10 dan membentuk pola white closing marubozu yang merupakan sinyal bullish continuation, stochastic konsisten overbought dan MACD histogram divergence positif. **Target** kenaikan harga pada level **310** kemudian 320 dengan *support* di level 290 *cut loss* jika break 280.

KJEN (300)



Technical Corner

30 September 2022

PT Indofood CBP Sukses Makmur, Tbk

Rekomendasi: Buy

---Harga ditutup di atas EMA10 dan membentuk pola small bullish candle, stochastic netral dan MACD histogram convergence positif. **Target** kenaikan harga pada level **8.950** kemudian 9.050 dengan *support* di level 8.750 *cut loss* jika break 8.650.

ICBP (8.850)

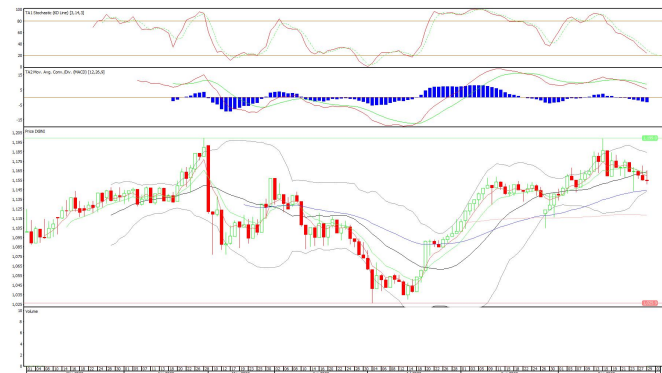


BNI-AM Nusantara MSCI Indo ETF

Rekomendasi: Buy on Weakness

---Harga ditutup di bawah EMA5,10 dan membentuk pola doji yang merupakan sinyal indecision, stochastic netral dan MACD histogram divergence negatif. **Target** harga beli pada level **1.148** dengan *resist* di level 1.163 kemudian 1.174.

XBNI (1.154)



Technical Corner

30 September 2022

Insight ETF FTSE LVF Index

Rekomendasi: Buy on Weakness

---Harga ditutup di bawah EMA5,10 dan membentuk doji yang merupakan sinyal indecision, stochastic netral dan MACD histogram divergence negatif. **Target** harga beli pada level **129** dengan *resist* di level 131 kemudian 132.

XILV (130)



Premier ETF FTSE Indonesia ESG

Rekomendasi: Buy on Weakness

---Harga ditutup di bawah EMA5,10 dan membentuk pola small bearish candle, stochastic netral dan MACD histogram divergence negatif. **Target** harga beli pada level **115** dengan *resist* di level 117 kemudian 118.

XIFE (116)



Technical Corner

30 September 2022

PT INDO PREMIER SEKURITAS

Pacific Century Place 16th Floor SCBD Lot 10
Jl. Jend. Sudirman Kav. 52-53
Jakarta Selatan 12190 - Indonesia
p +62 21 5088 7200

ANALYSTS CERTIFICATION

The views expressed in this research report accurately reflect the analyst's personal views about any and all of the subject securities or issuers; and no part of the research analyst's compensation was, is, or will be, directly or indirectly, related to the specific recommendations or views expressed in the report.

DISCLAIMERS

This research is based on information obtained from sources believed to be reliable, but we do not make any representation or warranty nor accept any responsibility or liability as to its accuracy, completeness or correctness. Opinions expressed are subject to change without notice. This document is prepared for general circulation. Any recommendations contained in this document does not have regard to the specific investment objectives, financial situation and the particular needs of any specific addressee. This document is not and should not be construed as an offer or a solicitation of an offer to purchase or subscribe or sell any securities. PT. Indo Premier Sekuritas or its affiliates may seek or will seek investment banking or other business relationships with the companies in this report.

Refer to Important disclosures on the last of this report