

# Technical Corner

27 September 2022

## IHSG

**Range: 7.080 – 7.180**

---Indeks ditutup di atas EMA50 dan membentuk pola doji yang merupakan sinyal indecision, stochastic golden cross dan MACD histogram divergence negatif.

**Target** kenaikan indeks pada level **7.180** kemudian 7.230 dengan *support* di level 7.080 kemudian 7.030.

## IHSG (7.128)



## PT Bank Rakyat Indonesia, Tbk

**Rekomendasi: Buy**

---Harga ditutup di atas EMA5,10 dan membentuk pola white closing marubozu yang merupakan sinyal bullish continuation, stochastic netral dan AMCD histogram convergence negatif. **Target** kenaikan harga pada level **4.600** kemudian 4.660 dengan *support* di level 4.480 *cut loss* jika break 4.420.

## BBRI (4.540)



# Technical Corner

27 September 2022

## PT Bank Mandiri, Tbk

### Rekomendasi: Buy

---Harga ditutup di atas EMA5,10 dan membentuk pola long white marubozu yang merupakan sinyal bullish continuation, stochastic netral dan MACD histogram divergence negatif. **Target** kenaikan harga pada level **9.375** kemudian 9.450 dengan *support* di level 9.125 *cut loss* jika break 9.000.

## BMRI (9.250)

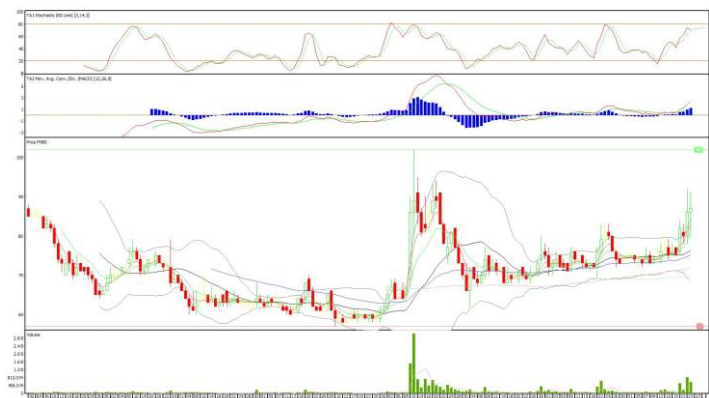


## PT Bank Panin Dubai Syariah, Tbk

### Rekomendasi: Buy

---Harga ditutup di atas EMA5,10 dan membentuk pola small bullish candle, stochastic netral dan MACD histogram divergence positif. **Target** kenaikan harga pada level **90** kemudian 93 dengan *support* di level 84 *cut loss* jika break 81.

## PNBS (87)



# Technical Corner

27 September 2022

## PT Telkom Indonesia, Tbk

### Rekomendasi: Buy

---Harga ditutup di atas EMA5 dan membentuk pola long white marubozu yang merupakan sinyal bullish continuation, stochastic memasuki zona netral dan MACD histogram convergence negatif. **Target** kenaikan harga pada level **4.520** kemudian 4.580 dengan *support* di level 4.400 *cut loss* jika break 4.340.

## TLKM (4.460)



## Premier ETF Indonesia SOC

### Rekomendasi: Buy on Weakness

---Harga ditutup membentuk pola black opening marubozu yang merupakan sinyal bearish continuation, stochastic netral dan MACD histogram divergence negatif. **Target** harga beli pada level **740** dengan *resist* di level 752 kemudian 757.

## XISC (744)



# Technical Corner

27 September 2022

## ETF MNC36 Likuid

### Rekomendasi: Buy on Weakness

---Harga ditutup membentuk pola black opening marubozu yang merupakan sinyal bearish continuation, stochastic netral dan MACD histogram divergence negatif.

**Target** harga beli pada level **503** dengan *resist* di level 511 kemudian 515.

## XMTS (506)



## Pinnacle Indonesia Large Cap ETF

### Rekomendasi: Buy on Weakness

---Harga ditutup membentuk pola white opening marubozu yang merupakan sinyal bearish continuation, stochastic netral dan MACD histogram divergence negatif.

**Target** harga beli pada level **534** dengan *resist* di level 544 kemudian 549.

## XPLC (538)



# Technical Corner

---

27 September 2022

## **PT INDO PREMIER SEKURITAS**

Pacific Century Place 16th Floor SCBD Lot 10  
Jl. Jend. Sudirman Kav. 52-53  
Jakarta Selatan 12190 - Indonesia  
p +62 21 5088 7200

### **ANALYSTS CERTIFICATION**

The views expressed in this research report accurately reflect the analyst's personal views about any and all of the subject securities or issuers; and no part of the research analyst's compensation was, is, or will be, directly or indirectly, related to the specific recommendations or views expressed in the report.

### **DISCLAIMERS**

This research is based on information obtained from sources believed to be reliable, but we do not make any representation or warranty nor accept any responsibility or liability as to its accuracy, completeness or correctness. Opinions expressed are subject to change without notice. This document is prepared for general circulation. Any recommendations contained in this document does not have regard to the specific investment objectives, financial situation and the particular needs of any specific addressee. This document is not and should not be construed as an offer or a solicitation of an offer to purchase or subscribe or sell any securities. PT. Indo Premier Sekuritas or its affiliates may seek or will seek investment banking or other business relationships with the companies in this report.

**Refer to Important disclosures on the last of this report**