

Technical Corner

22 September 2022

IHSG

Range: 7.155 – 7.225

---Indeks ditutup membentuk pola doji yang merupakan sinyal indecision, stochastic netral dan MACD histogram divergence negatif. **Target** pelemahan indeks pada level **7.155** kemudian 7.120 dengan *resist* di level 7.225 kemudian 7.260.

IHSG (7.188)



PT Aneka Tambang, Tbk

Rekomendasi: Buy

---Harga ditutup di atas EMA5,10 and membentuk pola small bullish candle, stochastic golden cross dan MACD histogram divergence positif. **Target** kenaikan harga pada level **2.130** kemudian 2.180 dengan *support* di level 2.030 *cut loss* jika break 1.980.

ANTM (2.080)



Technical Corner

22 September 2022

PT Bank Rakyat Indonesia, Tbk

Rekomendasi: Buy

---Harga ditutup di atas EMA5,10 dan membentuk pola white closing marubozu yang merupakan sinyal bullish continuation, stochastic netral dan MACD histogram divergence negatif. **Target** kenaikan harga pada level **4.620** kemudian 4.690 dengan *support* di level 4.480 *cut loss* jika break 4.410.

BBRI (4.550)

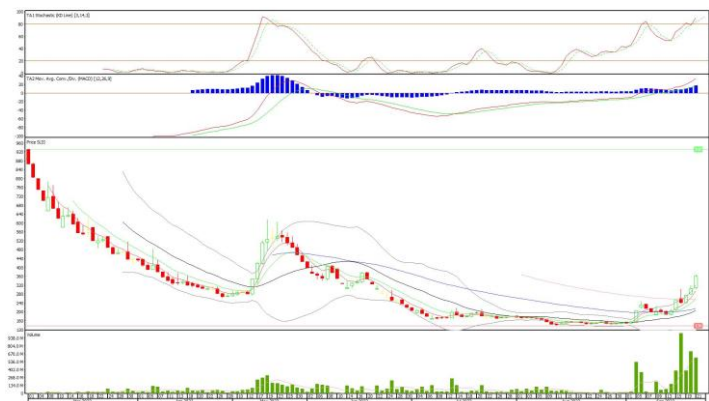


PT Gaya Abadi Sempurna, Tbk

Rekomendasi: Buy

---Harga ditutup di atas EMA5,10 dan membentuk pola long white marubozu yang merupakan sinyal bullish continuation, stochastic memasuki zona overbought dan MACD histogram divergence positif. **Target** kenaikan harga pada level **370** kemudian 380 dengan *support* di level 350 *cut loss* jika break 340.

SLIS (360)



Technical Corner

22 September 2022

PT Unilever Indonesia, Tbk

Rekomendasi: Buy

---Harga ditutup di atas EMA5,10 dan membentuk pola white opening marubozu yang merupakan sinyal bullish continuation, stochastic overbought dan MACD histogram divergence positif.

Target kenaikan harga pada level **4.880** kemudian 4.950 dengan *support* di level 4.740 *cut loss* jika break 4.670.

UNVR (4.810)



BNP Paribas IDX Growth30 ETF

Rekomendasi: Buy

---Harga ditutup di atas MA20 dan membentuk pola doji yang merupakan sinyal indecision, stochastic netral dan MACD histogram divergence negatif.

Target kenaikan harga pada level **605** kemudian 611 dengan *support* di level 593 *cut loss* jika break 587.

XBIG (599)



Technical Corner

22 September 2022

Premier ETF IDX High Dividend 20

Rekomendasi: Buy

---Harga ditutup di atas EMA10 dan membentuk pola small bullish candle, stochastic netral dan MACD histogram divergence negatif. **Target** kenaikan harga pada level **626** kemudian 632 dengan *support* di level 614 *cut loss* jika break 608.

XIHD (620)



Pinnacle Indonesia ESG ETF

Rekomendasi: Buy

---Harga ditutup di atas EMA10 dan membentuk pola small bullish candle, stochastic netral dan MACD histogram divergence negatif. **Target** kenaikan harga pada level **446** kemudian 450 dengan *support* di level 438 *cut loss* jika break 434.

XPSG (442)



Technical Corner

22 September 2022

PT INDO PREMIER SEKURITAS

Pacific Century Place 16th Floor SCBD Lot 10
Jl. Jend. Sudirman Kav. 52-53
Jakarta Selatan 12190 - Indonesia
p +62 21 5088 7200

ANALYSTS CERTIFICATION

The views expressed in this research report accurately reflect the analyst's personal views about any and all of the subject securities or issuers; and no part of the research analyst's compensation was, is, or will be, directly or indirectly, related to the specific recommendations or views expressed in the report.

DISCLAIMERS

This research is based on information obtained from sources believed to be reliable, but we do not make any representation or warranty nor accept any responsibility or liability as to its accuracy, completeness or correctness. Opinions expressed are subject to change without notice. This document is prepared for general circulation. Any recommendations contained in this document does not have regard to the specific investment objectives, financial situation and the particular needs of any specific addressee. This document is not and should not be construed as an offer or a solicitation of an offer to purchase or subscribe or sell any securities. PT. Indo Premier Sekuritas or its affiliates may seek or will seek investment banking or other business relationships with the companies in this report.

Refer to Important disclosures on the last of this report