

Technical Corner

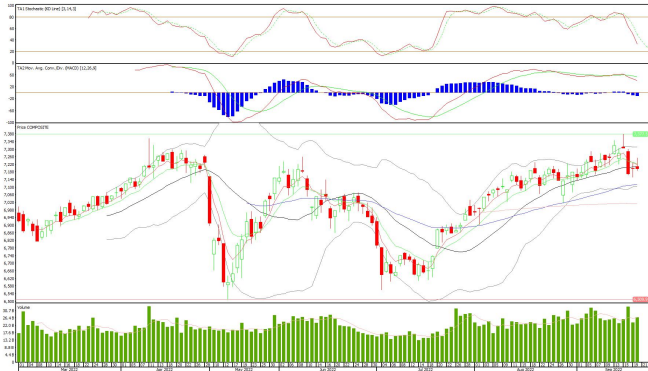
21 September 2022

IHSG

Range: 7.170 – 7.230

---Indeks ditutup membentuk pola small bearish candle, stochastic netral dan MACD histogram divergence negatif. **Target** pelemahan indeks pada level **7.170** kemudian 7.140 dengan *resist* di level 7.230 kemudian 7.260.

IHSG (7.197)



PT AKR Corporindo, Tbk

Rekomendasi: Buy

---Harga ditutup di atas EMA5,10 and membentuk pola small bullish candle, stochastic overbought dan MACD histogram divergence positif. **Target** kenaikan harga pada level **1.455** kemudian 1.485 dengan *support* di level 1.395 *cut loss* jika break 1.365.

AKRA (1.425)



Technical Corner

21 September 2022

PT Semen Indonesia, Tbk

Rekomendasi: Buy

---Harga ditutup di atas EMA5,10 dan membentuk pola long white marubozu yang merupakan sinyal bullish continuation, stochastic overbought dan MACD histogram divergence positif.

Target kenaikan harga pada level **7.300** kemudian 7.400 dengan *support* di level 7.100 *cut loss* jika break 7.000.

SMGR (7.200)



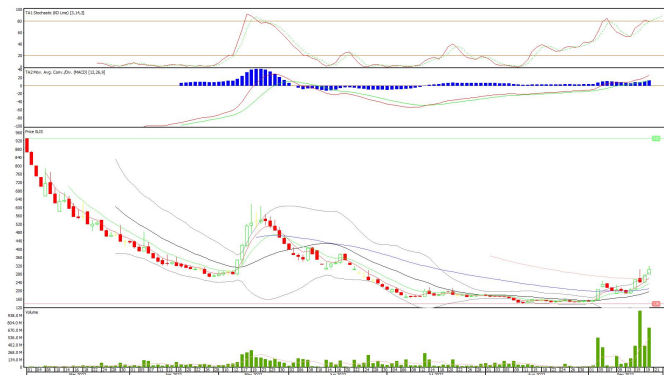
PT Gaya Abadi Sempurna, Tbk

Rekomendasi: Buy

---Harga ditutup di atas EMA5,10 dan membentuk pola long white marubozu yang merupakan sinyal bullish continuation, stochastic memasuki zona netral dan MACD histogram divergence positif.

Target kenaikan harga pada level **314** kemudian 324 dengan *support* di level 294 *cut loss* jika break 284.

SLIS (304)



Technical Corner

21 September 2022

PT Adaro Minerals Indonesia, Tbk

Rekomendasi: Buy on Weakness

---Harga ditutup membentuk pola doji yang merupakan sinyal indecision, stochastic netral dan MACD histogram convergence positif. **Target** harga beli pada level **1.750** dengan *resist* di level 1.810 *cut loss* jika break 1.850.

ADMR (1.775)

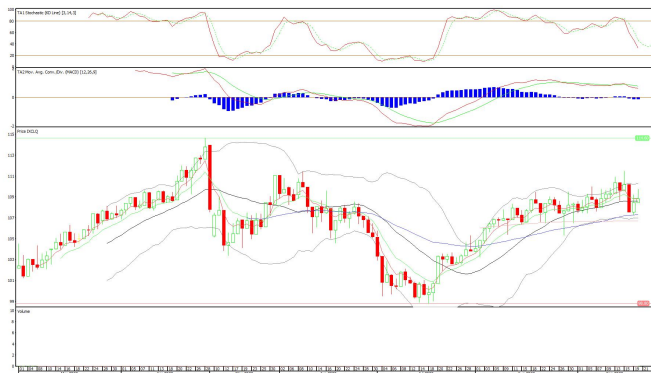


Cipta ETF Index LQ45

Rekomendasi: Buy

---Harga ditutup di atas MA20 dan membentuk pola small bullish candle, stochastic netral dan MACD histogram convergence negatif. **Target** kenaikan harga pada level **110** kemudian 111 dengan *support* di level 108 *cut loss* jika break 107.

XCLQ (109)



Technical Corner

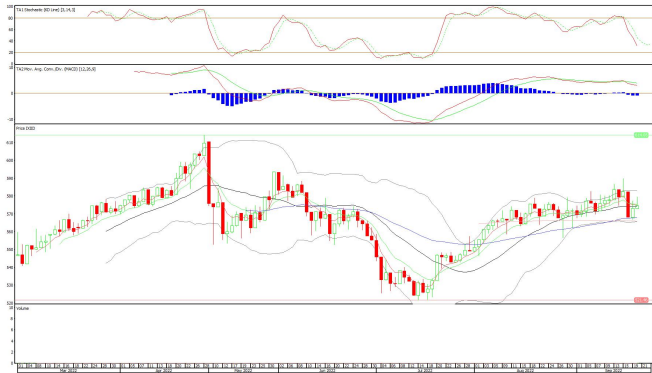
21 September 2022

Premier ETF Index IDX30

Rekomendasi: Buy

---Harga ditutup di atas MA20 dan membentuk pola small bullish candle, stochastic netral dan MACD histogram convergence negatif. **Target** kenaikan harga pada level **580** kemudian 586 dengan *support* di level 568 *cut loss* jika break 562.

XIID (574)

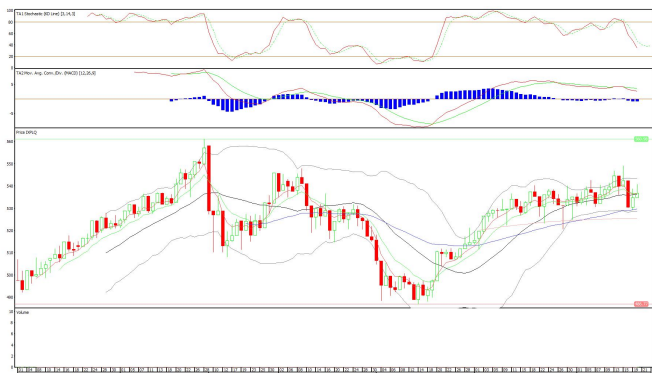


Pinnacle Enchanced Liquid ETF

Rekomendasi: Buy

---Harga ditutup di atas EMA5,10 dan membentuk pola small bullish candle, stochastic netral dan MACD histogram convergence negatif. **Target** kenaikan harga pada level **542** kemudian 547 dengan *support* di level 532 *cut loss* jika break 527.

XPLQ (537)



Technical Corner

21 September 2022

PT INDO PREMIER SEKURITAS

Pacific Century Place 16th Floor SCBD Lot 10
Jl. Jend. Sudirman Kav. 52-53
Jakarta Selatan 12190 - Indonesia
p +62 21 5088 7200

ANALYSTS CERTIFICATION

The views expressed in this research report accurately reflect the analyst's personal views about any and all of the subject securities or issuers; and no part of the research analyst's compensation was, is, or will be, directly or indirectly, related to the specific recommendations or views expressed in the report.

DISCLAIMERS

This research is based on information obtained from sources believed to be reliable, but we do not make any representation or warranty nor accept any responsibility or liability as to its accuracy, completeness or correctness. Opinions expressed are subject to change without notice. This document is prepared for general circulation. Any recommendations contained in this document does not have regard to the specific investment objectives, financial situation and the particular needs of any specific addressee. This document is not and should not be construed as an offer or a solicitation of an offer to purchase or subscribe or sell any securities. PT. Indo Premier Sekuritas or its affiliates may seek or will seek investment banking or other business relationships with the companies in this report.

Refer to Important disclosures on the last of this report