

Technical Corner

12 September 2022

IHSG

Range: 7.210 – 7.280

---Indeks ditutup di atas EMA5,10 dan membentuk pola small bearish candle, stochastic netral dan MACD histogram convergence negatif. **Target** kenaikan indeks pada level **7.280** kemudian 7.315 dengan *support* di level 7.210 kemudian 7.175.

IHSG (7.243)



PT Adaro Energy Indonesia, Tbk

Rekomendasi: Buy

---Harga ditutup di atas EMA5,10 dan membentuk pola small bullish candle, stochastic konsisten overbought dan MACD histogram convergence positif. **Target** kenaikan harga pada level **4.010** kemudian 4.070 dengan *support* di level 3.890 *cut loss* jika break 3.830.

ADRO (3.950)



Technical Corner

12 September 2022

PT Telkom Indonesia, Tbk

Rekomendasi: Buy

---Harga ditutup di atas EMA5,10 dan membentuk pola white closing marubozu yang merupakan sinyal bullish continuation, stochastic golden cross dan MACD histogram convergence negatif.

Target kenaikan harga pada level **4.650** kemudian 4.700 dengan *support* di level 4.550 *cut loss* jika break 4.500.

TLKM (4.600)



PT Harum Energy, Tbk

Rekomendasi: Buy

---Harga ditutup di atas EMA5,10 dan membentuk pola white closing marubozu yang merupakan sinyal bullish continuation, stochastic netral dan MACD histogram divergence positif.

Target kenaikan harga pada level **1.870** kemudian 1.910 dengan *support* di level 1.790 *cut loss* jika break 1.750.

HRUM (1.830)



Technical Corner

12 September 2022

PT Perusahaan Gas Negara, Tbk

Rekomendasi: Buy on Weakness

---Harga ditutup membentuk pola black opening marubozu yang merupakan sinyal bearish continuation namun masih di atas MA20, stochastic death cross dan MACD histogram convergence positif. **Target** harga beli pada level **1.820** dengan *resist* di level 1.870 kemudian 1.900.

PGAS (1.840)



Cipta ETF Index LQ45

Rekomendasi: Buy

---Harga ditutup di atas EMA5,10 dan membentuk pola small bullish candle, stochastic netral dan MACD histogram convergence negatif. **Target** kenaikan harga pada level **110** kemudian 111 dengan *support* di level 108 *cut loss* jika break 107.

XCLQ (109)



Technical Corner

12 September 2022

Premier ETF FTSE Indonesia ESG

Rekomendasi: Buy

---Harga ditutup di atas EMA5,10 dan membentuk pola small bullish candle, stochastic memasuki zona overbought dan MACD histogram divergence positif.

Target kenaikan harga pada level **119** kemudian 120 dengan *support* di level 117 *cut loss* jika break 116.

XIFE (118)

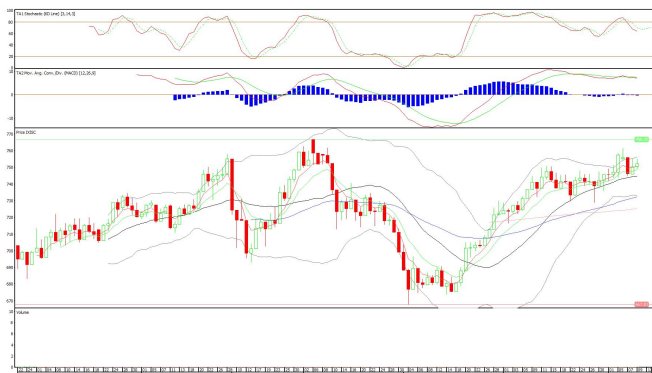


XISC (752)

Premier ETF Indonesia SOC

Rekomendasi: Buy

---Harga ditutup di atas EMA5,10 dan membentuk pola small bullish candle, stochastic netral dan MACD histogram convergence negatif. **Target** kenaikan harga pada level **758** kemudian 764 dengan *support* di level 746 *cut loss* jika break 740.



Technical Corner

12 September 2022

PT INDO PREMIER SEKURITAS

Pacific Century Place 16th Floor SCBD Lot 10
Jl. Jend. Sudirman Kav. 52-53
Jakarta Selatan 12190 - Indonesia
p +62 21 5088 7200

ANALYSTS CERTIFICATION

The views expressed in this research report accurately reflect the analyst's personal views about any and all of the subject securities or issuers; and no part of the research analyst's compensation was, is, or will be, directly or indirectly, related to the specific recommendations or views expressed in the report.

DISCLAIMERS

This research is based on information obtained from sources believed to be reliable, but we do not make any representation or warranty nor accept any responsibility or liability as to its accuracy, completeness or correctness. Opinions expressed are subject to change without notice. This document is prepared for general circulation. Any recommendations contained in this document does not have regard to the specific investment objectives, financial situation and the particular needs of any specific addressee. This document is not and should not be construed as an offer or a solicitation of an offer to purchase or subscribe or sell any securities. PT. Indo Premier Sekuritas or its affiliates may seek or will seek investment banking or other business relationships with the companies in this report.

Refer to Important disclosures on the last of this report