

Technical Corner

9 September 2022

IHSG

Range: 7.200 – 7.260

---Indeks ditutup di atas EMA5,10 dan membentuk pola white opening marubozu yang merupakan sinyal bullish continuation, stochastic netral dan MACD histogram convergence negatif. **Target** kenaikan indeks pada level **7.260** kemudian 7.290 dengan *resist* di level 7.200 kemudian 7.170.

IHSG (7.232)



PT Adaro Minerals Indonesia, Tbk

Rekomendasi: Buy

---Harga ditutup di atas EMA5,10 dan membentuk pola long white marubozu yang merupakan sinyal bullish continuation, stochastic netral dan MACD histogram divergence positif. **Target** kenaikan harga pada level **1.765** kemudian 1.805 dengan *support* di level 1.685 *cut loss* jika break 1.645.

ADMR (1.725)



Technical Corner

9 September 2022

PT GoTo Gojek Tokopedia, Tbk

Rekomendasi: Buy

---Harga ditutup membentuk pola doji yang merupakan sinyal indecision, stochastic oversold dan MACD histogram convergence negatif. **Target** kenaikan harga pada level **294** kemudian 302 dengan *support* di level 278 *cut loss* jika break 270.

GOTO (286)



PT Adaro Energy Indonesia, Tbk

Rekomendasi: Buy on Weakness

---Harga ditutup membentuk pola small bearish candle namun masih di atas EMA5,10, stochastic konsisten overbought dan MACD histogram convergence positif. **Target** harga beli pada level **3.900** dengan *resist* di level 4.000 kemudian 4.050.

ADRO (3.940)



Technical Corner

9 September 2022

PT Bumi Resources, Tbk

Rekomendasi: Buy on Weakness

---Harga ditutup membentuk pola black opening marubozu yang merupakan sinyal indecision namun masih di atas EMA5,10, stochastic netral dan MACD histogram convergence positif. **Target** harga beli pada level **197** dengan *resist* di level 208 kemudian 216.

BUMI (200)



Premier ETF Indonesia Financial

Rekomendasi: Buy

---Harga ditutup di atas EMA5,10 dan membentuk pola white opening marubozu yang merupakan sinyal bullish continuation, stochastic netral dan MACD histogram convergence negatif. **Target** kenaikan harga pada level **552** kemudian 556 dengan *support* di level 544 *cut loss* jika break 540.

XIIF (548)



Technical Corner

9 September 2022

Premier ETF MSCI Indonesia Large Cap

Rekomendasi: Buy

---Harga ditutup di atas EMA5,10 dan membentuk pola white opening marubozu yang merupakan sinyal bullish continuation, stochastic netral dan MACD histogram convergence negatif. **Target** kenaikan harga pada level **286** kemudian 289 dengan *support* di level 280 *cut loss* jika break 273.

XIML (283)

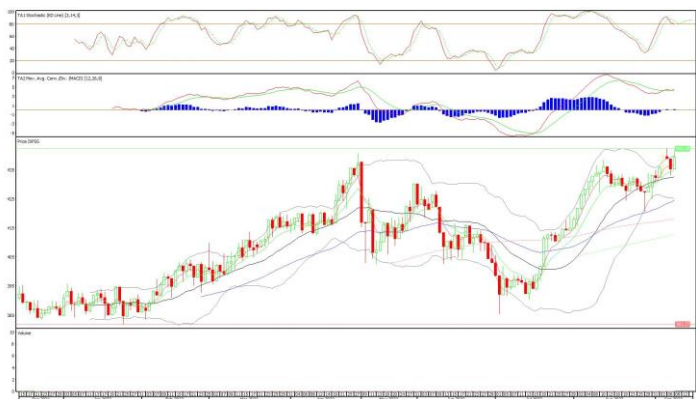


Pinnacle Indonesia ESG ETF

Rekomendasi: Buy

---Harga ditutup di atas EMA5,10 dan membentuk pola white opening marubozu yang merupakan sinyal bullish continuation, stochastic konsisten overbought dan MACD histogram divergence positif. **Target** kenaikan harga pada level **443** kemudian 447 dengan *support* di level 435 *cut loss* jika break 431.

XPSG (439)



Technical Corner

9 September 2022

PT INDO PREMIER SEKURITAS

Pacific Century Place 16th Floor SCBD Lot 10
Jl. Jend. Sudirman Kav. 52-53
Jakarta Selatan 12190 - Indonesia
p +62 21 5088 7200

ANALYSTS CERTIFICATION

The views expressed in this research report accurately reflect the analyst's personal views about any and all of the subject securities or issuers; and no part of the research analyst's compensation was, is, or will be, directly or indirectly, related to the specific recommendations or views expressed in the report.

DISCLAIMERS

This research is based on information obtained from sources believed to be reliable, but we do not make any representation or warranty nor accept any responsibility or liability as to its accuracy, completeness or correctness. Opinions expressed are subject to change without notice. This document is prepared for general circulation. Any recommendations contained in this document does not have regard to the specific investment objectives, financial situation and the particular needs of any specific addressee. This document is not and should not be construed as an offer or a solicitation of an offer to purchase or subscribe or sell any securities. PT. Indo Premier Sekuritas or its affiliates may seek or will seek investment banking or other business relationships with the companies in this report.

Refer to Important disclosures on the last of this report