

Technical Corner

18 August 2022

IHSG

Range: 7.100 – 7.170

---Indeks ditutup di atas EMA5,10 dan membentuk pola small bullish candle, stochastic konsisten overbought dan MACD histogram convergence positif.

Target kenaikan indeks pada level **7.170** kemudian 7.205 dengan *support* di level 7.100 kemudian 7.065.

IHSG (7.134)

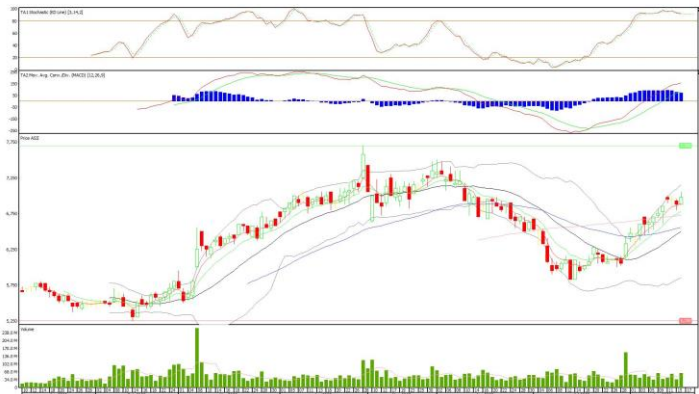


PT Astra International, Tbk

Rekomendasi: Buy

---Harga ditutup di atas EMA5,10 dan membentuk pola white opening marubozu yang merupakan sinyal bullish continuation, stochastic konsisten overbought dan MACD histogram convergence positif. **Target** kenaikan harga pada level **7.050** kemudian 7.125 dengan *support* di level 6.900 *cut loss* jika break 6.825.

ASII (6.975)



Technical Corner

18 August 2022

PT Bank Negara Indonesia, Tbk

Rekomendasi: Buy

---Harga ditutup di atas EMA5,10 dan membentuk pola small bullish candle, stochastic overbought dan MACD histogram convergence positif. **Target** kenaikan harga pada level **8.675** kemudian 8.775 dengan *support* di level 8.475 *cut loss* jika break 8.375.

BBNI (8.575)



PT Bukit Asam, Tbk

Rekomendasi: Buy on Weakness

---Harga ditutup membentuk pola long black marubozu yang merupakan sinyal bearish continuation namun masih di atas EMA50, stochastic netral dan MACD histogram divergence negatif. **Target** harga beli pada level **4.050** dengan *resist* di level 4.130 kemudian 4.180.

PTBA (4.080)



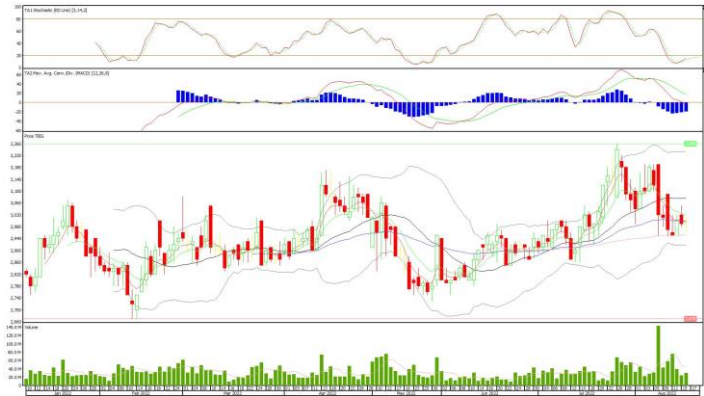
Technical Corner

18 August 2022

PT Tower Bersama Infrastructure, Tbk Rekomendasi: Buy on Weakness

---Harga ditutup membentuk pola doji yang merupakan sinyal indecision, stochastic oversold dan MACD histogram convergence negatif. **Target** harga beli pada level **2.960** dengan *resist* di level 3.050 kemudian 3.110.

TBIG (2.990)



Cipta ETF Index LQ45 Rekomendasi: Buy

---Harga ditutup di atas EMA5,10 dan membentuk pola long white marubozu yang merupakan sinyal bullish continuation, stochastic overbought dan MACD histogram convergence positif. **Target** kenaikan harga pada level **109** kemudian 110 dengan *support* di level 107 *cut loss* jika break 106.

XCLQ (108)



Technical Corner

18 August 2022

Premier ETF Indonesia Consumer

Rekomendasi: Buy

---Harga ditutup di atas EMA5,10 dan membentuk pola long white marubozu yang merupakan sinyal bullish continuation, stochastic overbought dan MACD histogram convergence positif.

Target kenaikan harga pada level **1.020** kemudian 1.028 dengan *support* di level 1.004 *cut loss* jika break 996.

XIIC (1.012)



Pinnacle Enhanced Liquid ETF

Rekomendasi: Buy

---Harga ditutup di atas EMA5,10 dan membentuk pola long white marubozu yang merupakan sinyal bullish continuation, stochastic overbought dan MACD histogram convergence positif.

Target kenaikan harga pada level **538** kemudian 543 dengan *support* di level 528 *cut loss* jika break 523.

XPLQ (533)



Technical Corner

18 August 2022

PT INDO PREMIER SEKURITAS

Pacific Century Place 16th Floor SCBD Lot 10
Jl. Jend. Sudirman Kav. 52-53
Jakarta Selatan 12190 - Indonesia
p +62 21 5088 7200

ANALYSTS CERTIFICATION

The views expressed in this research report accurately reflect the analyst's personal views about any and all of the subject securities or issuers; and no part of the research analyst's compensation was, is, or will be, directly or indirectly, related to the specific recommendations or views expressed in the report.

DISCLAIMERS

This research is based on information obtained from sources believed to be reliable, but we do not make any representation or warranty nor accept any responsibility or liability as to its accuracy, completeness or correctness. Opinions expressed are subject to change without notice. This document is prepared for general circulation. Any recommendations contained in this document does not have regard to the specific investment objectives, financial situation and the particular needs of any specific addressee. This document is not and should not be construed as an offer or a solicitation of an offer to purchase or subscribe or sell any securities. PT. Indo Premier Sekuritas or its affiliates may seek or will seek investment banking or other business relationships with the companies in this report.

Refer to Important disclosures on the last of this report