

Technical Corner

9 August 2022

IHSG

Range: 7.050 – 7.130

---Indeks ditutup di atas EMA5,10 dan membentuk pola small bearish candle, stochastic konsisten overbought dan MACD histogram convergence positif.

Target kenaikan indeks pada level **7.130** kemudian 7.170 dengan *support* di level 7.050 kemudian 7.010.

IHSG (7.087)



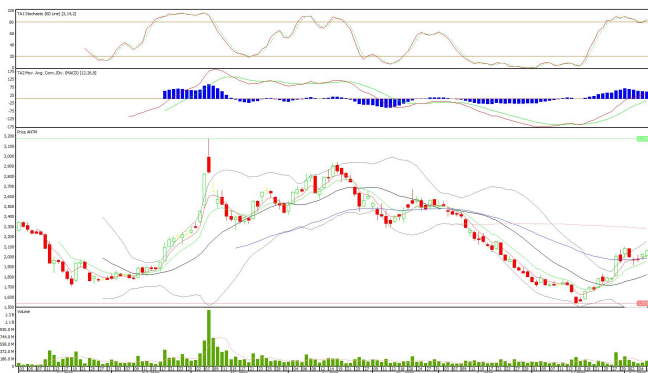
PT Aneka Tambang, Tbk

Rekomendasi: Buy

---Harga ditutup di atas EMA5,10 dan membentuk pola long white marubozu yang merupakan sinyal bullish continuation, stochastic overbought dan MACD histogram convergence positif.

Target kenaikan harga pada level **2.110** kemudian 2.160 dengan *support* di level 2.010 *cut loss* jika break 1.960.

ANTM (2.060)



Technical Corner

9 August 2022

PT Vale Indonesia, Tbk

Rekomendasi: Buy

---Harga ditutup di atas EMA5,10 dan membentuk pola white closing marubozu yang merupakan sinyal bullish continuation, stochastic overbought dan MACD histogram divergence positif.

Target kenaikan harga pada level **6.425** kemudian 6.525 dengan *support* di level 6.225 *cut loss* jika break 6.125.

INCO (6.325)



PT Ciputra Development, Tbk

Rekomendasi: Buy on Weakness

---Harga ditutup membentuk pola doji yang merupakan sinyal indecision namun masih di atas EMA5,10, stochastic netral dan MACD histogram convergence positif.

Target harga beli pada level **910** dengan *resist* di level 935 kemudian 950.

CTRA (920)



Technical Corner

9 August 2022

PT Bukit Asam, Tbk

Rekomendasi: Buy on Weakness

---Harga ditutup membentuk pola black opening marubozu yang merupakan sinyal bearish continuation namun masih di atas EMA50, stochastic netral dan MACD histogram bearish crossover. **Target** harga beli pada level **4.000** dengan *resist* di level 4.100 kemudian 4.150.

PTBA (4.040)



Batavia Smart Liquid ETF

Rekomendasi: Buy

---Harga ditutup di atas EMA5,10 dan membentuk pola small bullish candle, stochastic konsisten overbought dan MACD histogram convergence positif. **Target** kenaikan harga pada level **520** kemudian 525 dengan *support* di level 510 *cut loss* jika break 505.

XBLQ (515)



Technical Corner

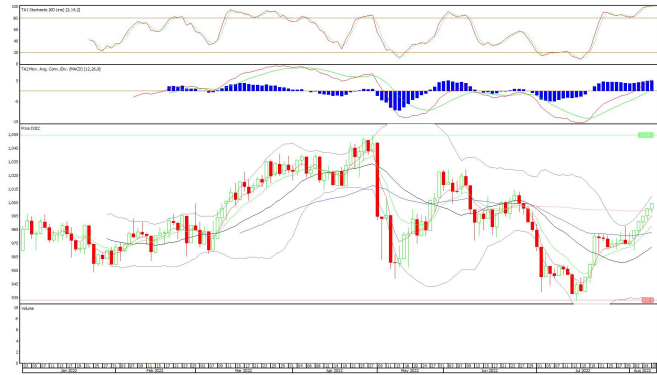
9 August 2022

Premier ETF Indonesia Consumer

Rekomendasi: Buy

---Harga ditutup di atas EMA5,10 dan membentuk pola white closing marubozu yang merupakan sinyal bullish continuation, stochastic konsisten overbought dan MACD histogram divergence positif. **Target** kenaikan harga pada level **1.011** kemudian 1.018 dengan *support* di level 997 *cut loss* jika break 990.

XIIC (1.004)

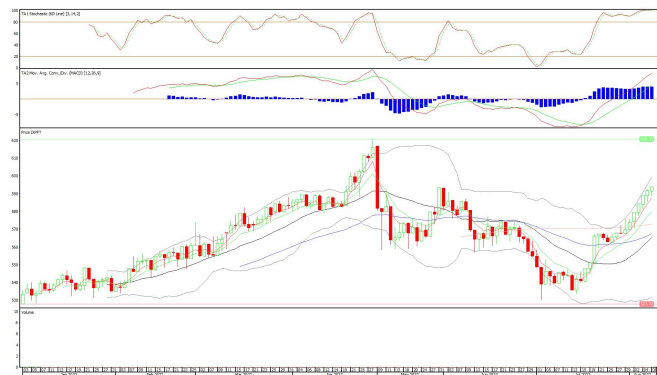


Pinnacle FTSE Indonesia ETF

Rekomendasi: Buy

---Harga ditutup di atas EMA5,10 dan membentuk pola white closing marubozu yang merupakan sinyal bullish continuation, stochastic konsisten overbought dan MACD histogram divergence positif. **Target** kenaikan harga pada level **599** kemudian 604 dengan *support* di level 589 *cut loss* jika break 584.

XPFT (594)



Technical Corner

9 August 2022

PT INDO PREMIER SEKURITAS

Pacific Century Place 16th Floor SCBD Lot 10
Jl. Jend. Sudirman Kav. 52-53
Jakarta Selatan 12190 - Indonesia
p +62 21 5088 7200

ANALYSTS CERTIFICATION

The views expressed in this research report accurately reflect the analyst's personal views about any and all of the subject securities or issuers; and no part of the research analyst's compensation was, is, or will be, directly or indirectly, related to the specific recommendations or views expressed in the report.

DISCLAIMERS

This research is based on information obtained from sources believed to be reliable, but we do not make any representation or warranty nor accept any responsibility or liability as to its accuracy, completeness or correctness. Opinions expressed are subject to change without notice. This document is prepared for general circulation. Any recommendations contained in this document does not have regard to the specific investment objectives, financial situation and the particular needs of any specific addressee. This document is not and should not be construed as an offer or a solicitation of an offer to purchase or subscribe or sell any securities. PT. Indo Premier Sekuritas or its affiliates may seek or will seek investment banking or other business relationships with the companies in this report.

Refer to Important disclosures on the last of this report