

# Technical Corner

4 August 2022

## IHSG

**Range: 6.985 – 7.105**

---Indeks ditutup di atas EMA5,10 dan membentuk pola white closing marozu yang merupakan sinyal bullish continuation, stochastic konsisten overbought dan MACD histogram divergence positif. **Target** kenaikan indeks pada level **7.105** kemudian 7.165 dengan *support* di level 6.985 kemudian 6.925.

## IHSG (7.047)



## PT Astra International, Tbk

**Rekomendasi: Buy**

---Harga ditutup di atas EMA5,10 dan membentuk pola white closing marubozu yang merupakan sinyal bullish continuation, stochastic overbought dan MACD histogram divergence positif. **Target** kenaikan harga pada level **6.700** kemudian 6.800 dengan *support* di level 6.500 *cut loss* jika break 6.400.

## ASII (6.600)



# Technical Corner

4 August 2022

## PT Daya Mitra Telekomunikasi, Tbk

### Rekomendasi: Buy

---Harga ditutup di atas EMA5,10 dan membentuk pola white closing marubozu yang merupakan sinyal bullish continuation, stochastic netral dan MACD histogram divergence positif. **Target** kenaikan harga pada level **780** kemudian 790 dengan *support* di level 760 *cut loss* jika break 750.

## MTEL (770)

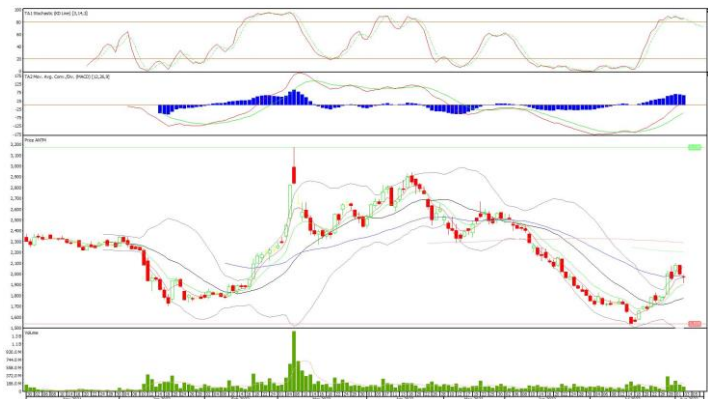


## PT Aneka Tambang, Tbk

### Rekomendasi: Buy on Weakness

---Harga ditutup membentuk pola doji yang merupakan sinyal indecision namun masih di atas EMA5,10, stochastic konsisten overbought dan MACD histogram convergence positif. **Target** harga beli pada level **1.940** dengan *resist* di level 2.030 kemudian 2.080.

## ANTM (1.970)



# Technical Corner

4 August 2022

## PT PP London Sumatra Indonesia, Tbk

**Rekomendasi: Buy on Weakness**

---Harga ditutup membentuk pola small bearish candle namun masih di atas MA20, stochastic netral dan MACD histogram convergence positif. **Target** harga beli pada level **1.200** dengan *resist* di level 1.240 kemudian 1.275.

## LSIP (1.210)



## Premier ETF Indonesia Financial

**Rekomendasi: Buy**

---Harga ditutup di atas EMA5,10 dan membentuk pola white closing marubozu yang merupakan sinyal bullish continuation, stochastic konsisten overbought dan MACD histogram divergence positif. **Target** kenaikan harga pada level **535** kemudian 541 dengan *support* di level 523 *cut loss* jika break 517.

## XIIF (529)



# Technical Corner

4 August 2022

## Premier ETF SMinfra18

### Rekomendasi: Buy

---Harga ditutup di atas EMA5,10 dan membentuk pola long white marubozu yang merupakan sinyal bullish continuation, stochastic konsisten overbought dan MACD histogram divergence positif. **Target** kenaikan harga pada level **371** kemudian 374 dengan *support* di level 365 *cut loss* jika break 362.

## XISI (368)



## Pinnacle Enhanced Liquid ETF

### Rekomendasi: Buy

---Harga ditutup di atas EMA5,10 dan membentuk pola white closing marubozu yang merupakan sinyal bullish continuation, stochastic konsisten overbought dan MACD histogram divergence positif. **Target** kenaikan harga pada level **532** kemudian 538 dengan *support* di level 520 *cut loss* jika break 514.

## XPLQ (526)



# Technical Corner

---

4 August 2022

## **PT INDO PREMIER SEKURITAS**

Pacific Century Place 16th Floor SCBD Lot 10  
Jl. Jend. Sudirman Kav. 52-53  
Jakarta Selatan 12190 - Indonesia  
p +62 21 5088 7200

### **ANALYSTS CERTIFICATION**

The views expressed in this research report accurately reflect the analyst's personal views about any and all of the subject securities or issuers; and no part of the research analyst's compensation was, is, or will be, directly or indirectly, related to the specific recommendations or views expressed in the report.

### **DISCLAIMERS**

This research is based on information obtained from sources believed to be reliable, but we do not make any representation or warranty nor accept any responsibility or liability as to its accuracy, completeness or correctness. Opinions expressed are subject to change without notice. This document is prepared for general circulation. Any recommendations contained in this document does not have regard to the specific investment objectives, financial situation and the particular needs of any specific addressee. This document is not and should not be construed as an offer or a solicitation of an offer to purchase or subscribe or sell any securities. PT. Indo Premier Sekuritas or its affiliates may seek or will seek investment banking or other business relationships with the companies in this report.

**Refer to Important disclosures on the last of this report**