

Technical Corner

21 July 2022

IHSG

Range: 6.825 – 6.925

---Indeks ditutup di atas EMA5,10 dan membentuk pola white opening marubozu yang merupakan sinyal bullish continuation, stochastic netral dan MACD histogram divergence positif. **Target** kenaikan indeks pada level **6.925** kemudian 6.975 dengan *support* di level 6.825 kemudian 6.775.

IHSG (6.875)



PT Astra Agro Lestari, Tbk

Rekomendasi: Buy

---Harga ditutup di atas EMA5,10 dan membentuk pola doji yang merupakan sinyal indecision, stochastic netral dan MACD histogram divergence positif. **Target** kenaikan harga pada level **9.600** kemudian 9.700 dengan *support* di level 9.400 *cut loss* jika break 9.300.

AALI (9.500)



Technical Corner

21 July 2022

PT Adaro Energy Indonesia, Tbk

Rekomendasi: Buy

---Harga ditutup dia tas EMA5,10 dan mmbentuk small bullish candle, stochastic golden cross dan MACD histogram divergence positif. **Target** kenaikan harga pada level **3.060** kemudian 3.100 dengan *support* di level 2.980 *cut loss* jika break 2.940.

ADRO (3.020)



PT Bank Negara Indonesia, Tbk

Rekomendasi: Buy

---Harga ditutup di atas EMA5,10 dan membentuk pola long white marubozu yang merupakan sinyal bullish continuation, stochastic memasuki zona netral dan MACD bullish crossover. **Target** kenaikan harga pada level **7.800** kemudian 7.925 dengan *support* di level 7.550 *cut loss* jika break 7.425.

BBNI (7.675)



Technical Corner

21 July 2022

PT Sarana Menara Nusantara, Tbk

Rekomendasi: Buy on Weakness

---Harga ditutup membentuk pola small bearish candle namun masih di atas EMA10, stochastic netral dan MACD bearish crossover. **Target** harga beli pada level **1.130** dengan *resist* di level 1.155 kemudian 1.175.

TOWR (1.140)



Syariah Premier ETF JII

Rekomendasi: Buy

---Harga ditutup di atas EMA5,10 dan membentuk pola white opening marubozu yang merupakan sinyal bullish continuation, stochastic memasuki zona overbought dan MACD histogram divergence positif. **Target** kenaikan harga pada level **662** kemudian 671 dengan *support* di level 644 *cut loss* jika break 635.

XIJI (653)



Technical Corner

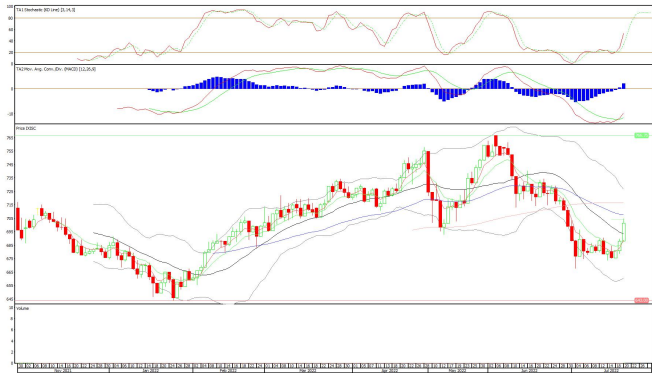
21 July 2022

Premier ETF Indonesia SOC

Rekomendasi: Buy

--- Harga ditutup di atas EMA5,10 dan membentuk pola white opening marubozu, stochastic netral dan MACD histogram divergence positif. **Target** kenaikan harga pada level **708** kemudian 715 dengan *support* di level 694 *cut loss* jika break 687.

XISC (701)



Pinnacle FTSE Indonesia ETF

Rekomendasi: Buy

---Harga ditutup di atas EMA5,10 dan membentuk pola white opening marubozu, stochastic netral dan MACD histogram divergence positif. **Target** kenaikan harga pada level **353** kemudian 356 dengan *support* di level 347 *cut loss* jika break 344.

XISI (350)



Technical Corner

21 July 2022

PT INDO PREMIER SEKURITAS

Pacific Century Place 16th Floor SCBD Lot 10
Jl. Jend. Sudirman Kav. 52-53
Jakarta Selatan 12190 - Indonesia
p +62 21 5088 7200

ANALYSTS CERTIFICATION

The views expressed in this research report accurately reflect the analyst's personal views about any and all of the subject securities or issuers; and no part of the research analyst's compensation was, is, or will be, directly or indirectly, related to the specific recommendations or views expressed in the report.

DISCLAIMERS

This research is based on information obtained from sources believed to be reliable, but we do not make any representation or warranty nor accept any responsibility or liability as to its accuracy, completeness or correctness. Opinions expressed are subject to change without notice. This document is prepared for general circulation. Any recommendations contained in this document does not have regard to the specific investment objectives, financial situation and the particular needs of any specific addressee. This document is not and should not be construed as an offer or a solicitation of an offer to purchase or subscribe or sell any securities. PT. Indo Premier Sekuritas or its affiliates may seek or will seek investment banking or other business relationships with the companies in this report.

Refer to Important disclosures on the last of this report