

Technical Corner

18 July 2022

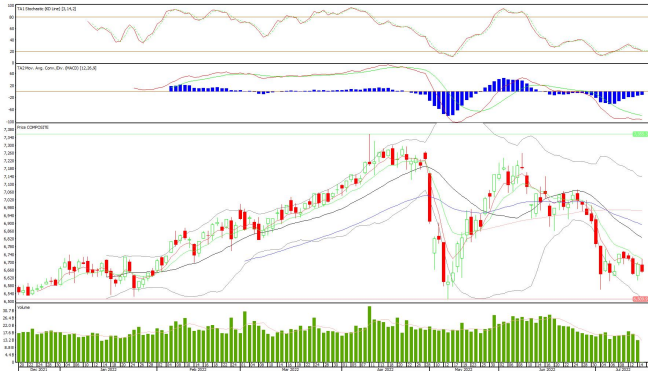
IHSG

Range: 6.610 – 6.690

---Indeks ditutup membentuk pola long black marubozu yang merupakan sinyal bearish continuation namun sudah berada di area support, stochastic netral dan MACD histogram convergence negatif.

Target kenaikan indeks pada level **6.690** kemudian 6.730 dengan *support* di level 6.610 kemudian 6.570.

IHSG (6.652)



PT Indofood CBP Sukses Makmur, Tbk

Rekomendasi: Buy

---Harga ditutup di atas EMA5,10 dan membentuk pola white opening marubozu yang merupakan sinyal bullish continuation, stochastic netral dan MACD histogram convergence negatif. **Target** kenaikan harga pada level **9.450** kemudian 9.550 dengan *support* di level 9.250 *cut loss* jika break 9.150.

ICBP (9.350)



Technical Corner

18 July 2022

PT Surya Citra Media, Tbk

Rekomendasi: Buy

---Harga ditutup di atas EMA5,10 dan membentuk pola long white marubozu yang merupakan sinyal bullish continuation, stochastic memasuki zona netral dan MACD bullish crossover. **Target** kenaikan harga pada level **224** kemudian 232 dengan *support* di level 208 *cut loss* jika break 200.

SCMA (216)



PT Bukit Asam, Tbk

Rekomendasi: Buy on Weakness

---Harga ditutup membentuk pola black opening marubozu yang merupakan sinyal bearish continuation namun masih di atas EMA50, stochastic netral dan MACD histogram convergence positif. **Target** harga beli pada level **3.890** dengan *resist* di level 4.000 kemudian 4.080.

PTBA (3.940)



Technical Corner

18 July 2022

PT Sarana Menara Nusantara, Tbk

Rekomendasi: Buy on Weakness

---Harga ditutup membentuk pola small bearish candle namun masih di atas EMA10, stochastic netral dan MACD histogram convergence positif. **Target** harga beli pada level **1.130** dengan *resist* di level 1.155 kemudian 1.170.

TOWR (1.140)



Premier ETF LQ-45

Rekomendasi: Buy on Weakness

---Harga ditutup membentuk pola long black marubozu yang merupakan sinyal bearish continuation, stochastic oversold dan MACD histogram convergence negatif. **Target** harga beli pada level **1.014** dengan *resist* di level 1.028 kemudian 1.038.

R-LQ45X (1.018)



Technical Corner

18 July 2022

BNP Paribas IDX Growth30 ETF

Rekomendasi: Buy on Weakness

---Harga ditutup membentuk pola black opening marubozu yang merupakan sinyal bearish continuation, stochastic netral dan MACD histogram convergence positif.

Target harga beli pada level **520** dengan *resist* di level 529 kemudian 536.

XBIG (523)



Pinnacle IDX30 ETF

Rekomendasi: Buy on Weakness

---Harga ditutup membentuk pola long black marubozu yang merupakan sinyal bearish continuation, stochastic konsisten oversold dan MACD histogram convergence negatif. **Target** harga beli pada level **513** dengan *resist* di level 521 kemudian 528.

XPID (515)



Technical Corner

18 July 2022

PT INDO PREMIER SEKURITAS

Pacific Century Place 16th Floor SCBD Lot 10
Jl. Jend. Sudirman Kav. 52-53
Jakarta Selatan 12190 - Indonesia
p +62 21 5088 7200

ANALYSTS CERTIFICATION

The views expressed in this research report accurately reflect the analyst's personal views about any and all of the subject securities or issuers; and no part of the research analyst's compensation was, is, or will be, directly or indirectly, related to the specific recommendations or views expressed in the report.

DISCLAIMERS

This research is based on information obtained from sources believed to be reliable, but we do not make any representation or warranty nor accept any responsibility or liability as to its accuracy, completeness or correctness. Opinions expressed are subject to change without notice. This document is prepared for general circulation. Any recommendations contained in this document does not have regard to the specific investment objectives, financial situation and the particular needs of any specific addressee. This document is not and should not be construed as an offer or a solicitation of an offer to purchase or subscribe or sell any securities. PT. Indo Premier Sekuritas or its affiliates may seek or will seek investment banking or other business relationships with the companies in this report.

Refer to Important disclosures on the last of this report