

Technical Corner

15 July 2022

IHSG

Range: 6.630 – 6.750

---Indeks ditutup membentuk pola long white marubozu yang merupakan sinyal bullish continuation, stochastic netral dan MACD histogram convergence negatif.

Target kenaikan indeks pada level **6.750** kemudian 6.810 dengan *support* di level 6.630 kemudian 6.570.

IHSG (6.690)



PT Adaro Energy Indonesia, Tbk

Rekomendasi: Buy

---Harga ditutup di atas EMA5,10 dan membentuk pola small bullish candle, stochastic netral dan MACD histogram divergence positif. **Target** kenaikan harga pada level **2.970** kemudian 3.010 dengan *support* di level 2.890 *cut loss* jika break 2.850.

ADRO (2.930)



Technical Corner

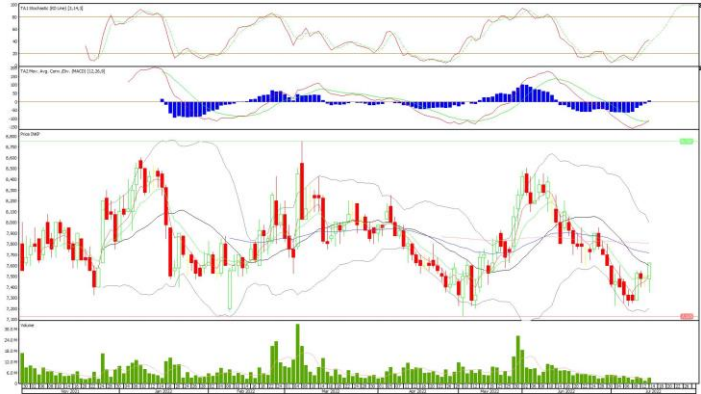
15 July 2022

PT Indah Kiat Pulp & Paper, Tbk

Rekomendasi: Buy

---Harga ditutup di atas EMA5,10 dan membentuk pola white closing marubozu yang merupakan sinyal bullish, stochastic netral dan MACD bullish crossover. **Target** kenaikan harga pada level **7.725** kemudian 7.825 dengan *support* di level 7.525 *cut loss* jika break 7.425.

INKP (7.625)



PT Japfa Comfeed Indonesia Tbk

Rekomendasi: Buy

---Harga ditutup di atas EMA5,10 dan membentuk pola white closing marubozu yang merupakan sinyal bullish continuation, stochastic golden cross dan MACD histogram convergence negatif. **Target** kenaikan harga pada level **1.515** kemudian 1.535 dengan *support* di level 1.475 *cut loss* jika break 1.455.

JPFA (1.495)



Technical Corner

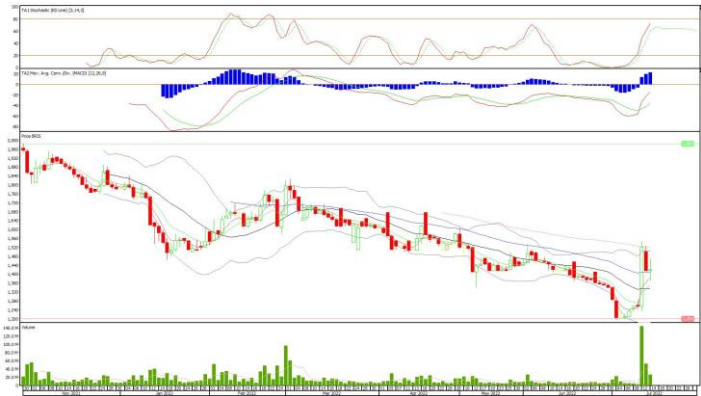
15 July 2022

PT Bank Syariah Indonesia Tbk

Rekomendasi: Buy on Weakness

---Harga ditutup di atas EMA5,10 dan membentuk pola spinning top yang merupakan sinyal indecision, stochastic netral dan MACD histogram divergence positif. **Target** harga beli pada level **1.390** dengan *resist* di level 1.470 kemudian 1.520.

BRIS (1.420)



Premier ETF Index IDX30

Rekomendasi: Buy

---Harga ditutup membentuk pola long white marubozu yang merupakan sinyal bullish continuation, stochastic oversold dan MACD histogram convergence negatif. **Target** kenaikan harga pada level **538** kemudian 545 dengan *support* di level 524 *cut loss* jika break 517.

XIID (531)



Technical Corner

15 July 2022

Premier ETF SRI-KEHATI

Rekomendasi: Buy

---Harga ditutup membentuk pola long white marubozu yang merupakan sinyal bullish continuation, stochastic oversold dan MACD histogram convergence negatif. **Target** kenaikan harga pada level **404** kemudian 409 dengan *support* di level 394 *cut loss* jika break 389.

XISR (399)



Pinnacle Enhanced Sharia ETF

Rekomendasi: Buy

--- Harga ditutup membentuk pola white closing marubozu yang merupakan sinyal bullish continuation, stochastic netral dan MACD bullish crossover. **Target** kenaikan harga pada level **434** kemudian 440 dengan *support* di level 422 *cut loss* jika break 416.

XPES (428)



Technical Corner

15 July 2022

PT INDO PREMIER SEKURITAS

Pacific Century Place 16th Floor SCBD Lot 10
Jl. Jend. Sudirman Kav. 52-53
Jakarta Selatan 12190 - Indonesia
p +62 21 5088 7200

ANALYSTS CERTIFICATION

The views expressed in this research report accurately reflect the analyst's personal views about any and all of the subject securities or issuers; and no part of the research analyst's compensation was, is, or will be, directly or indirectly, related to the specific recommendations or views expressed in the report.

DISCLAIMERS

This research is based on information obtained from sources believed to be reliable, but we do not make any representation or warranty nor accept any responsibility or liability as to its accuracy, completeness or correctness. Opinions expressed are subject to change without notice. This document is prepared for general circulation. Any recommendations contained in this document does not have regard to the specific investment objectives, financial situation and the particular needs of any specific addressee. This document is not and should not be construed as an offer or a solicitation of an offer to purchase or subscribe or sell any securities. PT. Indo Premier Sekuritas or its affiliates may seek or will seek investment banking or other business relationships with the companies in this report.

Refer to Important disclosures on the last of this report