

Technical Corner

12 July 2022

IHSG

Range: 6.680 – 6.760

---Indeks ditutup membentuk pola long black marubozu yang merupakan sinyal bearish continuation, stochastic netral dan MACD histogram convergence negatif.

Target pelemahan indeks pada level **6.680** kemudian 6.640 dengan *resist* di level 6.760 kemudian 6.800.

IHSG (6.722)



PT Barito Pacific Tbk

Rekomendasi: Buy

---Harga ditutup di atas EMA5,10 dan membentuk pola white closing marubozu yang merupakan sinyal bullish continuation, stochastic memasuki zona overbought dan MACD histogram divergence positif. **Target** kenaikan harga pada level **835** kemudian 850 dengan *support* di level 805 *cut loss* jika break 790.

BRPT (820)



Technical Corner

12 July 2022

PT Indofood CBP Sukses Makmur Tbk

Rekomendasi: Buy

---Harga ditutup di atas EMA5,10 dan membentuk pola small bullish candle, stochastic netral dan MACD histogram convergence negatif. **Target** kenaikan harga pada level **9.550** kemudian 9.650 dengan *support* di level 9.350 *cut loss* jika break 9.250.

ICBP (9.450)



PT Mitra Adiperkasa Tbk

Rekomendasi: Buy on Weakness

---Harga ditutup membentuk pola long black marubozu yang merupakan sinyal bearish continuation, stochastic death cross dan MACD histogram divergence negatif. **Target** harga beli pada level **885** dengan *resist* di level 910 kemudian 925.

MAPI (895)



Technical Corner

12 July 2022

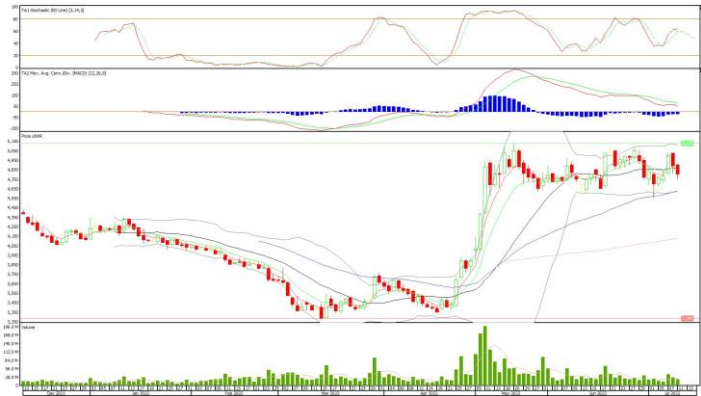
PT Unilever Indonesia Tbk

Rekomendasi: Buy on Weakness

---Harga ditutup membentuk pola long black marubozu yang merupakan sinyal bearish continuation, stochastic netral dan MACD histogram divergence negatif.

Target harga beli pada level **4.720** dengan *resist* di level 4.900 kemudian 5.000.

UNVR (4.800)



Danareksa ETF Indonesia Top 40

Rekomendasi: Buy on Weakness

---Harga ditutup membentuk pola small bearish candle, stochastic konsisten oversold dan MACD histogram convergence negatif. **Target** harga beli pada level **467** dengan *resist* di level 473 kemudian 477.

XDIF (469)



Technical Corner

12 July 2022

Premier ETF Indonesia SOC

Rekomendasi: Buy on Weakness

---Harga ditutup membentuk pola small bearish candle, stochastic oversold dan MACD histogram convergence negatif.

Target harga beli pada level **677** dengan *resist* di level 688 kemudian 698.

XISC (681)



Premier ETF Indonesia SOC

Rekomendasi: Buy on Weakness

---Harga ditutup membentuk pola doji yang merupakan sinyal indecision, stochastic oversold dan MACD histogram convergence negatif. **Target** harga beli pada level **417** dengan *resist* di level 424 kemudian 428.

XPES (421)



Technical Corner

12 July 2022

PT INDO PREMIER SEKURITAS

Pacific Century Place 16th Floor SCBD Lot 10
Jl. Jend. Sudirman Kav. 52-53
Jakarta Selatan 12190 - Indonesia
p +62 21 5088 7200

ANALYSTS CERTIFICATION

The views expressed in this research report accurately reflect the analyst's personal views about any and all of the subject securities or issuers; and no part of the research analyst's compensation was, is, or will be, directly or indirectly, related to the specific recommendations or views expressed in the report.

DISCLAIMERS

This research is based on information obtained from sources believed to be reliable, but we do not make any representation or warranty nor accept any responsibility or liability as to its accuracy, completeness or correctness. Opinions expressed are subject to change without notice. This document is prepared for general circulation. Any recommendations contained in this document does not have regard to the specific investment objectives, financial situation and the particular needs of any specific addressee. This document is not and should not be construed as an offer or a solicitation of an offer to purchase or subscribe or sell any securities. PT. Indo Premier Sekuritas or its affiliates may seek or will seek investment banking or other business relationships with the companies in this report.

Refer to Important disclosures on the last of this report