

Technical Corner

8 July 2022

IHSG

Range: 6.600 – 6.700

---Indeks ditutup membentuk pola small bullish candle, stochastic konsisten oversold dan MACD histogram convergence negatif. **Target** kenaikan indeks pada level **6.700** kemudian 6.750 dengan *support* di level 6.600 kemudian 6.550.

IHSG (6.653)

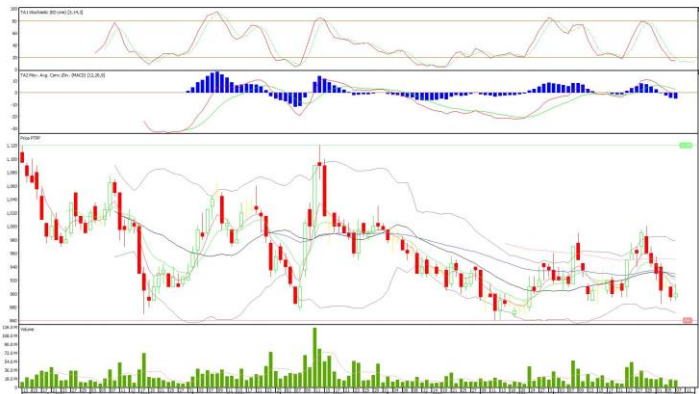


PT Pembangunan Perumahan Tbk

Rekomendasi: Buy

---Harga ditutup membentuk pola small bullish candle, stochastic oversold dan MACD histogram divergence negatif. **Target** kenaikan harga pada level **915** kemudian 930 dengan *support* di level 885 *cut loss* jika break 870.

PTPP (900)



Technical Corner

8 July 2022

PT Mitra Adiperkasa Tbk

Rekomendasi: Buy

---Harga ditutup di atas EMA5,10 dan membentuk pola white closing marubozu yang merupakan sinyal bullish continuation, stochastic golden cross dan MACD histogram convergence positif.

Target kenaikan harga pada level **945** kemudian 965 dengan *support* di level 905 *cut loss* jika break 885.

MAPI (925)



PT Mayora Indah Tbk

Rekomendasi: Buy

---Harga ditutup di atas EMA5,10 dan membentuk pola long white marubozu yang merupakan sinyal bullish continuation, stochastic golden cross dan MACD histogram convergence negatif.

Target kenaikan harga pada level **2.040** kemudian 2.080 dengan *support* di level 1.960 *cut loss* jika break 1.920.

MYOR (2.000)



Technical Corner

8 July 2022

PT Indo Tambangraya Megah Tbk

Rekomendasi: Buy on Weakness

---Harga ditutup membentuk pola small bearish candle namun masih di atas EMA5,10, stochastic netral dan MACD histogram convergence negatif. **Target** harga beli pada level **31.575** dengan *resist* di level 32.500 kemudian 33.150.

ITMG (31.850)



Premier ETF LQ-45

Rekomendasi: Buy on Weakness

---Harga ditutup membentuk pola small bearish candle, stochastic konsisten oversold dan MACD histogram convergence negatif. **Target** harga beli pada level **1.018** dengan *resist* di level 1.036 kemudian 1.052.

R-LQ45X (1.024)



Technical Corner

8 July 2022

Premier ETF Index IDX30

Rekomendasi: Buy on Weakness

---Harga ditutup membentuk pola doji yang merupakan sinyal indecision, stochastic konsisten oversold dan MACD histogram convergence negatif. **Target** harga beli pada level **527** dengan *resist* di level 536 kemudian 544.

XIID (531)



Pinnacle Core High Dividend ETF

Rekomendasi: Buy on Weakness

---Harga ditutup membentuk pola small bearish candle, stochastic netral dan MACD histogram convergence negatif. **Target** harga beli pada level **530** dengan *resist* di level 538 kemudian 544.

XPDV (533)



Technical Corner

8 July 2022

PT INDO PREMIER SEKURITAS

Pacific Century Place 16th Floor SCBD Lot 10
Jl. Jend. Sudirman Kav. 52-53
Jakarta Selatan 12190 - Indonesia
p +62 21 5088 7200

ANALYSTS CERTIFICATION

The views expressed in this research report accurately reflect the analyst's personal views about any and all of the subject securities or issuers; and no part of the research analyst's compensation was, is, or will be, directly or indirectly, related to the specific recommendations or views expressed in the report.

DISCLAIMERS

This research is based on information obtained from sources believed to be reliable, but we do not make any representation or warranty nor accept any responsibility or liability as to its accuracy, completeness or correctness. Opinions expressed are subject to change without notice. This document is prepared for general circulation. Any recommendations contained in this document does not have regard to the specific investment objectives, financial situation and the particular needs of any specific addressee. This document is not and should not be construed as an offer or a solicitation of an offer to purchase or subscribe or sell any securities. PT. Indo Premier Sekuritas or its affiliates may seek or will seek investment banking or other business relationships with the companies in this report.

Refer to Important disclosures on the last of this report