

Technical Corner

5 July 2022

IHSG

Range: 6.570 – 6.710

---Indeks ditutup membentuk pola long black marubozu yang merupakan sinyal bearish continuation, stochastic oversold dan MACD histogram divergence negatif.

Target pelemahan indeks pada level **6.570** kemudian 6.500 dengan *resist* di level 6.710 kemudian 6.780.

IHSG (6.639)



PT Media Nusantara Citra Tbk

Rekomendasi: Buy

---Harga ditutup di atas EMA5 dan membentuk pola white closing marubozu yang merupakan sinyal bullish continuation, stochastic golden cross dan MACD histogram convergence negatif.

Target kenaikan harga pada level **975** kemudian 990 dengan *support* di level 945 *cut loss* jika break 930.

MNCN (960)



Technical Corner

5 July 2022

PT Charoen Pokphand Indonesia Tbk

Rekomendasi: Buy on Weakness

---Harga ditutup membentuk pola black opening marubozu yang merupakan sinyal bearish continuation namun masih di atas EMA10, stochastic death cross dan MACD histogram convergence negatif. **Target** harga beli pada level **5.700** dengan *resist* di level 5.900 kemudian 6.000.

CPIN (5.775)



PT Mitra Adiperkasa Tbk

Rekomendasi: Buy on Weakness

---Harga ditutup membentuk pola small bearish candle namun masih di atas EMA50, stochastic death cross dan MACD histogram convergence positif. **Target** harga beli pada level **890** dengan *resist* di level 920 kemudian 940.

MAPI (900)



Technical Corner

5 July 2022

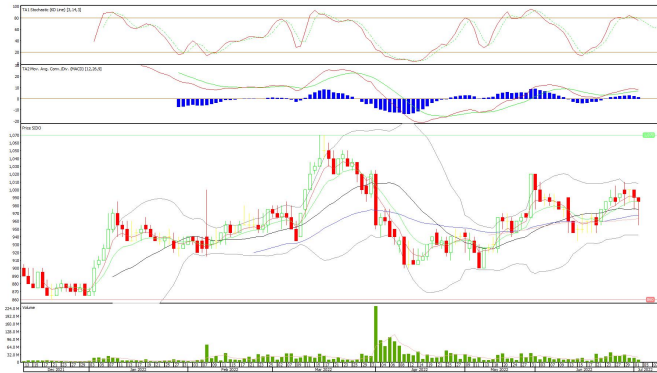
PT Industri Jamu dan Farmasi Sido Muncul Tbk

Rekomendasi: Buy on Weakness

---Harga ditutup membentuk pola white opening marubozu yang merupakan sinyal bearish continuation namun masih di atas MA20, stochastic memasuki zona netral dan MACD histogram convergence positif.

Target harga beli pada level **975** dengan *resist* di level 1.000 kemudian 1.020.

SIDO (985)



Cipta ETF Index LQ45

Rekomendasi: Buy on Weakness

---Harga ditutup membentuk pola black opening marubozu yang merupakan sinyal bearish continuation, stochastic oversold dan MACD histogram divergence negatif.

Target harga beli pada level **100** dengan *resist* di level 103 kemudian 105.

XCLQ (101)



Technical Corner

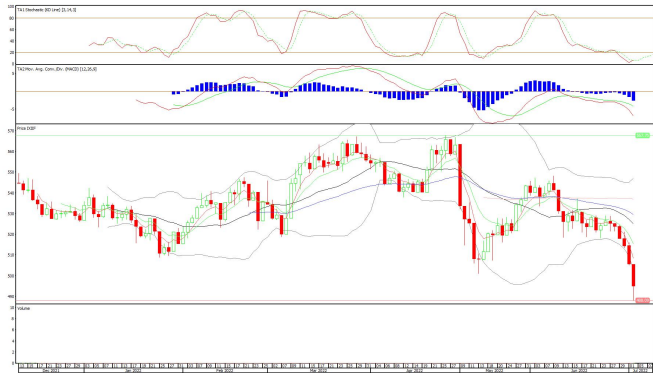
5 July 2022

Premier ETF Indonesia Financial

Rekomendasi: Buy on Weakness

---Harga ditutup membentuk pola black opening marubozu yang merupakan sinyal bearish continuation, stochastic golden cross dan MACD histogram divergence negatif. **Target** harga beli pada level **492** dengan *resist* di level 501 kemudian 508.

XIIF (495)



Pinnacle Enhanced Liquid ETF

Rekomendasi: Buy on Weakness

---Harga ditutup membentuk pola black opening marubozu yang merupakan sinyal bearish continuation, stochastic oversold dan MACD histogram divergence negatif. **Target** harga beli pada level **492** dengan *resist* di level 507 kemudian 515.

XPLQ (495)



Technical Corner

5 July 2022

PT INDO PREMIER SEKURITAS

Pacific Century Place 16th Floor SCBD Lot 10
Jl. Jend. Sudirman Kav. 52-53
Jakarta Selatan 12190 - Indonesia
p +62 21 5088 7200

ANALYSTS CERTIFICATION

The views expressed in this research report accurately reflect the analyst's personal views about any and all of the subject securities or issuers; and no part of the research analyst's compensation was, is, or will be, directly or indirectly, related to the specific recommendations or views expressed in the report.

DISCLAIMERS

This research is based on information obtained from sources believed to be reliable, but we do not make any representation or warranty nor accept any responsibility or liability as to its accuracy, completeness or correctness. Opinions expressed are subject to change without notice. This document is prepared for general circulation. Any recommendations contained in this document does not have regard to the specific investment objectives, financial situation and the particular needs of any specific addressee. This document is not and should not be construed as an offer or a solicitation of an offer to purchase or subscribe or sell any securities. PT. Indo Premier Sekuritas or its affiliates may seek or will seek investment banking or other business relationships with the companies in this report.

Refer to Important disclosures on the last of this report