

# Technical Corner

22 October 2021

## IHSG

**Range: 6.595 – 6.675**

---Indeks ditutup membentuk pola long black marubozu yang merupakan sinyal bearish continuation, stochastic konsisten overbought dan MACD histogram convergence positif. **Target** pelemahan indeks pada level 6.595 dan 6.555 dengan *resist* di level 6.675 dan 6.715.

## IHSG (6.633)



## PT Astra Agro Lestari, Tbk

**Rekomendasi: Buy**

---Harga ditutup di atas EMA10 dan membentuk pola spinning top yang merupakan sinyal indecision, stochastic netral dan MACD bearish crossover. **Target** kenaikan harga pada level **10.325** kemudian 10.400 dengan *support* di level 10.175, *cut loss* jika break 10.100.

## AAJI (10.250)



# Technical Corner

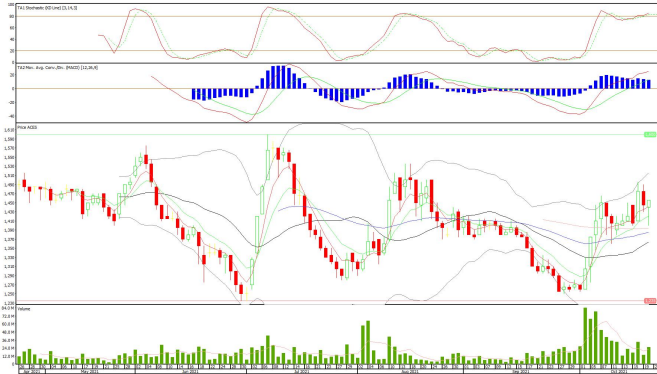
22 October 2021

## PT Ace Hardware Indonesia, Tbk

**Rekomendasi: Buy**

---Harga ditutup di atas EMA5,10 dan membentuk pola hammer yang merupakan sinyal bullish reversal, stochastic overbought dan MACD histogram convergence positif. **Target** kenaikan harga pada level **1.470** kemudian 1.485 dengan *support* di level 1.440, *cut loss* jika break 1.425.

## ACES (1.455)



## PT Ramayana Lestari Sentosa, Tbk

**Rekomendasi: Buy on Weakness**

---Harga ditutup di bawah EMA5,10 dan membentuk pola black closing marubozu yang merupakan sinyal bearish continuation, stochastic memasuki zona netral dan MACD histogram convergence positif. **Target** harga beli pada level **735** dengan *resist* di level 760 kemudian 770.

## RALS (745)



# Technical Corner

22 October 2021

## PT Pakuwon Jati, Tbk

**Rekomendasi: Buy on Weakness**

---Harga ditutup di bawah EMA5,10 dan membentuk pola black closing marubozu yang merupakan sinyal bearish continuation, stochastic netral dan MACD bearish crossover. **Target** harga beli pada level **515** dengan *resist* di level 530 kemudian 535.

## PWON (520)



## BNI-AM Nusantara MSCI Indo ETF

**Rekomendasi: Buy on Weakness**

---Harga ditutup membentuk pola long black marubozu yang merupakan sinyal bearish continuation namun masih di atas EMA10, stochastic konsisten overbought dan MACD histogram convergence positif. **Target** harga beli pada level **1.056** dengan *resist* di level 1.069 kemudian 1.078.

## XBNI (1.061)



# Technical Corner

22 October 2021

## Premier ETF IDX High Dividend 20

**Rekomendasi: Buy on Weakness**

--- Harga ditutup membentuk pola long black marubozu yang merupakan sinyal bearish continuation namun masih di atas EMA10, stochastic konsisten overbought dan MACD histogram convergence positif.

**Target** harga beli pada level **502** dengan *resist* di level 509 kemudian 513.

## XIHD (505)



## Premier ETF SRI-KEHATI

**Rekomendasi: Buy on Weakness**

--- Harga ditutup membentuk pola long black marubozu yang merupakan sinyal bearish continuation namun masih di atas EMA5,10, stochastic konsisten overbought dan MACD histogram convergence positif.

**Target** harga beli pada level **393** dengan *resist* di level 399 kemudian 402.

## XISR (396)



# Technical Corner

22 October 2021

## **PT INDO PREMIER SEKURITAS**

Pacific Century Place 16th Floor SCBD Lot 10  
Jl. Jend. Sudirman Kav. 52-53  
Jakarta Selatan 12190 - Indonesia  
p +62 21 5088 7200

### **ANALYSTS CERTIFICATION**

The views expressed in this research report accurately reflect the analyst's personal views about any and all of the subject securities or issuers; and no part of the research analyst's compensation was, is, or will be, directly or indirectly, related to the specific recommendations or views expressed in the report.

### **DISCLAIMERS**

This research is based on information obtained from sources believed to be reliable, but we do not make any representation or warranty nor accept any responsibility or liability as to its accuracy, completeness or correctness. Opinions expressed are subject to change without notice. This document is prepared for general circulation. Any recommendations contained in this document does not have regard to the specific investment objectives, financial situation and the particular needs of any specific addressee. This document is not and should not be construed as an offer or a solicitation of an offer to purchase or subscribe or sell any securities. PT. Indo Premier Sekuritas or its affiliates may seek or will seek investment banking or other business relationships with the companies in this report.

**Refer to Important disclosures on the last of this report**