

# Technical Corner

13 October 2021

## IHSG

**Range: 6.445 – 6.525**

---Indeks ditutup di atas EMA5,10 dan membentuk pola small bullish candle, stochastic konsisten overbought dan MACD histogram convergence positif. **Target** kenaikan indeks pada level 6.525 dan 6.565 dengan *support* di level 6.445 dan 6.405.

## IHSG (6.486)

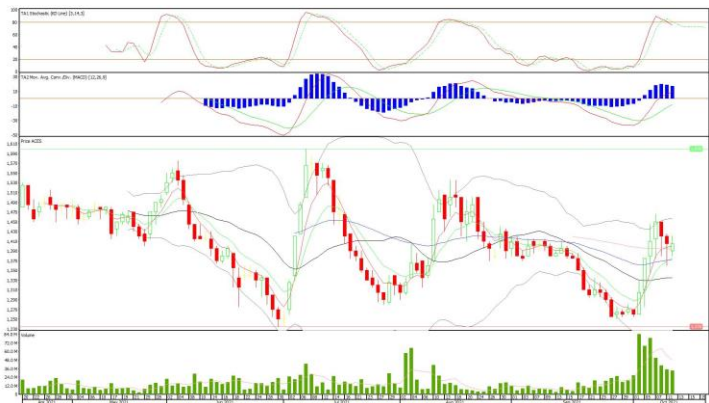


## PT Ace Hardware Indonesia, Tbk

**Rekomendasi: Buy**

---Harga ditutup di atas EMA5,10 dan membentuk pola long white marubozu yang merupakan sinyal bullish continuation, stochastic memasuki zona netral dan MACD histogram convergence positif. **Target** kenaikan harga pada level 1.425 kemudian 1.445 dengan *support* di level 1.385, *cut loss* jika break 1.365.

## ACES (1.405)



# Technical Corner

13 October 2021

## PT H.M. Sampoerna, Tbk

### Rekomendasi: Buy

---Harga ditutup di atas EMA5,10 dan membentuk pola white closing marubozu yang merupakan sinyal bullish continuation, stochastic netral dan MACD histogram divergence positif. **Target** kenaikan harga pada level **1.150** kemudian 1.175 dengan *support* di level 1.100, *cut loss* jika break 1.075.

## HMSP (1.125)



## PT Bank BTPN Syariah, Tbk

### Rekomendasi: Buy on Weakness

---Harga ditutup membentuk pola black closing marubozu yang merupakan sinyal bearish continuation, namun masih di atas EMA10, stochastic netral dan MACD histogram convergence positif. **Target** harga beli pada level **3.560** dengan *resist* di level 3.670 kemudian 3.760.

## BTPS (3.590)



# Technical Corner

13 October 2021

## PT Salim Ivomas Pratama, Tbk

**Rekomendasi: Buy on Weakness**

---Harga ditutup membentuk pola long black marubozu yang merupakan sinyal bearish continuation, namun masih di atas EMA10, stochastic konsisten overbought dan MACD histogram convergence positif.

**Target** harga beli pada level **480** dengan *resist* di level 498 kemudian 510.

## SIMP (486)



## Premier ETF Indonesia Financial

**Rekomendasi: Buy**

---Harga ditutup di atas EMA5,10 dan membentuk pola white opening marubozu yang merupakan sinyal bullish continuation, stochastic konsisten overbought dan MACD histogram divergence positif. **Target** kenaikan harga pada level **557** kemudian 565 dengan *support* di level 541, *cut loss* jika break 533.

## XIIF (549)



# Technical Corner

13 October 2021

## Premier ETF SRI-KEHATI

### Rekomendasi: Buy

---Harga ditutup di atas EMA5,10 dan membentuk pola white opening marubozu yang merupakan sinyal bullish continuation, stochastic konsisten overbought dan MACD histogram convergence positif. **Target** kenaikan harga pada level **388** kemudian 391 dengan *support* di level 382, *cut loss* jika break 379.

## XISR (385)



## XPFT (536)



## Pinnacle FTSE Indonesia ETF

### Rekomendasi: Buy

---Harga ditutup di atas EMA5,10 dan membentuk pola white opening marubozu yang merupakan sinyal bullish continuation, stochastic konsisten overbought dan MACD histogram convergence positif. **Target** kenaikan harga pada level **540** kemudian 544 dengan *support* di level 532, *cut loss* jika break 528.

# Technical Corner

---

13 October 2021

## **PT INDO PREMIER SEKURITAS**

Pacific Century Place 16th Floor SCBD Lot 10  
Jl. Jend. Sudirman Kav. 52-53  
Jakarta Selatan 12190 - Indonesia  
p +62 21 5088 7200

### **ANALYSTS CERTIFICATION**

The views expressed in this research report accurately reflect the analyst's personal views about any and all of the subject securities or issuers; and no part of the research analyst's compensation was, is, or will be, directly or indirectly, related to the specific recommendations or views expressed in the report.

### **DISCLAIMERS**

This research is based on information obtained from sources believed to be reliable, but we do not make any representation or warranty nor accept any responsibility or liability as to its accuracy, completeness or correctness. Opinions expressed are subject to change without notice. This document is prepared for general circulation. Any recommendations contained in this document does not have regard to the specific investment objectives, financial situation and the particular needs of any specific addressee. This document is not and should not be construed as an offer or a solicitation of an offer to purchase or subscribe or sell any securities. PT. Indo Premier Sekuritas or its affiliates may seek or will seek investment banking or other business relationships with the companies in this report.

**Refer to Important disclosures on the last of this report**