

# Technical Corner

5 October 2021

## IHSG

**Range: 6.290 – 6.400**

---Indeks ditutup di atas EMA5,10 dan membentuk pola white marubozu yang merupakan sinyal bullish continuation, stochastic konsisten overbought dan MACD histogram divergence positif.

**Target** kenaikan indeks pada level 6.400 dan 6.455 dengan *support* di level 6.290 dan 6.235.

## IHSG (6.343)

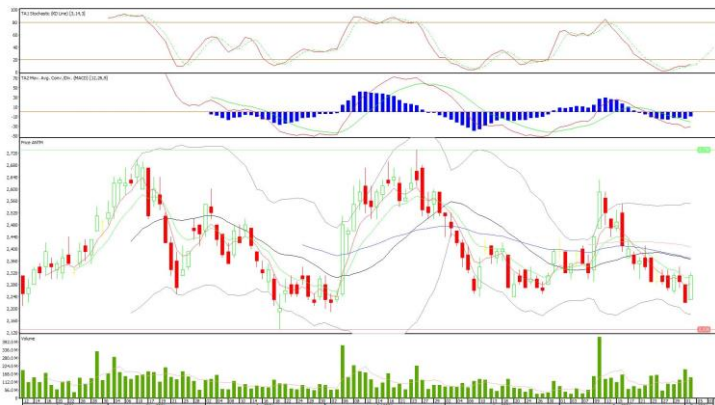


## PT Aneka Tambang, Tbk

**Rekomendasi: Buy**

---Harga ditutup di atas EMA5,10 dan membentuk pola white opening marubozu yang merupakan sinyal bullish continuation, stochastic konsisten oversold dan MACD histogram convergence negatif. **Target** kenaikan harga pada level **2.340** kemudian 2.370 dengan *support* di level 2.280, *cut loss* jika break 2.250.

## ANTM (2.310)



# Technical Corner

5 October 2021

## PT Charoen Pokphand Indonesia, Tbk

**Rekomendasi: Buy**

---Harga ditutup membentuk pola white opening marubozu yang merupakan sinyal bullish continuation, stochastic netral dan MACD histogram divergence negatif.

**Target** kenaikan harga pada level **6.400** kemudian 6.475 dengan *support* di level 6.250, *cut loss* jika break 6.175.

## CPIN (6.325)



## PT XL Axiata, Tbk

**Rekomendasi: Buy**

---Harga ditutup di atas EMA5,10 dan membentuk pola spinning top yang merupakan sinyal indecision, stochastic death cross and MACD histogram divergence positif. **Target** kenaikan harga pada level **3.050** kemudian 3.090 dengan *support* di level 2.970, *cut loss* jika break 2.930.

## EXCL (3.010)



# Technical Corner

5 October 2021

## PT Indosat, Tbk

**Rekomendasi: Buy**

---Harga ditutup membentuk pola small bullish candle, stochastic death cross dan MACD histogram convergence negatif.  
**Target** kenaikan harga pada level **6.475** kemudian 6.575 dengan *support* di level 6.275, *cut loss* jika break 6.175.

## ISAT (6.375)



## Premier ETF IDX 30

**Rekomendasi: Buy**

---Harga ditutup di atas EMA5,10 dan membentuk pola white marubozu yang merupakan sinyal bullish continuation, stochastic konsisten overbought dan MACD histogram divergence positif.  
**Target** kenaikan harga pada level **519** kemudian 526 dengan *support* di level 505, *cut loss* jika break 498.

## XIIT (512)



# Technical Corner

5 October 2021

## Premier ETF Indonesia SOC

**Rekomendasi: Buy**

---Harga ditutup di atas EMA5,10 dan membentuk pola white opening marubozu yang merupakan sinyal bullish continuation, stochastic konsisten overbought dan MACD histogram divergence positif. **Target** kenaikan harga pada level **703** kemudian 714 dengan *support* di level 681, *cut loss* jika break 670.

## XISC (692)



## Pinnacle Enhanced Sharia ETF

**Rekomendasi: Buy**

---Harga ditutup di atas EMA5,10 dan membentuk pola white marubozu yang merupakan sinyal bullish continuation, stochastic death cross dan MACD histogram divergence positif. **Target** kenaikan harga pada level **389** kemudian 395 dengan *support* di level 377, *cut loss* jika break 371.

## XPES (383)



# Technical Corner

---

5 October 2021

## **PT INDO PREMIER SEKURITAS**

Pacific Century Place 16th Floor SCBD Lot 10  
Jl. Jend. Sudirman Kav. 52-53  
Jakarta Selatan 12190 - Indonesia  
p +62 21 5088 7200

### **ANALYSTS CERTIFICATION**

The views expressed in this research report accurately reflect the analyst's personal views about any and all of the subject securities or issuers; and no part of the research analyst's compensation was, is, or will be, directly or indirectly, related to the specific recommendations or views expressed in the report.

### **DISCLAIMERS**

This research is based on information obtained from sources believed to be reliable, but we do not make any representation or warranty nor accept any responsibility or liability as to its accuracy, completeness or correctness. Opinions expressed are subject to change without notice. This document is prepared for general circulation. Any recommendations contained in this document does not have regard to the specific investment objectives, financial situation and the particular needs of any specific addressee. This document is not and should not be construed as an offer or a solicitation of an offer to purchase or subscribe or sell any securities. PT. Indo Premier Sekuritas or its affiliates may seek or will seek investment banking or other business relationships with the companies in this report.

**Refer to Important disclosures on the last of this report**