

Technical Corner

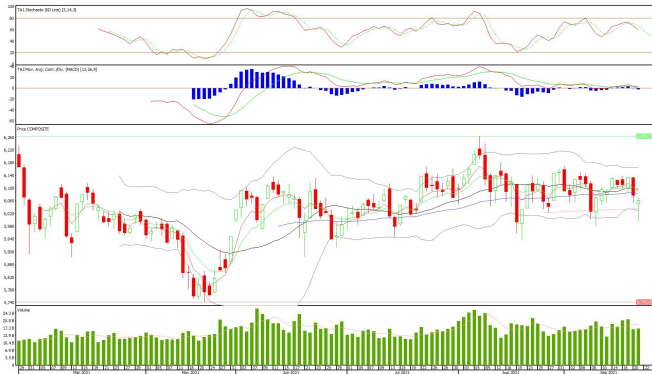
22 September 2021

IHSG

Range: 6.020 – 6.100

---Indeks ditutup di atas MA100 dan membentuk pola small bullish candle, stochastic netral dan MACD bearish crossover. **Target** kenaikan indeks pada level **6.100** dan 6.140 dengan *support* di level 6.020 kemudian 5.980.

IHSG (6.061)



PT Adaro Energy, Tbk

Rekomendasi: Buy

---Harga ditutup di atas MA20 dan membentuk pola long white marubozu yang merupakan sinyal bullish continuation, stochastic netral dan MACD histogram divergence negatif. **Target** kenaikan harga pada level **1.370** kemudian 1.395 dengan *support* di level 1.320, *cut loss* jika break 1.295.

ADRO (1.345)



Technical Corner

22 September 2021

PT Pakuwon Jati, Tbk

Rekomendasi: Buy

---Harga ditutup di atas EMA5,10 dan membentuk pola long white marubozu yang merupakan sinyal bullish continuation, stochastic konsisten overbought dan MACD histogram convergence positif. **Target** kenaikan harga pada level **486** kemudian 492 dengan *support* di level 474, *cut loss* jika break 468.

PWON (480)



PT Bank Central Asia, Tbk

Rekomendasi: Buy on Weakness

---Harga ditutup membentuk pola small bearish candle namun masih di atas EMA50, stochastic netral dan MACD histogram divergence negatif. **Target** harga beli pada level **32.300** dengan *resist* di level 32.775 kemudian 33.025.

BBCA (32.450)



Technical Corner

22 September 2021

PT Bank Mandiri, Tbk

Rekomendasi: Buy on Weakness

---Harga ditutup membentuk pola black opening marubozu yang merupakan sinyal bearish continuation, stochastic netral dan MACD histogram divergence negatif.

Target harga beli pada level **5.925** dengan *resist* di level 6.075 kemudian 6.200.

BMRI (5.975)



Premier ETF LQ-45

Rekomendasi: Buy on Weakness

---Harga ditutup membentuk pola black opening marubozu yang merupakan sinyal bearish continuation, stochastic netral dan MACD histogram divergence negatif.

Target harga beli pada level **898** dengan *resist* di level 912 kemudian 921.

R-LQ45X (904)



Technical Corner

22 September 2021

Premier ETF MSCI Indonesia Large Cap

Rekomendasi: Buy on Weakness

---Harga ditutup membentuk pola black opening marubozu yang merupakan sinyal bearish continuation, stochastic netral dan MACD histogram divergence negatif.

Target harga beli pada level **228** dengan **resist** di level 231 kemudian 233.

XIML (229)



XPSG (345)

Pinnacle Indonesia ESG ETF

Rekomendasi: Buy on Weakness

---Harga ditutup membentuk black opening marubozu yang merupakan sinyal bearish continuation, stochastic netral dan MACD histogram divergence negatif.

Target harga beli pada level **344** dengan **resist** di level 348 kemudian 351.



Technical Corner

22 September 2021

PT INDO PREMIER SEKURITAS

Pacific Century Place 16th Floor SCBD Lot 10
Jl. Jend. Sudirman Kav. 52-53
Jakarta Selatan 12190 - Indonesia
p +62 21 5088 7200

ANALYSTS CERTIFICATION

The views expressed in this research report accurately reflect the analyst's personal views about any and all of the subject securities or issuers; and no part of the research analyst's compensation was, is, or will be, directly or indirectly, related to the specific recommendations or views expressed in the report.

DISCLAIMERS

This research is based on information obtained from sources believed to be reliable, but we do not make any representation or warranty nor accept any responsibility or liability as to its accuracy, completeness or correctness. Opinions expressed are subject to change without notice. This document is prepared for general circulation. Any recommendations contained in this document does not have regard to the specific investment objectives, financial situation and the particular needs of any specific addressee. This document is not and should not be construed as an offer or a solicitation of an offer to purchase or subscribe or sell any securities. PT. Indo Premier Sekuritas or its affiliates may seek or will seek investment banking or other business relationships with the companies in this report.

Refer to Important disclosures on the last of this report