

Technical Corner

20 September 2021

IHSG

Range: 6.095 – 6.175

---Indeks ditutup membentuk pola white closing marubozu yang merupakan sinyal bullish continuation namun tepat di area resistance sideways, stochastic netral dan MACD histogram divergence positif. **Target** pelemahan indeks pada level **6.095** dan 6.055 dengan *resist* di level 6.175 kemudian 6.215.

IHSG (6.133)



PT Astra International, Tbk

Rekomendasi: Buy

---Harga ditutup di atas EMA5,10 dan membentuk hammer yang merupakan sinyal bullish reversal, stochastic netral dan MACD histogram convergence positif. **Target** kenaikan harga pada level **5.475** kemudian 5.525 dengan *support* di level 5.375, *cut loss* jika break 5.325.

ASII (5.425)



Technical Corner

20 September 2021

PT Sarana Menara Nusantara, Tbk

Rekomendasi: Buy

---Harga ditutup di atas EMA50 dan membentuk pola doji yang merupakan sinyal indecision, stochastic netral dan MACD bearish crossover. **Target** kenaikan harga pada level **1.360** kemudian 1.375 dengan *support* di level 1.330, *cut loss* jika break 1.315.

TOWR (1.345)



PT Bumi Serpong Damai, Tbk

Rekomendasi: Buy on Weakness

---Harga ditutup membentuk pola doji yang merupakan sinyal indecision, stochastic death cross, MACD histogram convergence positif. **Target** harga beli pada level **970** dengan *resist* di level 1.000 kemudian 1.020.

BSDE (980)



Technical Corner

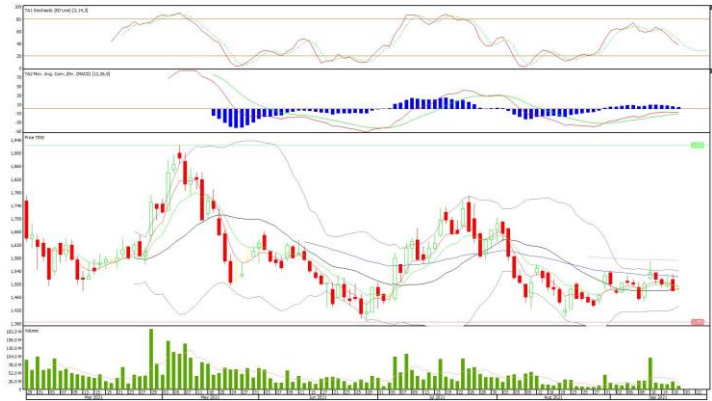
20 September 2021

PT Timah, Tbk

Rekomendasi: Buy on Weakness

---Harga ditutup membentuk pola doji yang merupakan sinyal indecision, stochastic netral dan MACD histogram convergence positif. **Target** harga beli pada level **1.465** dengan *resist* di level 1.505 kemudian 1.525.

TINS (1.485)



Cipta ETF Index LQ45

Rekomendasi: Buy on Weakness

---Harga ditutup membentuk pola doji yang merupakan sinyal indecision, stochastic netral dan MACD histogram divergence negatif. **Target** harga beli pada level **89** dengan *resist* di level 91 kemudian 92.

XCLQ (90)



Technical Corner

20 September 2021

Premier ETF Indonesia SOC

Rekomendasi: Buy on Weakness

---Harga ditutup membentuk pola small bearish candle namun masih di atas EMA50, stochastic death cross dan MACD histogram convergence positif. **Target** harga beli pada level **647** dengan *resist* di level 657 kemudian 661.

XISC (650)



Premier ETF SMinfra18

Rekomendasi: Buy on Weakness

---Harga ditutup membentuk pola black opening marubozu yang merupakan sinyal bearish continuation namun masih tertahan MA100, stochastic death cross dan MACD bearish crossover. **Target** harga beli pada level **313** dengan *resist* di level 318 kemudian 322.

XISI (315)



Technical Corner

20 September 2021

PT INDO PREMIER SEKURITAS

Pacific Century Place 16th Floor SCBD Lot 10
Jl. Jend. Sudirman Kav. 52-53
Jakarta Selatan 12190 - Indonesia
p +62 21 5088 7200

ANALYSTS CERTIFICATION

The views expressed in this research report accurately reflect the analyst's personal views about any and all of the subject securities or issuers; and no part of the research analyst's compensation was, is, or will be, directly or indirectly, related to the specific recommendations or views expressed in the report.

DISCLAIMERS

This research is based on information obtained from sources believed to be reliable, but we do not make any representation or warranty nor accept any responsibility or liability as to its accuracy, completeness or correctness. Opinions expressed are subject to change without notice. This document is prepared for general circulation. Any recommendations contained in this document does not have regard to the specific investment objectives, financial situation and the particular needs of any specific addressee. This document is not and should not be construed as an offer or a solicitation of an offer to purchase or subscribe or sell any securities. PT. Indo Premier Sekuritas or its affiliates may seek or will seek investment banking or other business relationships with the companies in this report.

Refer to Important disclosures on the last of this report