

Technical Corner

23 August 2021

IHSG

Range: 5.990 – 6.070

---Indeks ditutup membentuk pola white closing marubozu yang merupakan sinyal bullish continuation, stochastic netral dan MACD histogram divergence negatif.

Target kenaikan indeks pada level **6.070** dan 6.110 dengan *support* di level 5.990 kemudian 5.950.

IHSG (6.031)



PT Bank Rakyat Indonesia, Tbk

Rekomendasi: Buy

---Harga ditutup di atas EMA5,10 dan membentuk pola long white marubozu yang merupakan sinyal bullish continuation, stochastic death cross dan MACD histogram convergence positif.

Target kenaikan harga pada level **3.980** kemudian 4.030 dengan *support* di level 3.880, cut loss jika break 3.830.

BBRI (3.930)



Technical Corner

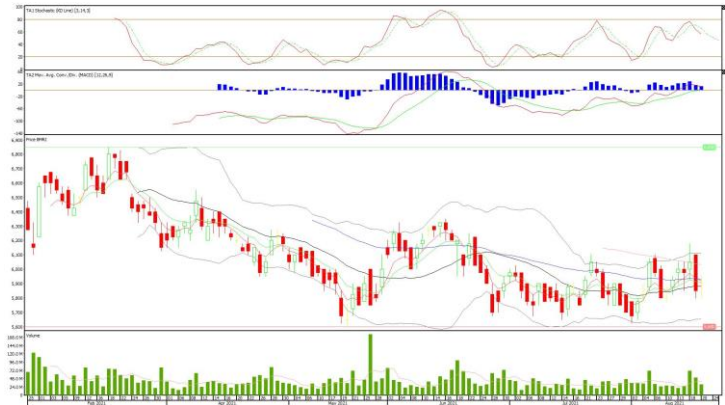
23 August 2021

PT Bank Mandiri, Tbk

Rekomendasi: Buy

---Harga ditutup di atas MA20 dan membentuk pola doji yang merupakan sinyal indecision, stochastic netral dan MACD histogram convergence positif. **Target** kenaikan harga pada level **6.000** kemudian 6.100 dengan support di level 5.800, cut loss jika break 5.700.

BMRI (5.900)



PT Astra Internasional, Tbk

Rekomendasi: Buy on Weakness

---Harga ditutup membentuk pola black opening marubozu yang merupakan sinyal bearish continuation namun masih tertahan EMA50, stochastic memasuki zona netral dan MACD histogram convergence positif. **Target** harga beli pada level **5.025** dengan *resist* di level 5.225 kemudian 5.350.

ASII (5.100)



Technical Corner

23 August 2021

PT Mitra Adiperkasa, Tbk

Rekomendasi: Buy on Weakness

---Harga ditutup membentuk pola doji yang merupakan sinyal indecision, stochastic netral dan MACD histogram convergence positif. **Target** harga beli pada level **665** dengan *resist* di level 690 kemudian 710.

MAPI (675)



Premier ETF Indonesia Consumer

Rekomendasi: Buy

---Harga ditutup di atas EMA5 dan membentuk pola long white marubozu yang merupakan sinyal bullish continuation, stochastic netral dan MACD histogram divergence positif. **Target** kenaikan harga pada level **891** kemudian 899 dengan support di level 875, cut loss jika break 867.

XIIC (883)



Technical Corner

23 August 2021

Premier ETF Indonesia SOC

Rekomendasi: Buy

---Harga ditutup membentuk pola long white marubozu yang merupakan sinyal bullish continuation, stochastic netral dan MACD bearish crossover. **Target** kenaikan harga pada level **639** kemudian 646 dengan support di level 625, cut loss jika break 618.

XISC (632)



XISI (311)

Premier ETF SMinfra18

Rekomendasi: Buy

---Harga ditutup di atas EMA5,10 dan membentuk pola long white marubozu yang merupakan sinyal bullish continuation, stochastic netral dan MACD histogram divergence positif. **Target** kenaikan harga pada level **316** kemudian 321 dengan support di level 306, cut loss jika break 301.



Technical Corner

23 August 2021

PT INDO PREMIER SEKURITAS

Pacific Century Place 16th Floor SCBD Lot 10
Jl. Jend. Sudirman Kav. 52-53
Jakarta Selatan 12190 - Indonesia
p +62 21 5088 7200

ANALYSTS CERTIFICATION

The views expressed in this research report accurately reflect the analyst's personal views about any and all of the subject securities or issuers; and no part of the research analyst's compensation was, is, or will be, directly or indirectly, related to the specific recommendations or views expressed in the report.

DISCLAIMERS

This research is based on information obtained from sources believed to be reliable, but we do not make any representation or warranty nor accept any responsibility or liability as to its accuracy, completeness or correctness. Opinions expressed are subject to change without notice. This document is prepared for general circulation. Any recommendations contained in this document does not have regard to the specific investment objectives, financial situation and the particular needs of any specific addressee. This document is not and should not be construed as an offer or a solicitation of an offer to purchase or subscribe or sell any securities. PT. Indo Premier Sekuritas or its affiliates may seek or will seek investment banking or other business relationships with the companies in this report.

Refer to Important disclosures on the last of this report