

Technical Corner

13 August 2021

IHSG

Range: 6.100 – 6.180

---Indeks ditutup di atas EMA5,10 dan membentuk pola white closing marubozu yang merupakan sinyal bullish continuation, stochastic netral dan MACD bearish crossover. **Target** kenaikan indeks pada level **6.180** dan 6.220 dengan *support* di level 6.100 kemudian 6.060.

IHSG (6.140)



PT Erajaya Swasembada, Tbk

Rekomendasi: Buy

---Harga ditutup di atas EMA5,10 dan membentuk pola long white marubozu yang merupakan sinyal bullish continuation, stochastic netral dan MACD histogram divergence positif. **Target** kenaikan harga pada level **665** kemudian 675 dengan *support* di level 645, *cut loss* jika break 635.

ERAA (655)



Technical Corner

13 August 2021

PT XL Axiata, Tbk

Rekomendasi: Buy

---Harga ditutup di atas EMA5,10 dan membentuk pola long white marubozu yang merupakan sinyal bullish continuation, stochastic netral dan MACD histogram divergence positif. **Target** kenaikan harga pada level **2.650** kemudian 2.690 dengan *support* di level 2.570, *cut loss* jika break 2.530.

EXCL (2.610)



PT BPD Jawa Barat dan Banten, Tbk

Rekomendasi: Buy

---Harga ditutup di atas EMA5,10 dan membentuk pola small bullish candle, stochastic netral dan MACD histogram divergence positif. **Target** kenaikan harga pada level **1.275** kemudian 1.295 dengan *support* di level 1.235, *cut loss* jika break 1.215.

BJBR (1.255)



Technical Corner

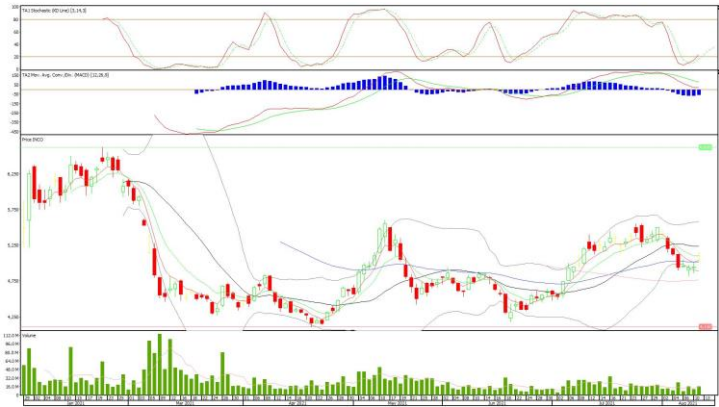
13 August 2021

PT Vale Indonesia, Tbk

Rekomendasi: Buy

---Harga ditutup di atas EMA5,10 dan membentuk pola doji yang merupakan sinyal indecision, stochastic memasuki zona netral dan MACD histogram convergence negatif. **Target** kenaikan harga pada level **5.200** kemudian 5.300 dengan *support* di level 5.000, *cut loss* jika break 4.900.

INCO (5.100)



Premier ETF FTSE Indonesia ESG

Rekomendasi: Buy

---Harga ditutup di atas EMA5,10 dan membentuk pola white closing marubozu yang merupakan sinyal bullish continuation, stochastic netral dan MACD histogram divergence positif. **Target** kenaikan harga pada level **92** kemudian 93 dengan *support* di level 90, *cut loss* jika break 89.

XIFE (91)



Technical Corner

13 August 2021

Cipta ETF Index LQ45

Rekomendasi: Buy

---Harga ditutup di atas EMA5,10 dan membentuk pola white marubozu yang merupakan sinyal bullish continuation, stochastic netral dan MACD histogram divergence positif. **Target** kenaikan harga pada level **89** kemudian 90 dengan *support* di level 87, *cut loss* jika break 86.

XCLQ (88)



Pinnacle Core High Dividend ETF

Rekomendasi: Buy

---Harga ditutup di atas EMA5,10 dan membentuk pola white marubozu yang merupakan sinyal bullish continuation, stochastic golden cross dan MACD histogram divergence positif. **Target** kenaikan harga pada level **417** kemudian 426 dengan *support* di level 399, *cut loss* jika break 390.

XPDV (408)



Technical Corner

13 August 2021

PT INDO PREMIER SEKURITAS

Pacific Century Place 16th Floor SCBD Lot 10
Jl. Jend. Sudirman Kav. 52-53
Jakarta Selatan 12190 - Indonesia
p +62 21 5088 7200

ANALYSTS CERTIFICATION

The views expressed in this research report accurately reflect the analyst's personal views about any and all of the subject securities or issuers; and no part of the research analyst's compensation was, is, or will be, directly or indirectly, related to the specific recommendations or views expressed in the report.

DISCLAIMERS

This research is based on information obtained from sources believed to be reliable, but we do not make any representation or warranty nor accept any responsibility or liability as to its accuracy, completeness or correctness. Opinions expressed are subject to change without notice. This document is prepared for general circulation. Any recommendations contained in this document does not have regard to the specific investment objectives, financial situation and the particular needs of any specific addressee. This document is not and should not be construed as an offer or a solicitation of an offer to purchase or subscribe or sell any securities. PT. Indo Premier Sekuritas or its affiliates may seek or will seek investment banking or other business relationships with the companies in this report.

Refer to Important disclosures on the last of this report