

Technical Corner

19 July 2021

IHSG

Range: 6.035 – 6.115

---Indeks ditutup di atas EMA5,10 dan membentuk pola small bullish candle, stochastic golden cross dan MACD bullish crossover. **Target** kenaikan indeks pada level **6.115** dan 6.155 dengan *support* di level 6.035 dan 5.995.

IHSG (6.073)



PT Ciputra Development, Tbk

Rekomendasi: Buy

---Harga ditutup di atas EMA5,10 dan membentuk pola white opening marubozu yang merupakan sinyal bullish continuation, stochastic golden cross dan MACD histogram divergence positif. **Target** kenaikan harga pada level **960** kemudian 980 dengan *support* di level 920, *cut loss* jika break 900.

CTRA (940)



Technical Corner

19 July 2021

PT PP London Sumatra Indonesia, Tbk

Rekomendasi: Buy

---Harga ditutup di atas EMA5,10 dan membentuk pola white opening marubozu yang merupakan sinyal bullish continuation, stochastic netral dan MACD histogram divergence positif. **Target** kenaikan harga pada level **1.125** kemudian 1.145 dengan *support* di level 1.085, *cut loss* jika break 1.065.

LSIP (1.105)



PT Timah, Tbk

Rekomendasi: Buy

---Harga ditutup di atas EMA5,10 dan membentuk pola long white marubozu yang merupakan sinyal bullish continuation, stochastic memasuki zona overbought dan MACD histogram divergence positif. **Target** kenaikan harga pada level **1.720** kemudian 1.745 dengan *support* di level 1.670, *cut loss* jika break 1.645.

TINS (1.695)



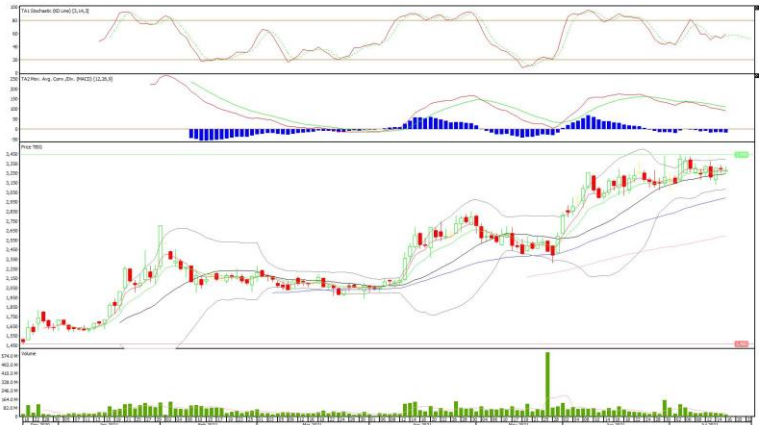
Technical Corner

19 July 2021

PT Tower Bersama Infrastructure, Tbk Rekomendasi: Buy on Weakness

---Harga ditutup membentuk pola doji yang merupakan sinyal indecision namun tertahan MA20, stochastic netral dan MACD histogram divergence negatif. **Target** harga beli pada level **3.240** dengan *resist* di level 3.330 kemudian 3.380.

TBIG (3.280)



Batavia Smart Liquid ETF Rekomendasi: Buy

---Harga ditutup di atas EMA5,10 dan membentuk pola white marubozu yang merupakan sinyal bullish continuation, stochastic netral dan MACD histogram divergence positif. **Target** kenaikan harga pada level **434** kemudian 438 dengan *support* di level 426, *cut loss* jika break 422.

XBLQ (430)



Technical Corner

19 July 2021

Premier ETF Indonesia SOC

Rekomendasi: Buy

---Harga ditutup di atas EMA5,10 dan membentuk pola white opening marubozu yang merupakan sinyal bullish continuation, stochastic netral dan MACD histogram divergence positif. **Target** kenaikan harga pada level **643** kemudian 650 dengan *support* di level 629, *cut loss* jika break 622.

XISC (636)



XMTS (411)



ETF MNC36 Likuid

Rekomendasi: Buy

---Harga ditutup di atas EMA5,10 dan membentuk pola white marubozu yang merupakan sinyal bullish continuation, stochastic golden cross dan MACD histogram divergence positif. **Target** kenaikan harga pada level **416** kemudian 421 dengan *support* di level 406, *cut loss* jika break 401.

Technical Corner

19 July 2021

PT INDO PREMIER SEKURITAS

Pacific Century Place 16th Floor SCBD Lot 10
Jl. Jend. Sudirman Kav. 52-53
Jakarta Selatan 12190 - Indonesia
p +62 21 5088 7200

ANALYSTS CERTIFICATION

The views expressed in this research report accurately reflect the analyst's personal views about any and all of the subject securities or issuers; and no part of the research analyst's compensation was, is, or will be, directly or indirectly, related to the specific recommendations or views expressed in the report.

DISCLAIMERS

This research is based on information obtained from sources believed to be reliable, but we do not make any representation or warranty nor accept any responsibility or liability as to its accuracy, completeness or correctness. Opinions expressed are subject to change without notice. This document is prepared for general circulation. Any recommendations contained in this document does not have regard to the specific investment objectives, financial situation and the particular needs of any specific addressee. This document is not and should not be construed as an offer or a solicitation of an offer to purchase or subscribe or sell any securities. PT. Indo Premier Sekuritas or its affiliates may seek or will seek investment banking or other business relationships with the companies in this report.

Refer to Important disclosures on the last of this report